



Site Map Legend

- 60' Wide Homesite
- 50' Wide Homesite



WHY NOT START FRESH?



Pasadena Landing 50s Included Features

Interior Features

- Decorative 3 1/4" colonial baseboards
- Decorative 2 1/4" colonial door casing
- LVP flooring on first floor living areas
- Ball knob door hardware in satin nickel
- Two-panel square top style doors
- Maintenance-free, ventilated shelving throughout
- Smoke and carbon monoxide detectors wired to electrical system with battery back-up
- Cat6 data outlet in Living Room
- Structured media enclosure, location varies per plan
- Ceiling fan pre-wire, switched in Living Room, Recreation Room (per plan), Lanai (per plan) and all Bedrooms
- Recessed LED flush mount light fixtures
- Decora lighting switches
- Carpets with 7/16" 5.5lbs foam pad
- Interior washer and dryer hook-up with vent to the exterior
- Spacious linen closets (per plan)

Exterior Features

- Attractive and architecturally authentic elevations with textured stucco and fiber cement siding exteriors
- Satin nickel exterior front door hardware with deadbolt
- Insulated two panel fiberglass 6' 8" front and rear door (per plan)
- High quality acrylic exterior paint
- Raised panel reinforced decorative garage doors
- Smart garage door opener with remote
- Dual pane, Low-E energy efficient vinyl windows, and sliding glass door (per plan)
- Professionally designed landscape packages
- Water-conserving irrigation systems
- Weather resistant acrylic paint on front porch and rear patio (per plan)
- Exterior hose bibb at garage and rear of home
- Exterior covered lanai

Kitchen Features

- Quartz countertops (per Interior Design selection)
- Spacious island workspace (per plan)
- Island seating area (per plan)
- LVP flooring in Kitchen
- Designer recessed panel cabinets, with hardware and 36" upper cabinets
- Premium stainless-steel undermount sink, 9-5/16" deep
- Moen single handle with pullout spray faucet
- Stainless steel, glass top range
- Stainless steel microwave, exterior vented
- High-efficiency Energy Star stainless-steel dishwasher
- Garbage disposal
- Oversized, walk-in pantry with 5 rows of shelving (per plan)
- Recessed LED flush mount light fixtures

Energy Saving Features

- High efficiency air conditioning system
- Energy efficient range and heating system
- Smart thermostat with app capabilities
- LED flush mount light fixtures
- Energy efficient LED lightbulbs
- R-4.1 insulated block walls
- R-13 insulation in exterior framed walls
- R-30 batt/blown ceiling insulation over conditioned space
- 50 gallon energy efficient water heater

Construction & Customer Care

- One-year non-transferable performance guarantee (subject to normal wear and tear)
- 10-year structural warranty
- Up to five scheduled meetings with your Casa Fresca Construction Manager to learn about your new home
- First floor concrete block construction with poured, reinforced concrete cells
- Low-maintenance soffit and fascia
- Engineered hurricane structural hardware
- BoraCare termite treatment
- Taexx built-in "tubes in the wall" pest control system
- Quality Assurance Inspections performed by an experienced construction staff member at various stages of the construction process

Bathroom Features

- LVP flooring
- Quartz countertops with undermounted sinks
- Mirrors and recessed LED flush mount light fixtures
- Single handle faucets in chrome finish
- Pedestal sink (per plan)
- Elongated commodes
- Shower pan and/or tub with wall tile surrounds
- Designer recessed panels cabinet with hardware

Pasadena Landing 60s Included Features

Interior Features

- Decorative 5 ¼" colonial baseboards
- Decorative 2 ¼" colonial door casing
- Shaw LVP flooring on first floor living areas
- Lever door hardware in chrome
- Two-panel square top style doors
- Maintenance-free, ventilated shelving throughout
- Smoke and carbon monoxide detectors wired to electrical system with battery back-up
- Cat6 data outlet in Living Room
- Structured media enclosure, location varies per plan
- Ceiling fan pre-wire, switched in Living Room, Recreation Room (per plan), and all Bedrooms
- Recessed LED flush mount light fixtures
- Decora lighting switches
- Carpets with 7/16" 5.5lbs foam pad
- Interior washer and dryer with vent to the exterior
- Spacious linen closets (per plan)

Exterior Features

- Attractive and architecturally authentic elevations with textured stucco and fiber cement siding systems
- Chrome exterior front door hardware with handleset and deadbolt
- Insulated 2 square panel 8' fiberglass front door
- High quality acrylic exterior paint
- Raised panel reinforced decorative garage doors
- Smart garage door opener with remote
- Dual pane, Low-E energy efficient vinyl windows, and sliding glass door (per plan)
- Professionally designed landscape packages
- One cast aluminum construction black outdoor wall lantern
- Water-conserving irrigation systems
- Weather resistant acrylic paint on front porch and rear patio (per plan)
- Private, 2-car or 3-car garage (per plan) with paver driveway
- Exterior hose bibb at garage and rear of home
- Exterior covered lanai

Gourmet Kitchen Features

- 2cm quartz countertops (per Interior Design selection)
- Spacious island workspace (per plan)
- Island seating area (per plan)
- Pull out trash drawer
- LVP flooring in Kitchen
- Designer recessed panel soft-closing cabinets, with hidden hinges and hardware with 42" upper cabinets and crown molding
- Premium 18-gauge, undermount, single bowl stainless-steel sink, 9-5/16" deep
- Single handle with pullout spray faucet in chrome finish
- Electric cooktop with 30" range hood, exterior vented
- Stainless steel appliances featuring a wall-mounted single oven with Air Fry technology and a separate microwave
- High-efficiency Energy Star stainless-steel dishwasher
- 1/3 hp garbage disposal
- Oversized, walk-in pantry with 5 rows of shelving (per plan)
- Recessed LED flush mount light fixtures

Energy Saving Features

- High efficiency air conditioning system with SEER2 ratings that meets or exceeds current building codes
- Energy efficient range and heating system
- Smart thermostat with app capabilities
- LED flush mount light fixtures
- Energy efficient LED lightbulbs
- R-4.1 insulated block walls
- R-13 insulation in exterior framed walls
- R-30 batt/blown ceiling insulation over conditioned space
- Insulated AC ductwork hard-sealed with mastic
- Energy efficient water heater
- Air infiltration barrier between framing and drywall

Construction & Customer Care

- One-year non-transferable performance guarantee (subject to normal wear and tear)
- 10-year structural warranty
- Up to five scheduled meetings with your Casa Fresca Construction Manager to learn about your new home
- First floor concrete block construction with poured, reinforced concrete cells
- Low-maintenance soffit and fascia
- Engineered hurricane structural hardware
- BoraCare termite treatment
- Taexx built-in "tubes in the wall" pest control system
- Quality Assurance Inspections performed by an experienced construction staff member at various stages of the construction process

Bathroom Features

- Spacious walk-in closets (per plan)
- LVP flooring
- 2.0 cm quartz countertops
- Mirrors with recessed LED flush mount bulbs
- Single handle faucets in chrome finish
- Rectangular undermount sinks
- Elongated commodes
- Tile shower surrounds with tile shower floors
- Frameless shower enclosures (Owner's Suite bathroom only)
- Freestanding roman tub (per plan)
- Designer recessed panels cabinet with hardware and hidden hinges

Catalina

5 bed • 3 bath • 2 car | 2,892 sq. ft.

CASA *Fresca*
HOMES®

WHY NOT START FRESH?



Catalina A



Catalina B



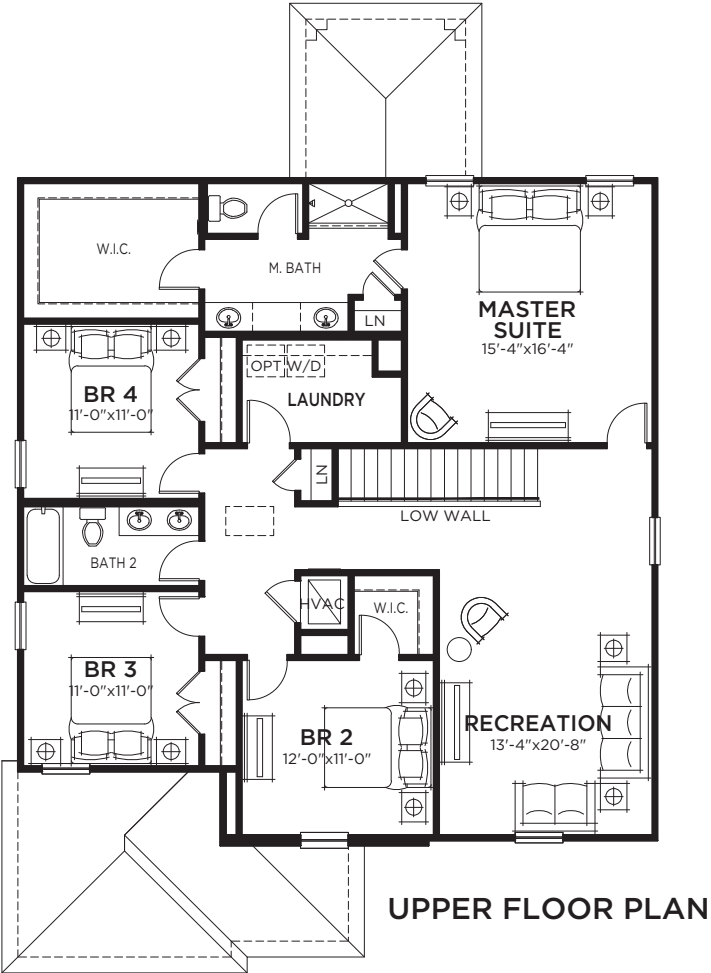
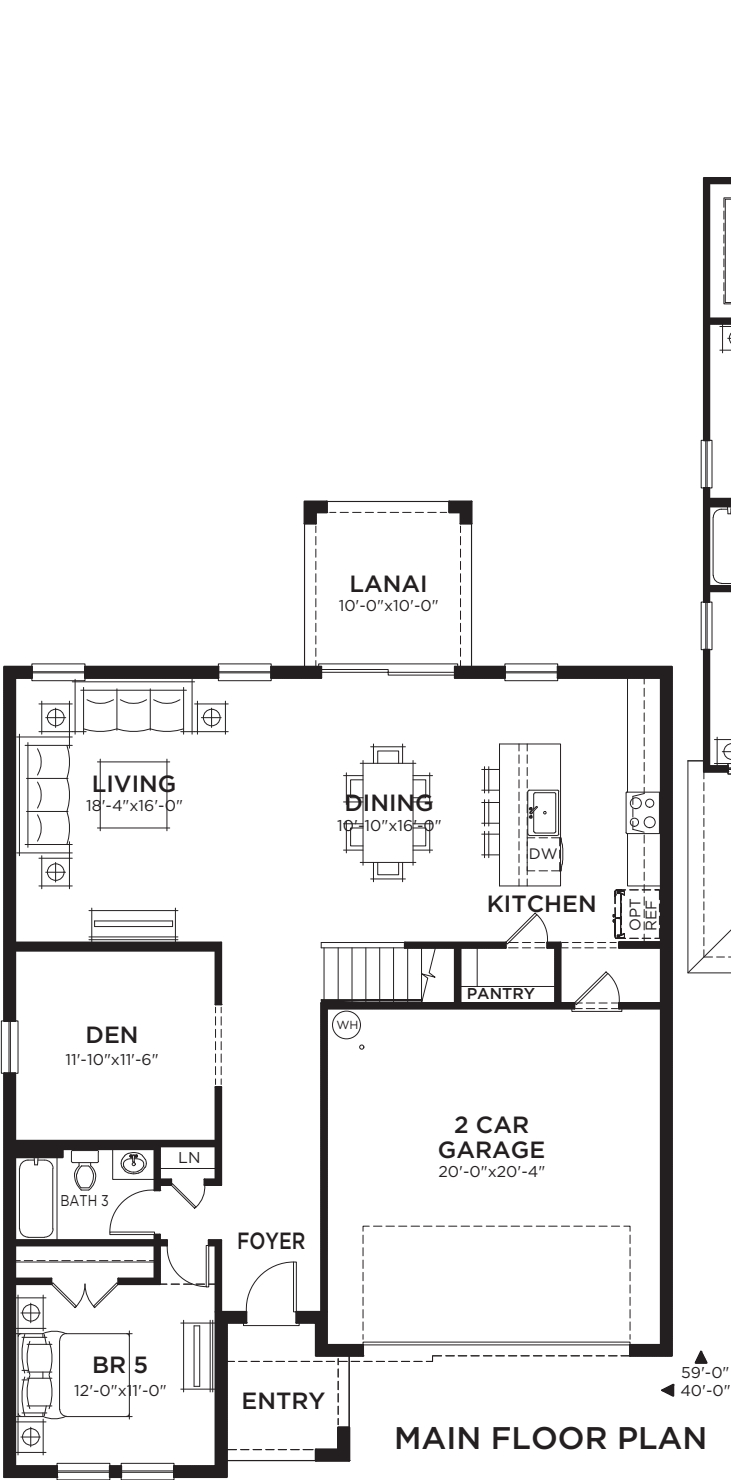
Catalina D

Catalina

5 bed • 3 bath • loft • 2 car | 2,892 sq. ft.



WHY NOT START FRESH?



Area Schedule

Main Floor A/C	1318 SF
Upper Floor A/C	1574 SF
Total A/C	2892 SF
2 Car Garage	435 SF
Entry	57 SF
Lanai	100 SF
Total Area	3484 SF

Artist's conceptual rendering. Actual construction may vary in color, features, and dimensions. Availability, specifications, and pricing are subject to change without notice. All plans require developer approval and may be modified in order to comply with these developer requirements. Please speak with a Casa Fresca Sales Consultant for current information and about options where applicable. © 2025 Casa Fresca-Cool Homes, LLC. All Rights Reserved. Not an offer to purchase where prohibited by law. Broker Participation Welcome. CRC#1331762



Dalia

with Gourmet Kitchen

4 bed • 2 bath • 3 car | 2,212 sq. ft.

CASA *Fresca*
HOMES®

WHY NOT START FRESH?



Dalia A



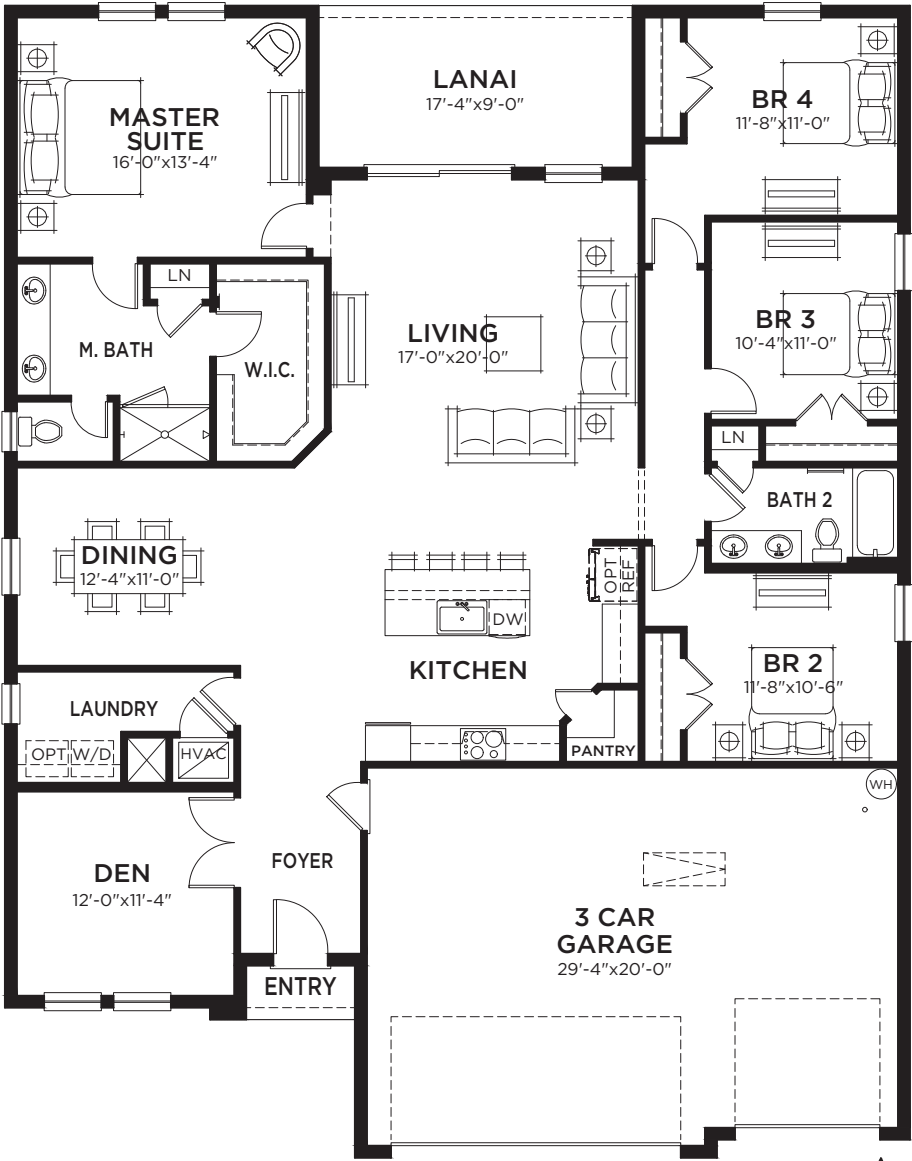
Dalia B

Dalia

with Gourmet Kitchen

4 bed • 2 bath • 3 car | 2,212 sq. ft.

WHY NOT START FRESH?



MAIN FLOOR PLAN

Living A/C	2212 SF
Total A/C	2212 SF
3 Car Garage	646 SF
Entry	19 SF
Lanai	156 SF
Total Area	3033 SF

Esperanza

Multi-Gen Floor Plan

4 bed • 3 bath • 2 car | 2,292 sq. ft.

CASA *Fresca*
HOMES®

WHY NOT START FRESH?



Esperanza A



Esperanza B



Esperanza C

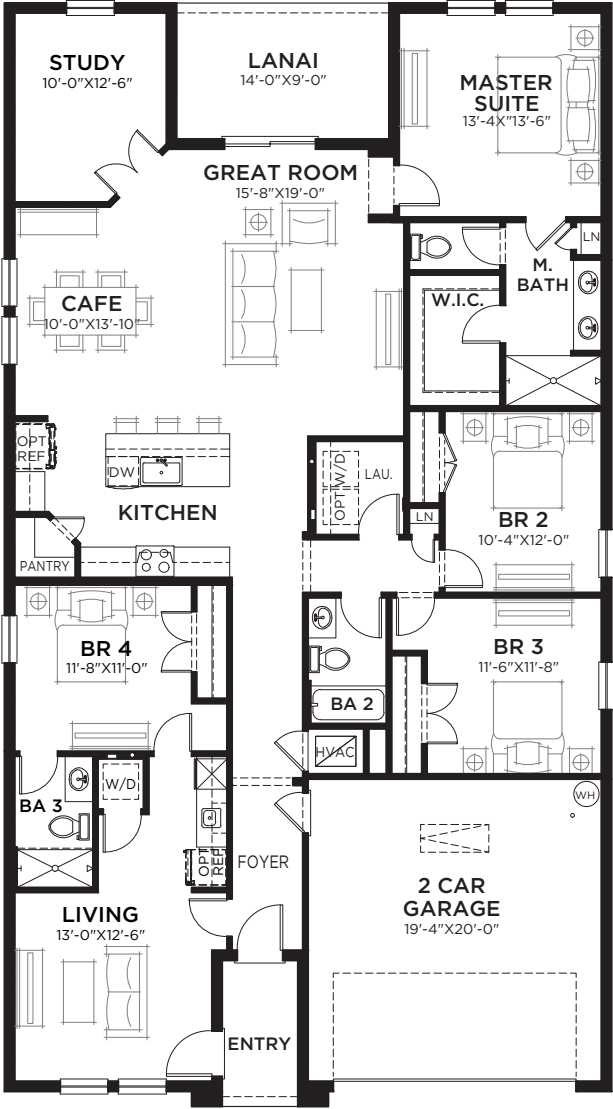
Esperanza

Multi-Gen Floor Plan

4 bed • 3 bath • 2 car | 2,292 sq. ft.



WHY NOT START FRESH?



73'-0"
40'-0"

Area Schedule

Main Floor A/C	2292 SF
Garage	419 SF
Lanai	126 SF
Entry	52 SF
Total Area	2889 SF

Artist's conceptual rendering. Actual construction may vary in color, features, and dimensions. Availability, specifications, and pricing are subject to change without notice. All plans require developer approval and may be modified in order to comply with these developer requirements. Please speak with a Casa Fresca Sales Consultant for current information and about options where applicable. © 2025 Casa Fresca-Cool Homes, LLC. All Rights Reserved. Not an offer to purchase where prohibited by law. Broker Participation Welcome. CRC#1331762



Gabriela

5 bed • 3.5 bath • 3 car | 3,182 sq. ft.

CASA *Fresca*
HOMES®

WHY NOT START FRESH?



Gabriela A



Gabriela B



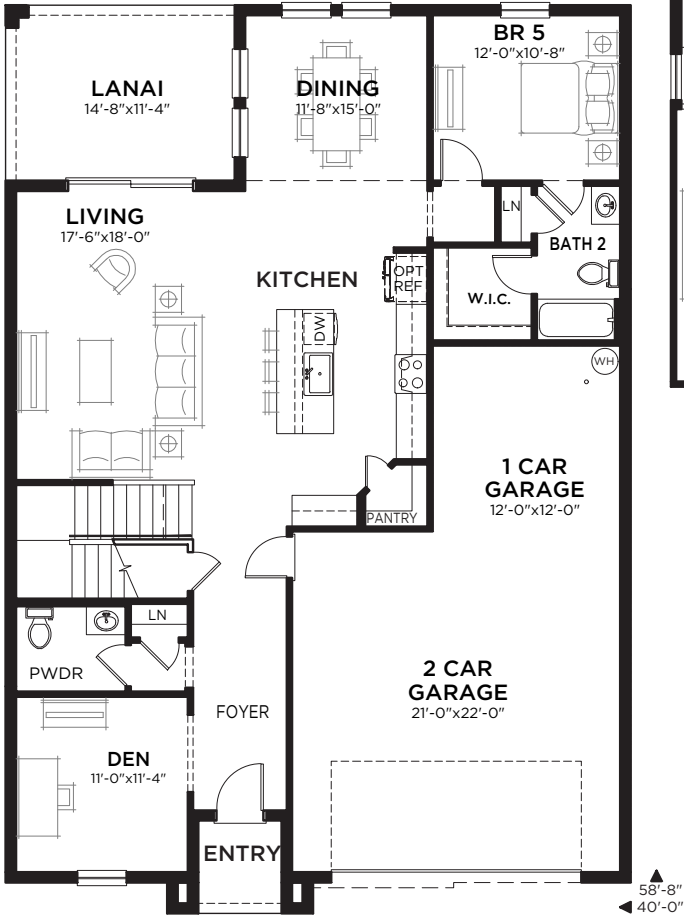
Gabriela C

Gabriela

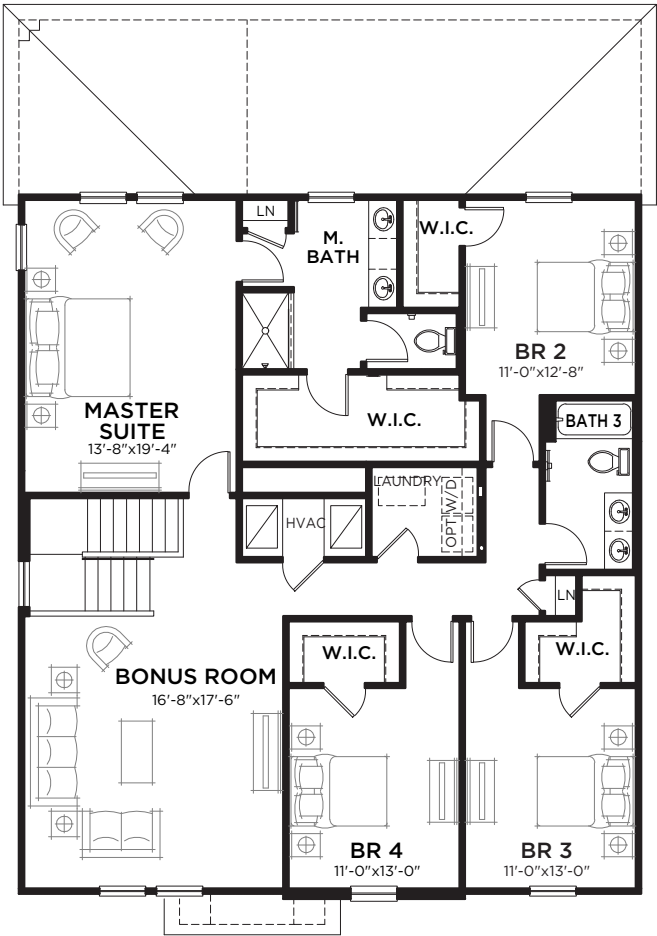
5 bed • 3.5 bath • loft • 3 car | 3,182 sq. ft.



WHY NOT START FRESH?



MAIN FLOOR PLAN



UPPER FLOOR PLAN

Main Floor A/C	1433 SF
Upper Floor A/C	1749 SF
Total A/C	3182 SF
3 Car Garage	646 SF
Entry	40 SF
Lanai	166 SF
Total Area	4034 SF

Artist's conceptual rendering. Actual construction may vary in color, features, and dimensions. Availability, specifications, and pricing are subject to change without notice. All plans require developer approval and may be modified in order to comply with these developer requirements. Please speak with a Casa Fresca Sales Consultant for current information and about options where applicable. © 2025 Casa Fresca-Cool Homes, LLC. All Rights Reserved. Not an offer to purchase where prohibited by law. Broker Participation Welcome. CRC#1331762



Jazmin

5 bed • 3 bath • 3 car | 2,452 sq. ft.

CASA *Fresca*
HOMES®

WHY NOT START FRESH?



Jazmin A



Jazmin B



Jazmin C

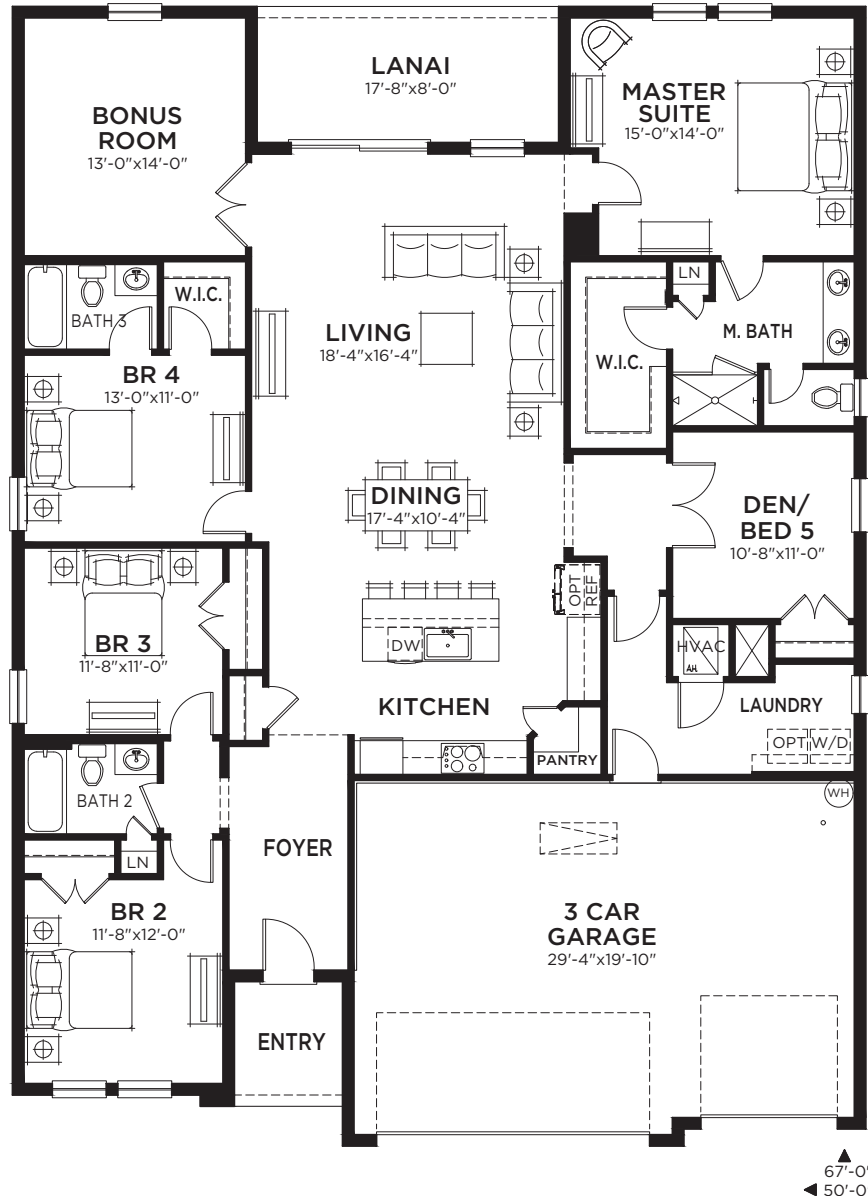
Jazmin

with Gourmet Kitchen

5 bed • 3 bath • bonus room • 3 car | 2,452 sq. ft.

CASA *Fresca*
HOMES®

WHY NOT START FRESH?



Living A/C	2457 SF
Total A/C	2457 SF
3 Car Garage	641 SF
Entry	48 SF
Lanai	141 SF
Total Area	3287 SF

Artist's conceptual rendering. Actual construction may vary in color, features, and dimensions. Availability, specifications, and pricing are subject to change without notice. All plans require developer approval and may be modified in order to comply with these developer requirements. Please speak with a Casa Fresca Sales Consultant for current information and about options where applicable. © 2025 Casa Fresca-Cool Homes, LLC. All Rights Reserved. Not an offer to purchase where prohibited by law. Broker Participation Welcome. CRC#1331762

hello@casafrescahomes.com
CasaFrescaHomes.com



Lucia

5 bed • 3 bath • 2 car | 2,420 sq. ft.

CASA *Fresca*
HOMES®

WHY NOT START FRESH?



Lucia A



Lucia B



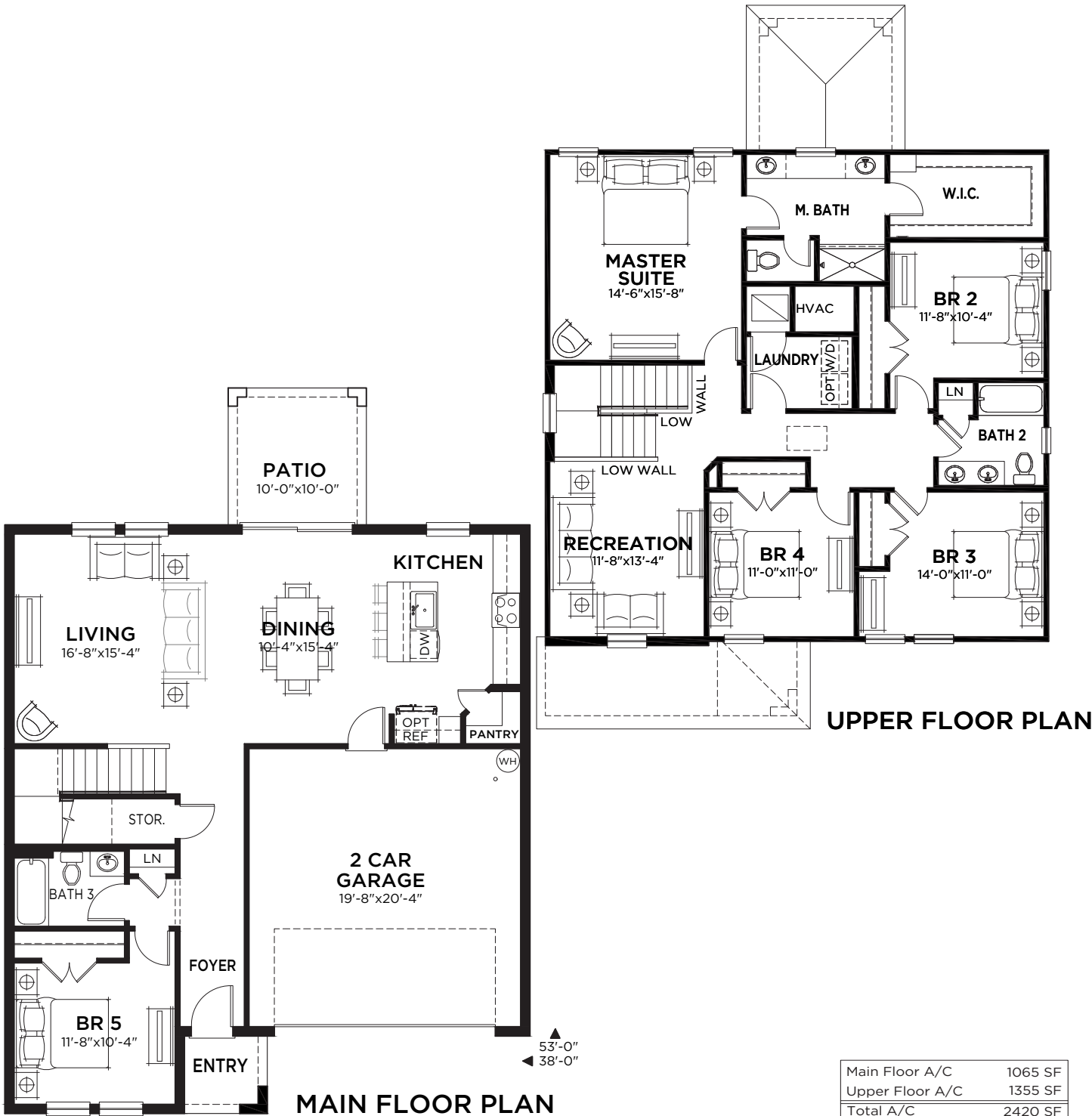
Lucia C

Lucia

5 bed • 3 bath • loft • 2 car | 2,420 sq. ft.



WHY NOT START FRESH?



Main Floor A/C	1065 SF
Upper Floor A/C	1355 SF
Total A/C	2420 SF
2 Car Garage	427 SF
Entry	34 SF
Lanai	100 SF
Total Area	2981 SF



Valeria

4 bed • 2 bath • 2 car | 1,850 sq. ft.

CASA *Fresca*
HOMES®

WHY NOT START FRESH?



Valeria A



Valeria B



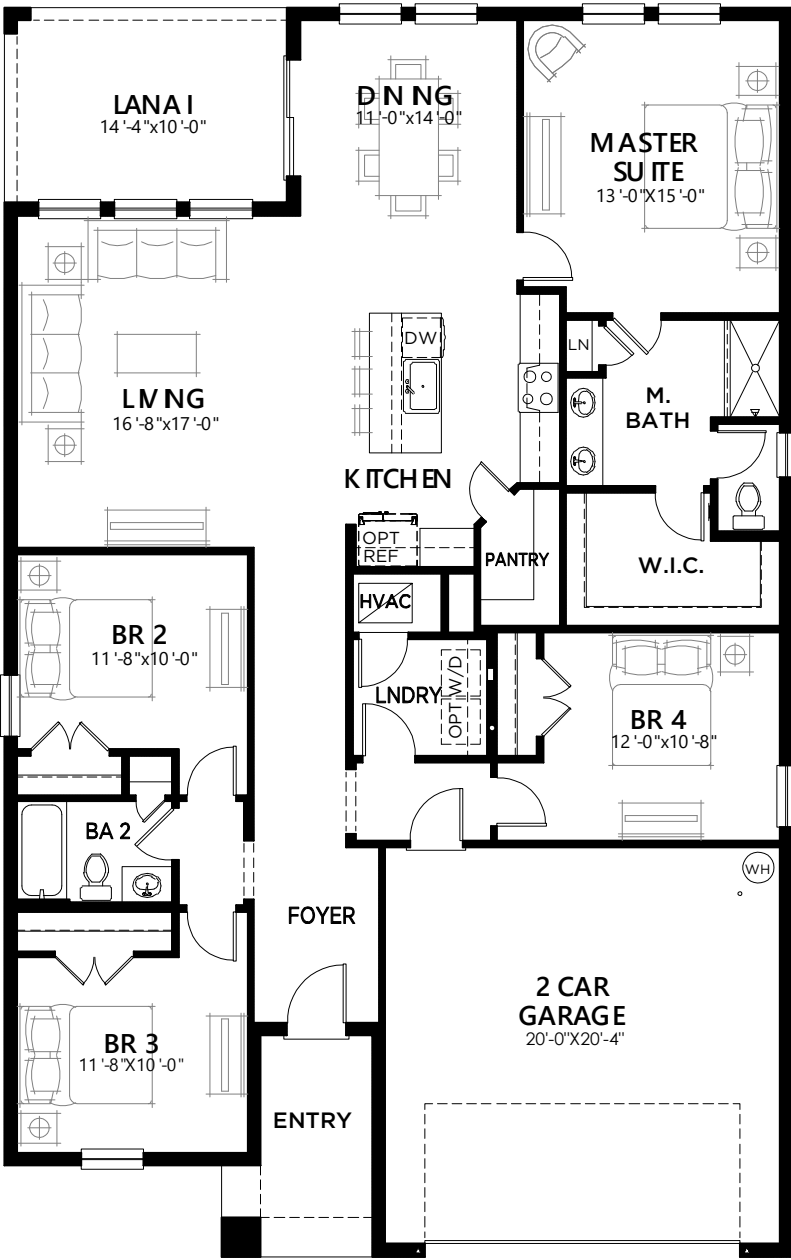
Valeria C

Valeria

4 bed • 2 bath • 2 car | 1,850 sq. ft.



WHY NOT START FRESH?



MAIN FLOOR PLAN

64'-0"
40'-0"

Area Schedule

Main Floor A/C	1850 SF
Garage	442 SF
Lana i	143 SF
Entry	74 SF
Total Area	2509 SF

Artist's conceptual rendering. Actual construction may vary in color, features, and dimensions. Availability, specifications, and pricing are subject to change without notice. All plans require developer approval and may be modified in order to comply with these developer requirements. Please speak with a Casa Fresca Sales Consultant for current information and about options where applicable. © 2026 Casa Fresca-Cool Homes, LLC. All Rights Reserved. Not an offer to purchase where prohibited by law. Broker Participation Welcome. CRC#1331762



Violeta

with Gourmet Kitchen

5 bed • 3 bath • loft • 3 car | 3,288 sq. ft.

CASA *Fresca*
HOMES®

WHY NOT START FRESH?



Violeta A



Violeta B

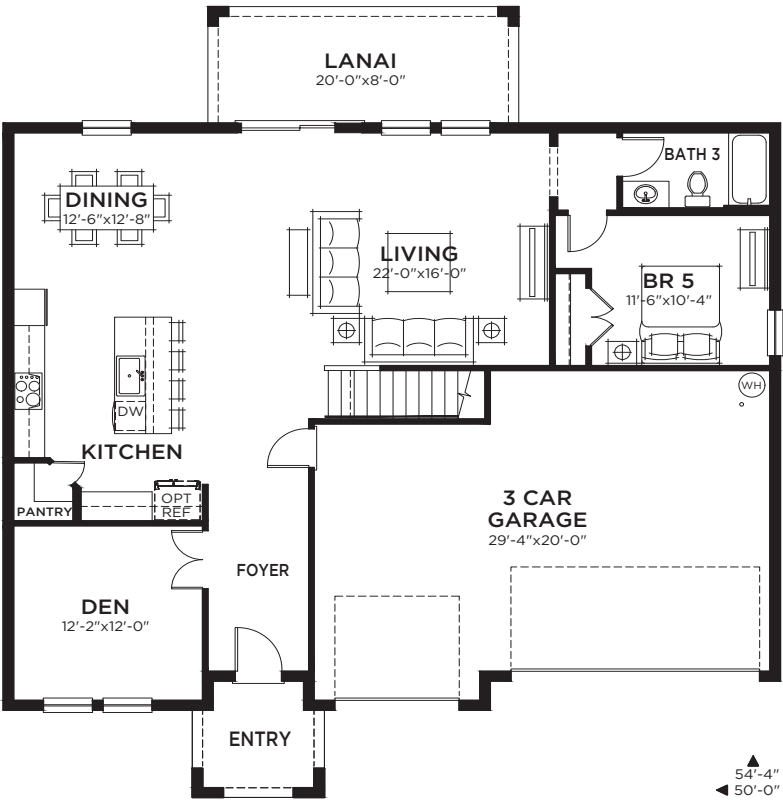
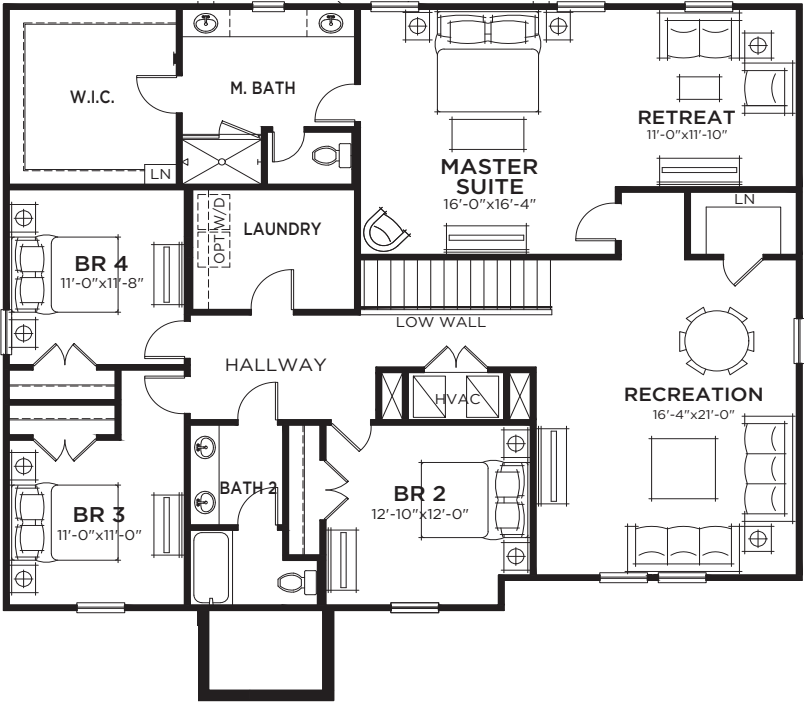
Violeta

with Gourmet Kitchen

5 bed • 3 bath • loft • 3 car | 3,288 sq. ft.



WHY NOT START FRESH?



Main Floor A/C	1345 SF
Upper Floor A/C	1943 SF
Total A/C	3288 SF
3 Car Garage	622 SF
Entry	63 SF
Lanai	160 SF
Total Area	4133 SF

Artist's conceptual rendering. Actual construction may vary in color, features, and dimensions. Availability, specifications, and pricing are subject to change without notice. All plans require developer approval and may be modified in order to comply with these developer requirements. Please speak with a Casa Fresca Sales Consultant for current information and about options where applicable. © 2025 Casa Fresca-Cool Homes, LLC. All Rights Reserved. Not an offer to purchase where prohibited by law. Broker Participation Welcome. CRC#1331762

