

Cherrywood Preserve

Preliminary Site Map



Site Map Legend

- 60' Wide Homesite
- 45' Wide Homesite
- * Model Home
- P Model Parking

CASA Fresca
HOMES.

WHY NOT START FRESH?



Bold Included Features

WHY NOT START FRESH?

Interior Features

- Decorative 5 ¼" colonial baseboards
- Decorative 2 ¼" colonial door casing
- Shaw LVP flooring on first floor living areas
- Lever door hardware in brushed nickel
- Two square panel, smooth colonist doors
- Maintenance-free, ventilated shelving throughout
- Smoke and carbon monoxide detectors wired to electrical system with battery back-up
- Cat6 data outlet in Master Suite and Living Room
- Structured media enclosure in Master Suite closet
- Ceiling fan pre-wire, switched in Living Room, Recreation Room (per plan), and all Bedrooms
- Recessed LED flush mount light fixtures
- Decora lighting switches
- Carpets with 7/16" 5.5lbs foam pad
- Interior washer and dryer with vent to the exterior

Kitchen Features

- 2cm quartz countertops (per Interior Design selection)
- Spacious island workspace (per plan)
- Island seating area (per plan)
- Pull out Trash Drawer in Kitchen Island.
- LVP flooring in Kitchen
- Designer recessed panel cabinets, with hidden hinges and hardware with 42" upper cabinets and crown molding
- Premium 18-gauge, undermount, single bowl stainless-steel sink, 9-5/16" deep
- Single handle with pullout spray faucet in brush nickel finish
- Self-cleaning stainless-steel slide-in electric range
- Recirculating stainless-steel microwave
- High-efficiency Energy Star stainless-steel dishwasher
- 1/3 hp garbage disposal
- Oversized, walk-in pantry with 5 rows of shelving (per plan)
- Recessed LED flush mount light fixtures

Bathroom Features

- Spacious walk-in closets (per plan)
- LVP flooring
- 2.0 cm quartz countertops
- Mirrors with vanity lighting w/ recessed LED flush mount bulbs
- Single handle faucets in brush nickel finish
- Rectangular undermount sinks
- Elongated commodes
- Semi-frameless
- Ceiling height tile shower surrounds with tile shower floors
- Semi-frameless shower enclosures (not included with tubs)
- Freestanding roman tub (per plan)
- Designer recessed panels cabinet with hardware and hidden hinges
- Spacious linen closets (per plan)

Exterior Features

- Attractive and architecturally authentic elevations with textured stucco and fiber cement siding systems
- Stylish exterior front door hardware with handleset and smart lock.
- Insulated 2 Square panel fiberglass 8' 0" front door and 8'0" sliding glass rear door (per plan)
- High quality acrylic exterior paint
- Raised panel reinforced decorative garage doors
- Automatic garage door opener with 2 remotes
- Low-E, insulated, argon-filled sliding glass doors (per plan)
- Professionally designed landscape packages
- One cast aluminum construction black outdoor wall lantern.
- Water-conserving irrigation systems
- Weather resistant acrylic paint on front porch and rear patio (per plan)
- Private, 2-car or 3-car garage (per plan)
- Exterior hose bibb at garage and rear of home

Energy Saving Features

- High efficiency air conditioning system with SEER2 ratings that meets or exceeds current building codes
- Energy efficient range and heating system
- Smart thermostat with voice control
- LED flush mount light fixtures
- Energy efficient LED lightbulbs
- R-4.1 insulated block walls
- R-13 insulation in exterior framed walls
- R-30 batt/blown ceiling insulation over conditioned space
- Insulated AC ductwork hard-sealed with mastic
- Energy efficient water heater
- Air infiltration barrier between framing and drywall

Construction & Customer Care

- One-year non-transferable performance guarantee (subject to normal wear and tear)
- Four scheduled meetings with your Casa Fresca Construction Manager to learn about your new home
- First floor concrete block construction with poured, reinforced concrete cells
- Low-maintenance soffit and fascia
- 150 or 200 amp electrical service (per plan)
- BoraCare termite treatment
- Taexx built-in "tubes in the wall" pest control system

Foxtail

2 bed • 2 bath • 2 car | 1,451 sq. ft.

CASA *Fresca*
HOMES®

WHY NOT START FRESH?



Foxtail M

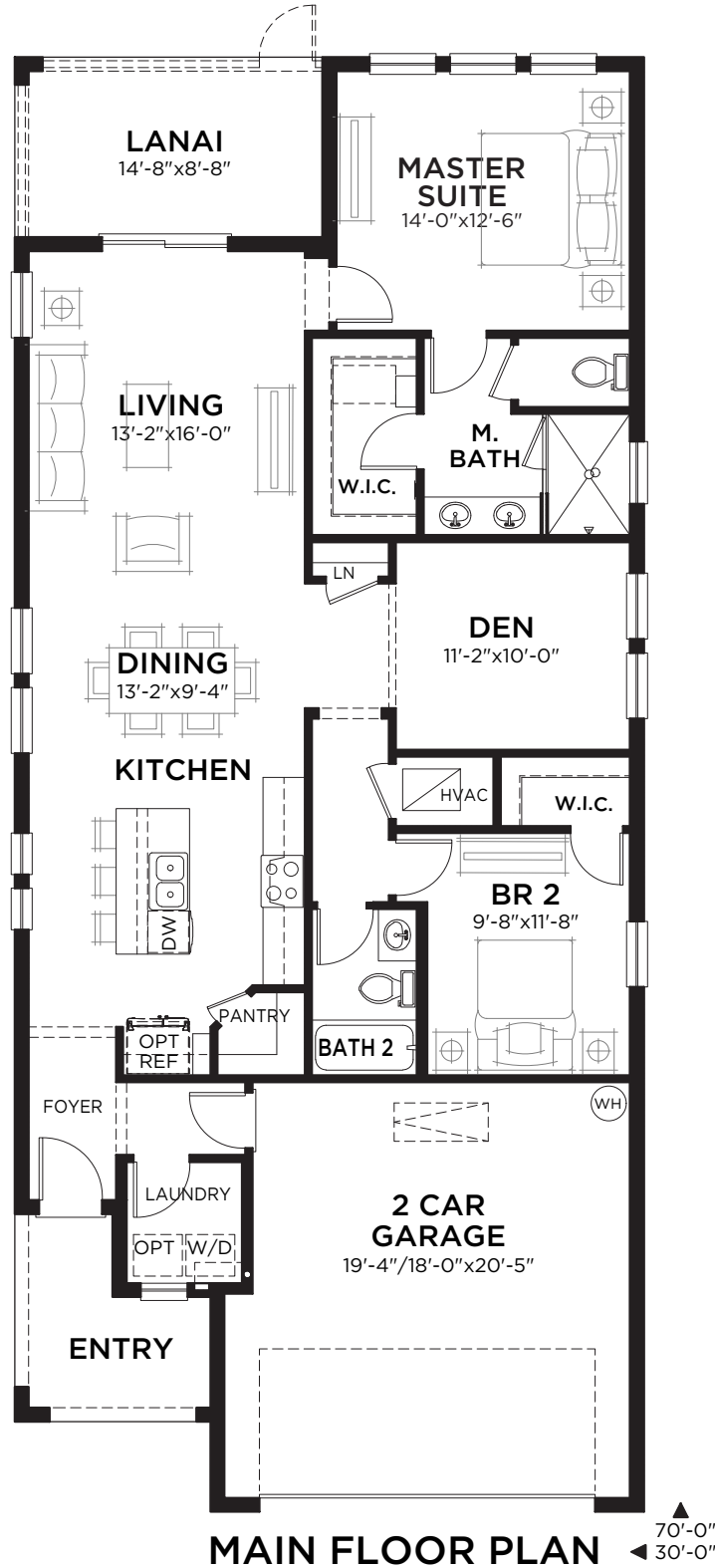


Foxtail T

Foxtail

2 bed • 2 bath • 2 car | 1,451 sq. ft.

WHY NOT START FRESH?



Area Schedule

Main Floor A/C	1451 SF
2 Car Garage	407 SF
Lanai	127 SF
Entry	75 SF
Total Area	2060 SF

Bismark

3 bed • 2 bath • 2 car | 1,615 sq. ft.

CASA *Fresca*
HOMES®

WHY NOT START FRESH?



Bismark B



Bismark M

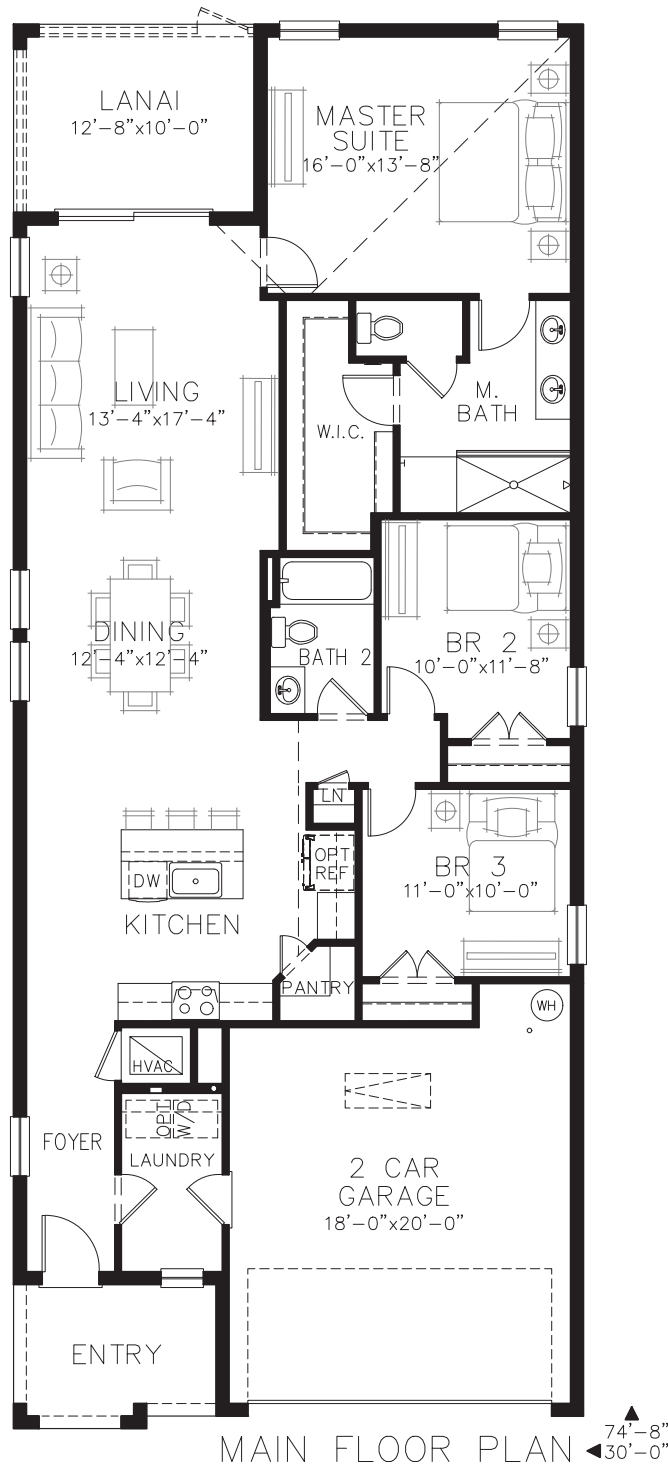


Bismark T

Bismark

3 bed • 2 bath • 2 car | 1,615 sq. ft.

WHY NOT START FRESH?



Area Schedule

Main Floor A/C	1615 SF
2 Car Garage	403 SF
Lanai	127 SF
Entry	82 SF
Total Area	2227 SF

Sylvester

3 bed • 3 bath • 2 car | 1,869 sq. ft.

CASA *Fresca*
HOMES®

WHY NOT START FRESH?



Sylvester M

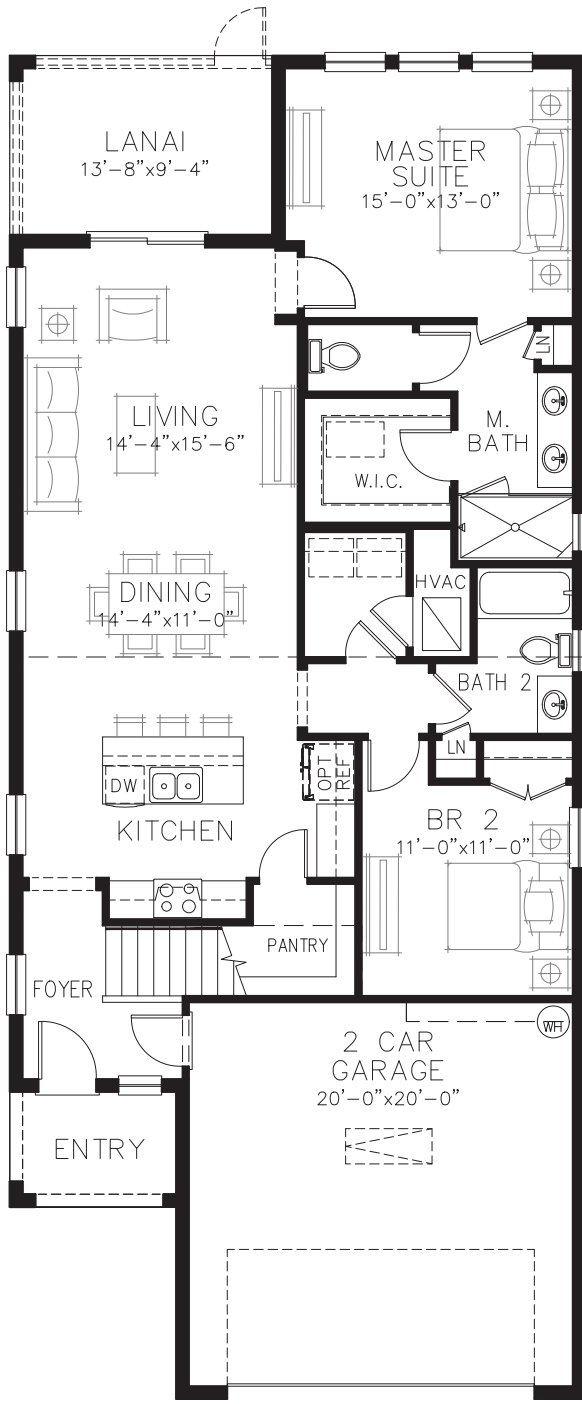


Sylvester T

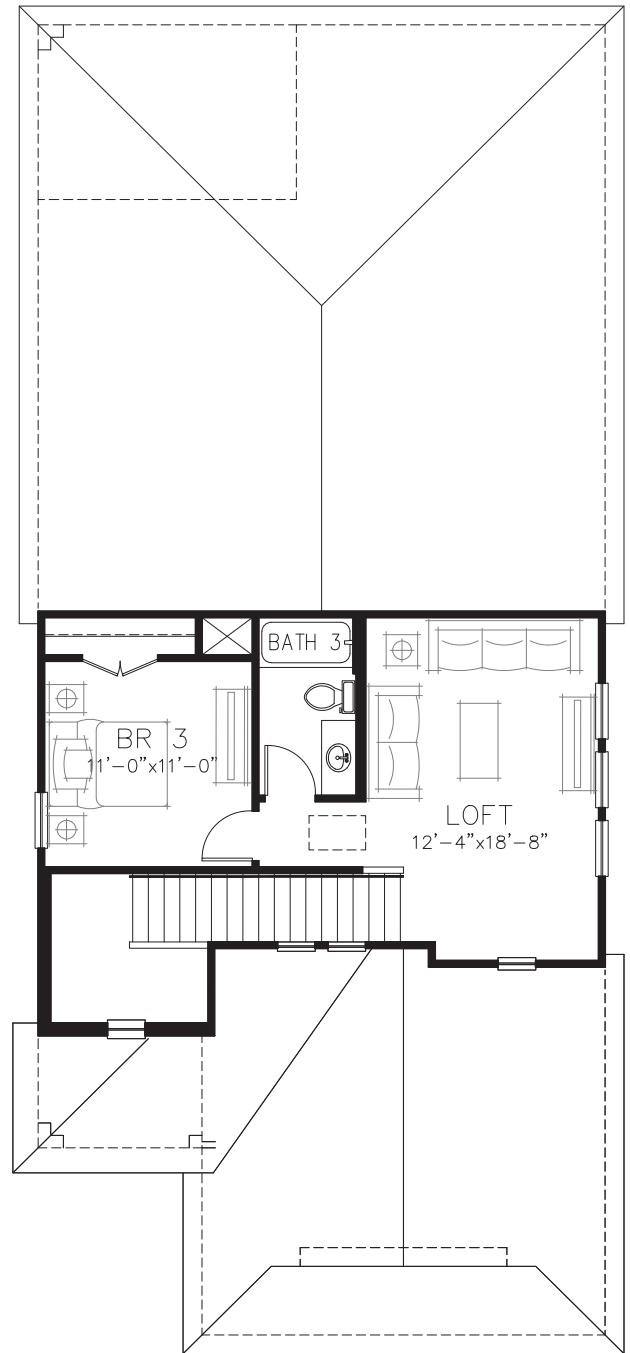
Sylvester

3 bed • 3 bath • 2 car | 1,869 sq. ft.

WHY NOT START FRESH?



MAIN FLOOR PLAN



Area Schedule

Main Floor A/C	1396 SF
Upper Floor A/C	473 SF
TOTAL A/C	1869 SF
2 Car Garage	438 SF
Lanai	128 SF
Entry	52 SF
Total Area	2487 SF

Coconut

2 bed • 2 bath • 2 car | 1,700 sq. ft.

WHY NOT START FRESH?



Coconut A



Coconut C

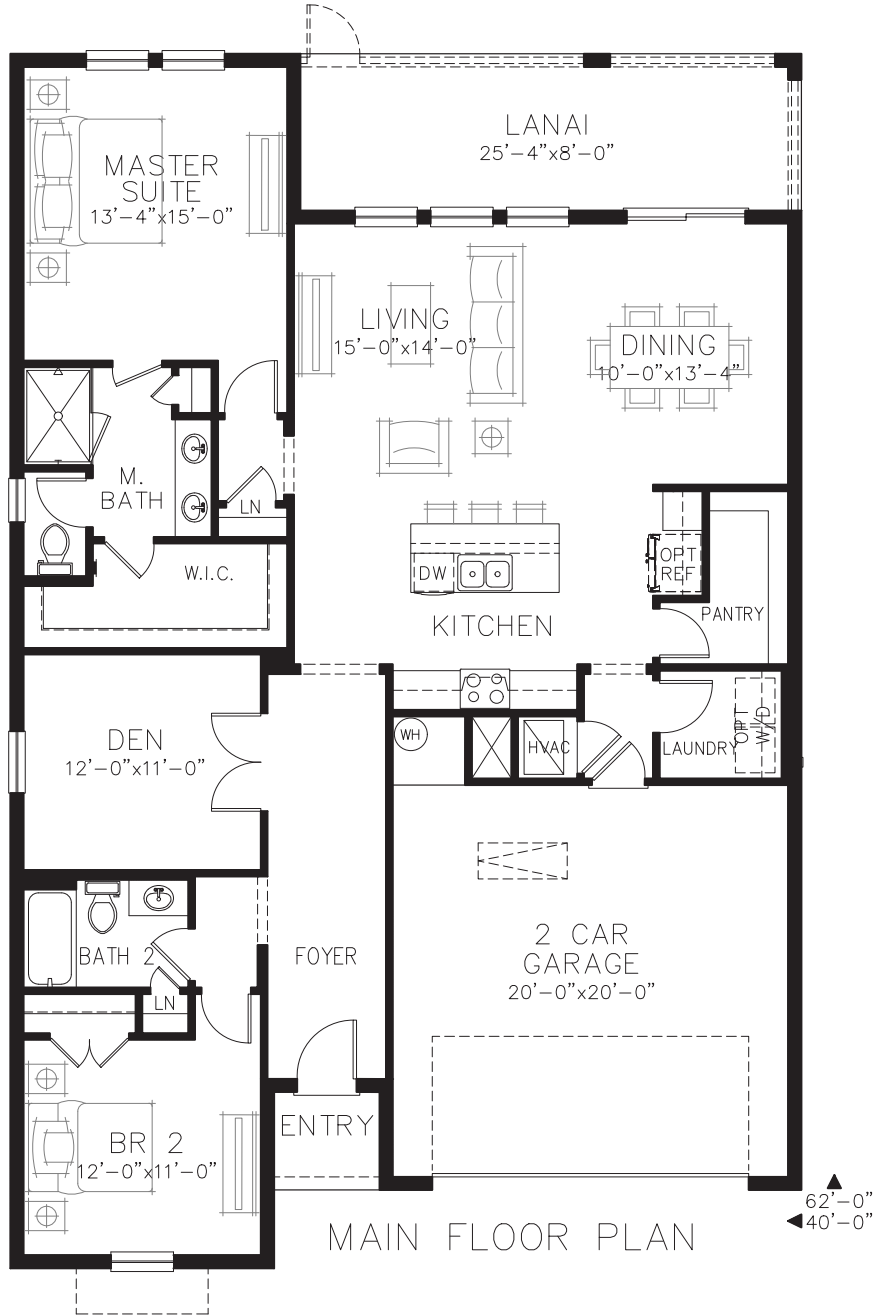


Coconut T

Coconut

2 bed • 2 bath • 2 car | 1,700 sq. ft.

WHY NOT START FRESH?



Area Schedule

Main Floor A/C	1700 SF
2 Car Garage	443 SF
Lanai	203 SF
Entry	27 SF
Total Area	2373 SF

Palmetto

2 bed • 2 bath • 3 car | 1,810 sq. ft.

CASA *Fresca*
HOMES®

WHY NOT START FRESH?



Palmetto A



Palmetto B

Palmetto

2 bed • 2 bath • 3 car | 1,810 sq. ft.

CASA *Fresca*
HOMES®

WHY NOT START FRESH?



Palmetto M

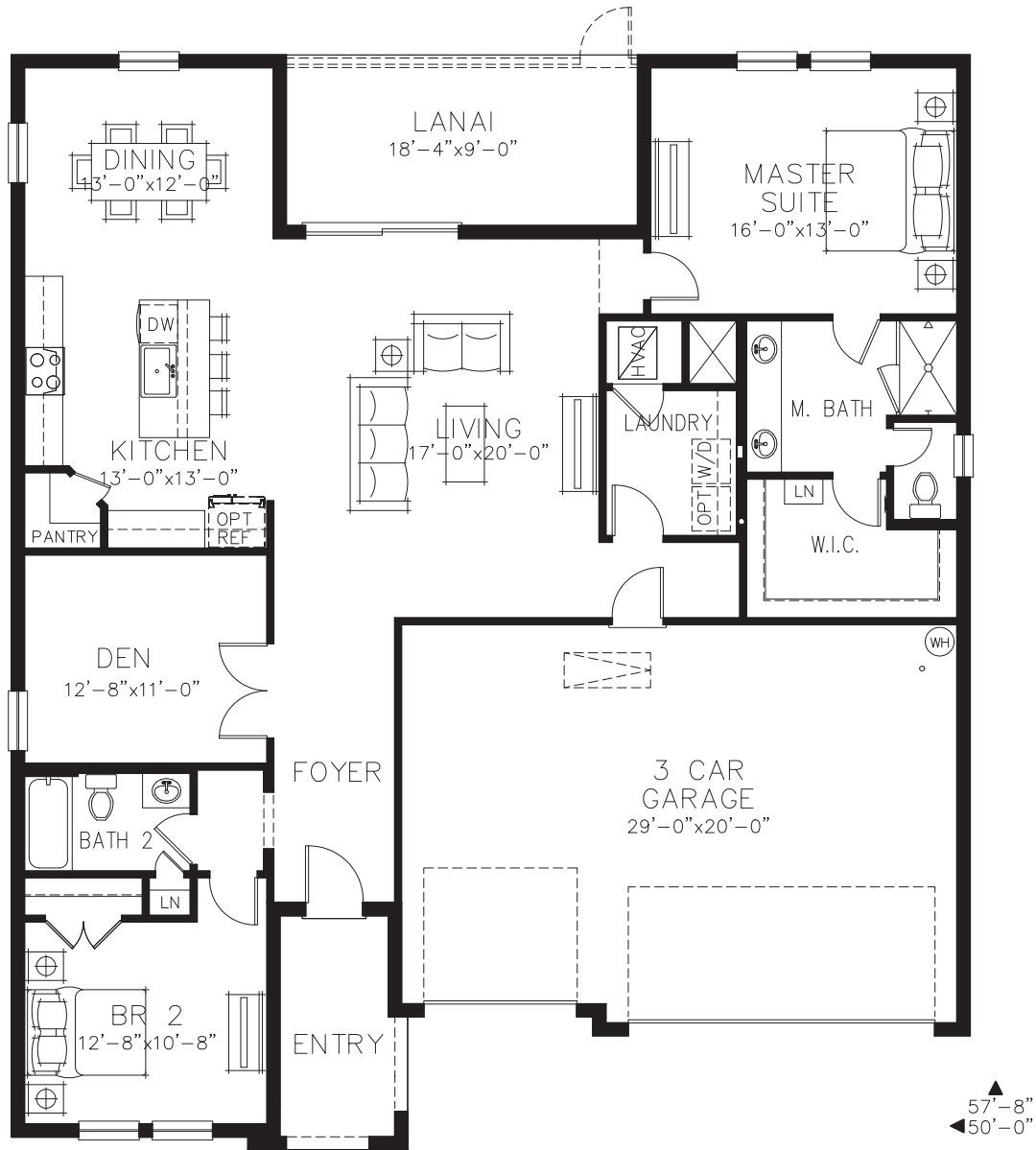


Palmetto T

Palmetto

2 bed • 2 bath • 3 car | 1,810 sq. ft.

WHY NOT START FRESH?



MAIN FLOOR PLAN

Main Floor A/C	1810 SF
Total A/C	1810 SF
3 Car Garage	636 SF
Entry	78 SF
Lanai	165 SF
Total Area	2689 SF

Montgomery

3 bed • 3 bath • 2 car | 1,985 sq. ft.

CASA *Fresca*
HOMES®

WHY NOT START FRESH?



Montgomery C

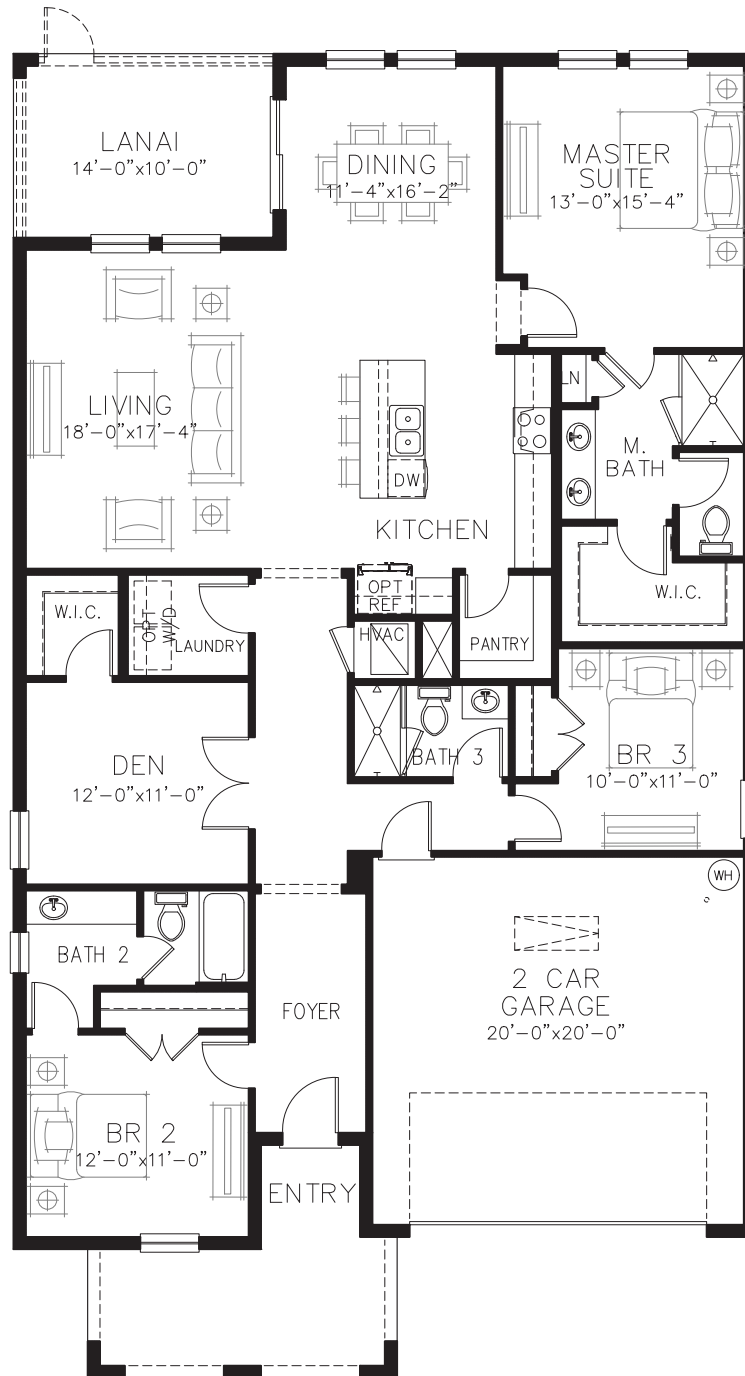


Montgomery M

Montgomery

3 bed • 3 bath • 2 car | 1,985 sq. ft.

WHY NOT START FRESH?



Area Schedule

Main Floor A/C	1985 SF
TOTAL A/C	1985 SF
2 Car Garage	430 SF
Lanai	140 SF
Entry	148 SF
Total Area	2703 SF