



WHY NOT START FRESH?

Site Plans, availability, specifications, pricing, and common areas are subject to change without notice. This is an artist's conceptual rendering. Home sites may be released in phases. Refer to a recorded plat for additional information. Please speak with a Casa Fresca Sales Consultant for current information.  
© 2024 Casa Fresca-Cool House, LLC. All Rights Reserved. Not an offer to purchase where prohibited by law. Broker Participation Welcome. CRC#057247  
10302024



# Cherrywood Preserve

## Bold Included Features

### Interior Features

- Decorative 5 1/4" colonial baseboards
- Decorative 2 1/4" colonial door casing
- Shaw LVP flooring on first floor living areas
- Lever door hardware in brushed nickel
- Two square panel, smooth colonist doors
- Maintenance-free, ventilated shelving throughout
- Smoke and carbon monoxide detectors wired to electrical system with battery back-up
- Cat6 data outlet in Master Suite and Living Room
- Structured media enclosure in Master Suite closet
- Ceiling fan pre-wire, switched in Living Room, Recreation Room (per plan), and all Bedrooms
- Recessed LED flush mount light fixtures
- Decora lighting switches
- Carpets with 7/16" 5.5lbs foam pad
- Optional Washer/Dryer, Refrigerator, and Window Treatment.

### Kitchen Features

- 2cm quartz countertops (per Interior Design selection)
- Spacious island workspace (per plan)
- Island seating area (per plan)
- Pull out Trash Drawer in Kitchen Island.
- LVP flooring in Kitchen
- Designer recessed panel cabinets, with soft closing doors and drawers, hardware with 42" upper cabinets and crown molding
- Premium 18-gauge, undermount, single bowl stainless-steel sink, 9-5/16" deep
- Single handle with pullout spray faucet in brush nickel finish
- Self-cleaning stainless-steel slide-in electric range
- Stainless-steel Microwave that vents directly to the house of the home to remove smoke, steam and odors.
- High-efficiency Energy Star stainless-steel dishwasher
- 1/3 hp garbage disposal
- Oversized, walk-in pantry with 5 rows of shelving (per plan)
- Recessed LED flush mount light fixtures

### Energy Saving Features

- High efficiency air conditioning system with SEER2 ratings that meets or exceeds current building codes
- Energy efficient range and heating system
- Smart thermostat with voice control
- LED flush mount light fixtures
- Energy efficient LED lightbulbs
- R-4.1 insulated block walls
- R-13 insulation in exterior framed walls
- R-30 batt/blown ceiling insulation over conditioned space
- Insulated AC ductwork hard-sealed with mastic
- Energy efficient water heater
- Air infiltration barrier between framing and drywall

### Exterior Features

- Attractive and architecturally authentic elevations with textured stucco and fiber cement siding systems
- Stylish exterior front door hardware with handle set and smart lock.
- Pavers at driveway, lead walk, and entry
- Insulated 2 Square panel fiberglass 6'8" or 8' 0" front door (plans vary) and 6'8" or 8'0" sliding glass rear door.
- High quality acrylic exterior paint
- Raised panel reinforced decorative garage doors
- Automatic garage door opener at each garage door with 1 remote.
- Low-E, insulated, argon-filled sliding glass doors (per plan)
- Professionally designed landscape packages
- One cast aluminum construction black outdoor wall lantern.
- One Outdoor Post Lantern
- Water-conserving irrigation systems
- Weather resistant acrylic paint on rear patio (per plan)
- Private, 2-car or 3-car garage (per plan)
- Exterior hose bibb at garage and rear of home
- Screened lanai enclosure with door

### Construction & Customer Care

- One-year non-transferable performance guarantee (subject to normal wear and tear)
- Four scheduled meetings with your Casa Fresca Construction Manager to learn about your new home
- First floor concrete block construction with poured, reinforced concrete cells
- Low-maintenance aluminum soffit and fascia
- 150 or 200 amp electrical service (per plan)
- BoraCare termite treatment
- Taexx built-in "tubes in the wall" pest control system

### Bathroom Features

- Spacious walk-in closets (per plan)
- LVP flooring
- 2.0 cm quartz countertops
- Mirrors with vanity lighting w/ recessed LED flush mount bulbs
- Single handle faucets in brush nickel finish
- Rectangular undermount sinks
- Elongated commodes
- Ceiling height tile shower surrounds with tile shower in the master and 7'6" height tile shower surrounds in the secondaries.
- Semi-frameless shower enclosures in master shower, framed shower enclosures at secondary showers (not included with tubs)
- Designer recessed panels cabinet with hardware and hidden hinges
- Grab bar blocking
- Spacious linen closets (per plan)

# Foxtail

2 bed • 2 bath • 2 car | 1,451 sq. ft.

CASA *Fresca*  
HOMES®

WHY NOT START FRESH?



**Foxtail M**



**Foxtail T**

2 bed • 2 bath • 2 car | 1,451 sq. ft.

## WHY NOT START FRESH?



Main Floor A/C	1451 SF
2 Car Garage	407 SF
Lanai	127 SF
Entry	75 SF
Total Area	2060 SF

Artist's conceptual rendering. Actual construction may vary. In color features and dimensions. Availability, specifications, and pricing are subject to change without notice. All plans require developer approval and may be modified in order to comply with these developer requirements. Please speak with a Casa Fresca Sales Consultant for current information and about options where applicable. © 2019 Casa Fresca-Cool Homes, LLC. All Rights Reserved. Not an offer to purchase where prohibited by law. Broker Participation Welcome. CRCA057247

hello@casafrescahomes.com  
CasaFrescaHomes.com



# Bismark

3 bed • 2 bath • 2 car | 1,615 sq. ft.

CASA *Fresca*  
HOMES®

WHY NOT START FRESH?



**Bismark B**



**Bismark M**

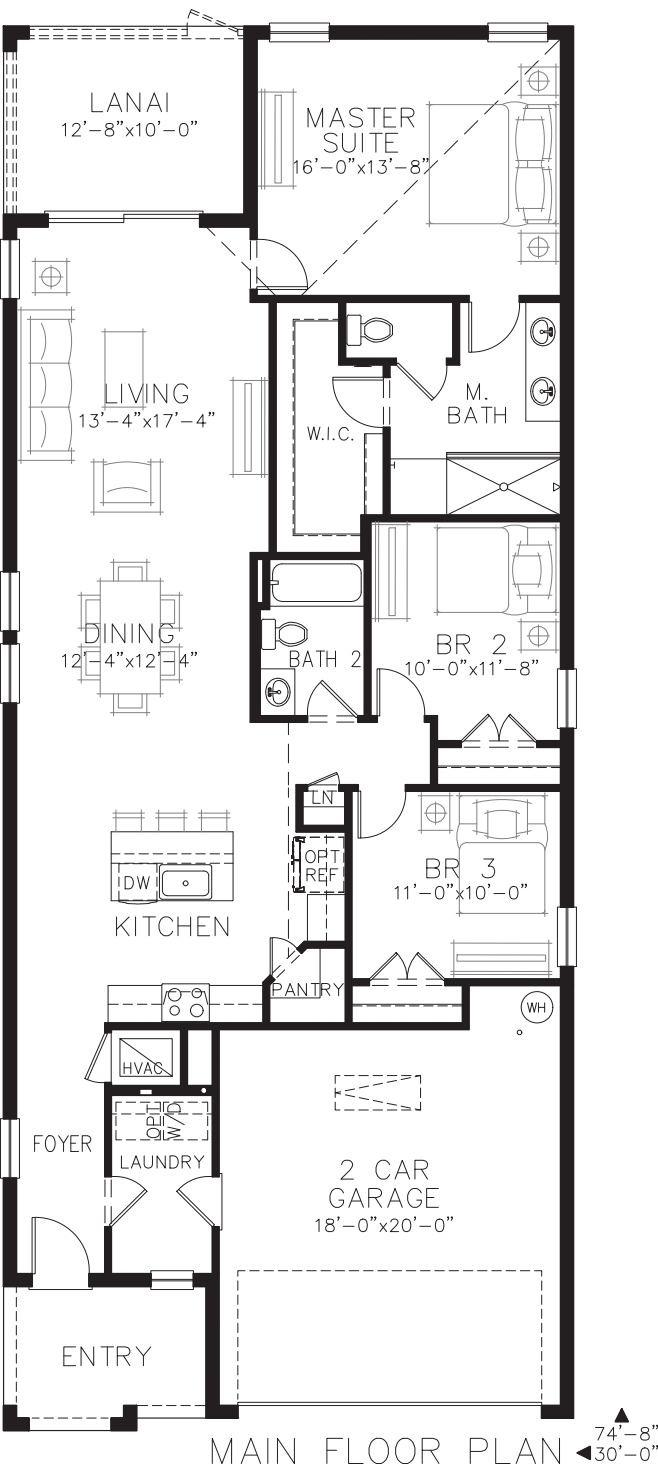


**Bismark T**

# Bismark

3 bed • 2 bath • 2 car | 1,615 sq. ft.

WHY NOT START FRESH?



### Area Schedule

Main Floor A/C	1615 SF
2 Car Garage	403 SF
Lanai	127 SF
Entry	82 SF
Total Area	2227 SF

# Sylvester

3 bed • 3 bath • 2 car | 1,869 sq. ft.

CASA *Fresca*  
HOMES®

WHY NOT START FRESH?



**Sylvester M**

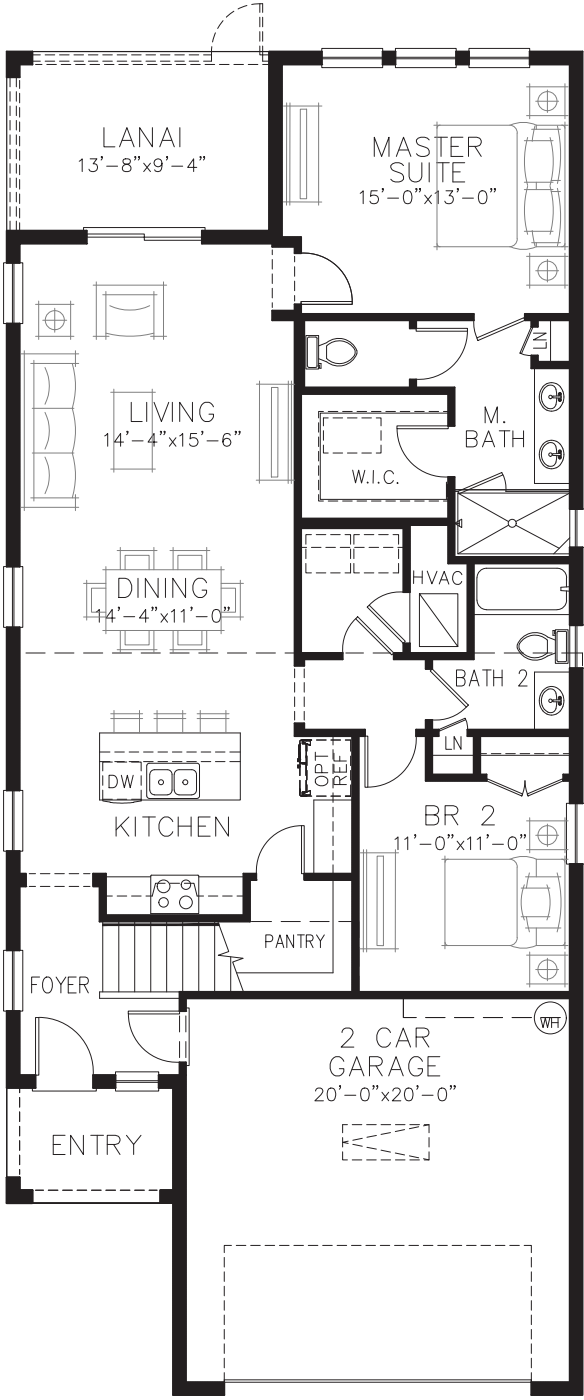


**Sylvester T**

# Sylvester

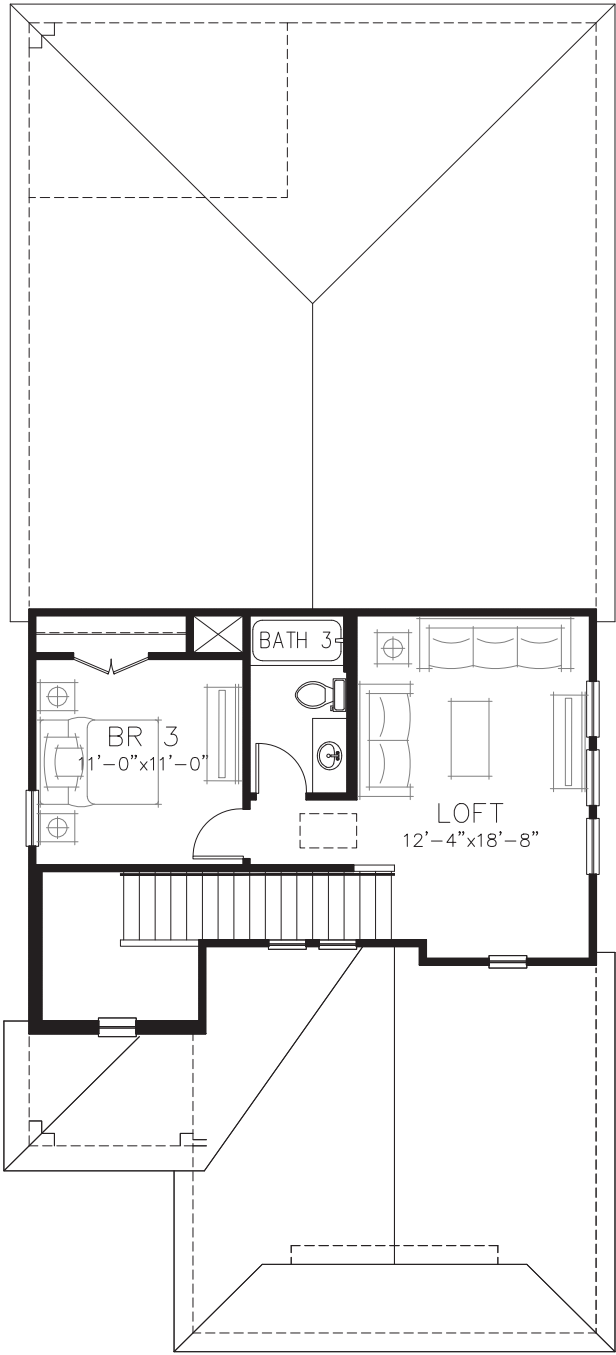
3 bed • 3 bath • 2 car | 1,869 sq. ft.

WHY NOT START FRESH?



MAIN FLOOR PLAN

70'-0"  
30'-0"



Area Schedule

Main Floor A/C	1396 SF
Upper Floor A/C	473 SF
TOTAL A/C	1869 SF
2 Car Garage	438 SF
Lanai	128 SF
Entry	52 SF
Total Area	2487 SF

# Coconut

2 bed • 2 bath • 2 car | 1,700 sq. ft.

CASA *Fresca*  
HOMES®

WHY NOT START FRESH?



**Coconut A**



**Coconut C**

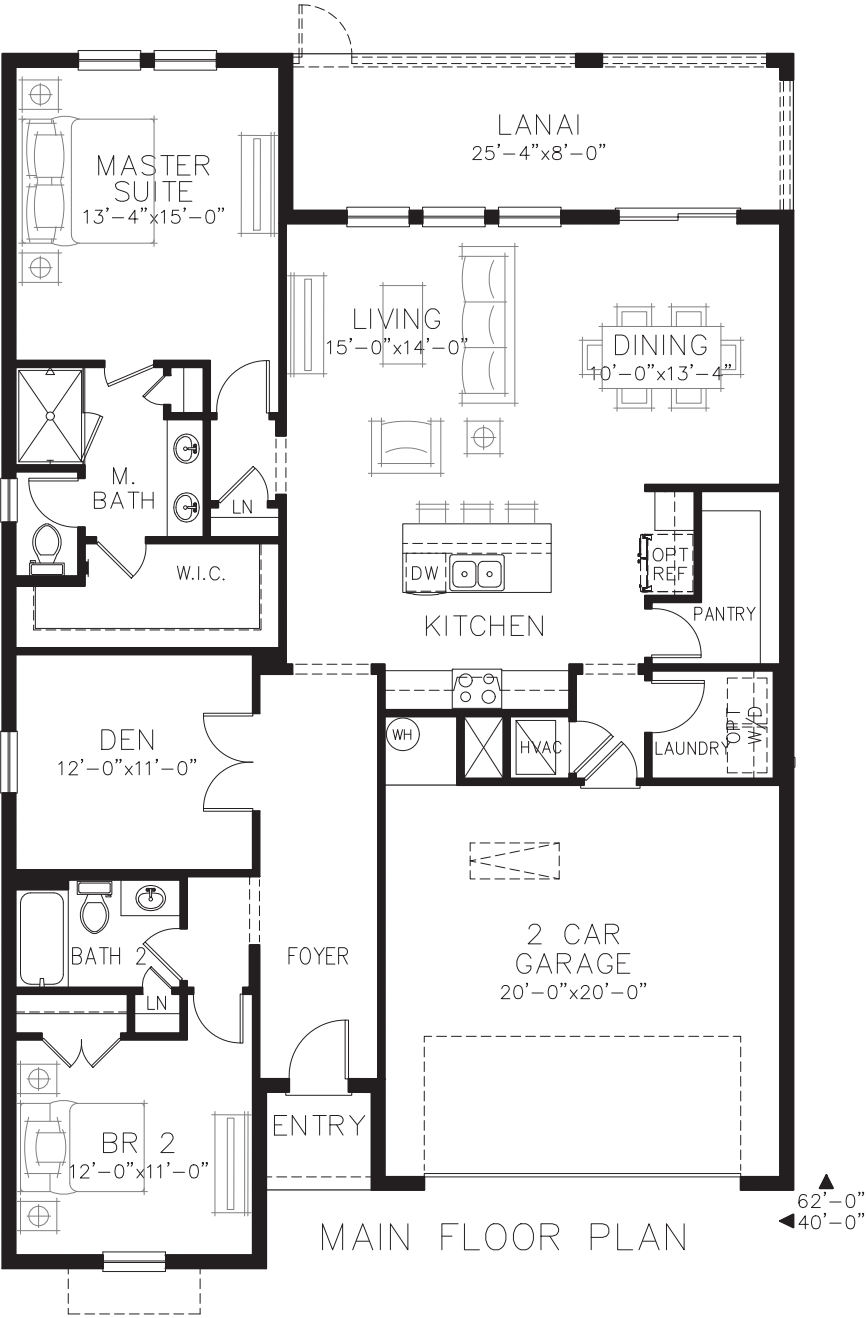


**Coconut T**

# Coconut

2 bed • 2 bath • 2 car | 1,700 sq. ft.

WHY NOT START FRESH?



Area Schedule

Main Floor A/C	1700 SF
2 Car Garage	443 SF
Lanai	203 SF
Entry	27 SF
Total Area	2373 SF

# Palmetto

2 bed • 2 bath • 3 car | 1,810 sq. ft.

CASA *Fresca*  
HOMES®

WHY NOT START FRESH?



**Palmetto A**



**Palmetto B**

# Palmetto

2 bed • 2 bath • 3 car | 1,810 sq. ft.

CASA *Fresca*  
HOMES®

WHY NOT START FRESH?



**Palmetto M**

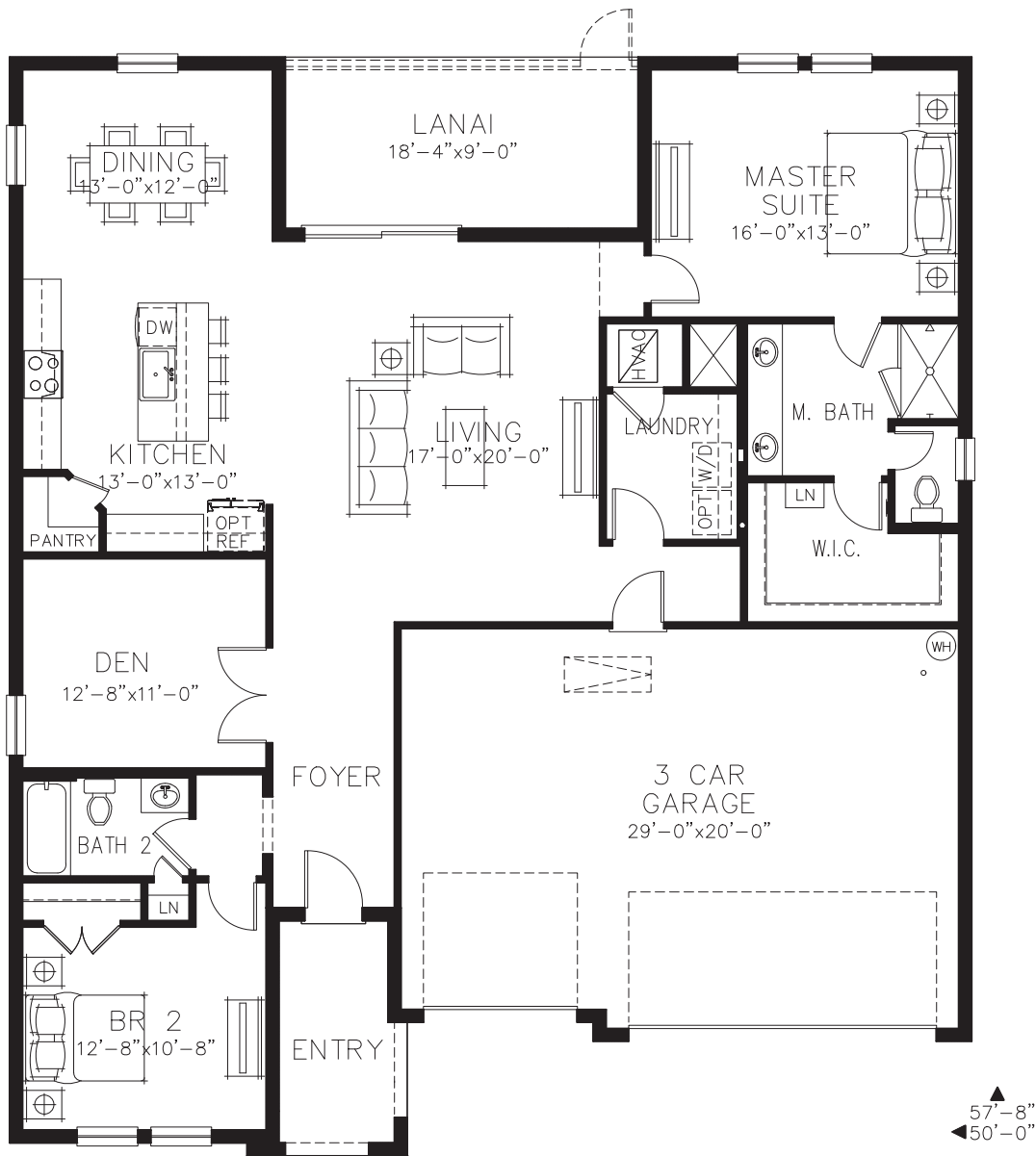


**Palmetto T**

# Palmetto

2 bed • 2 bath • 3 car | 1,810 sq. ft.

WHY NOT START FRESH?



MAIN FLOOR PLAN

Main Floor A/C	1810 SF
Total A/C	1810 SF
3 Car Garage	636 SF
Entry	78 SF
Lanai	165 SF
Total Area	2689 SF

# Montgomery

3 bed • 3 bath • 2 car | 1,985 sq. ft.

CASA *Fresca*  
HOMES®

WHY NOT START FRESH?



**Montgomery C**

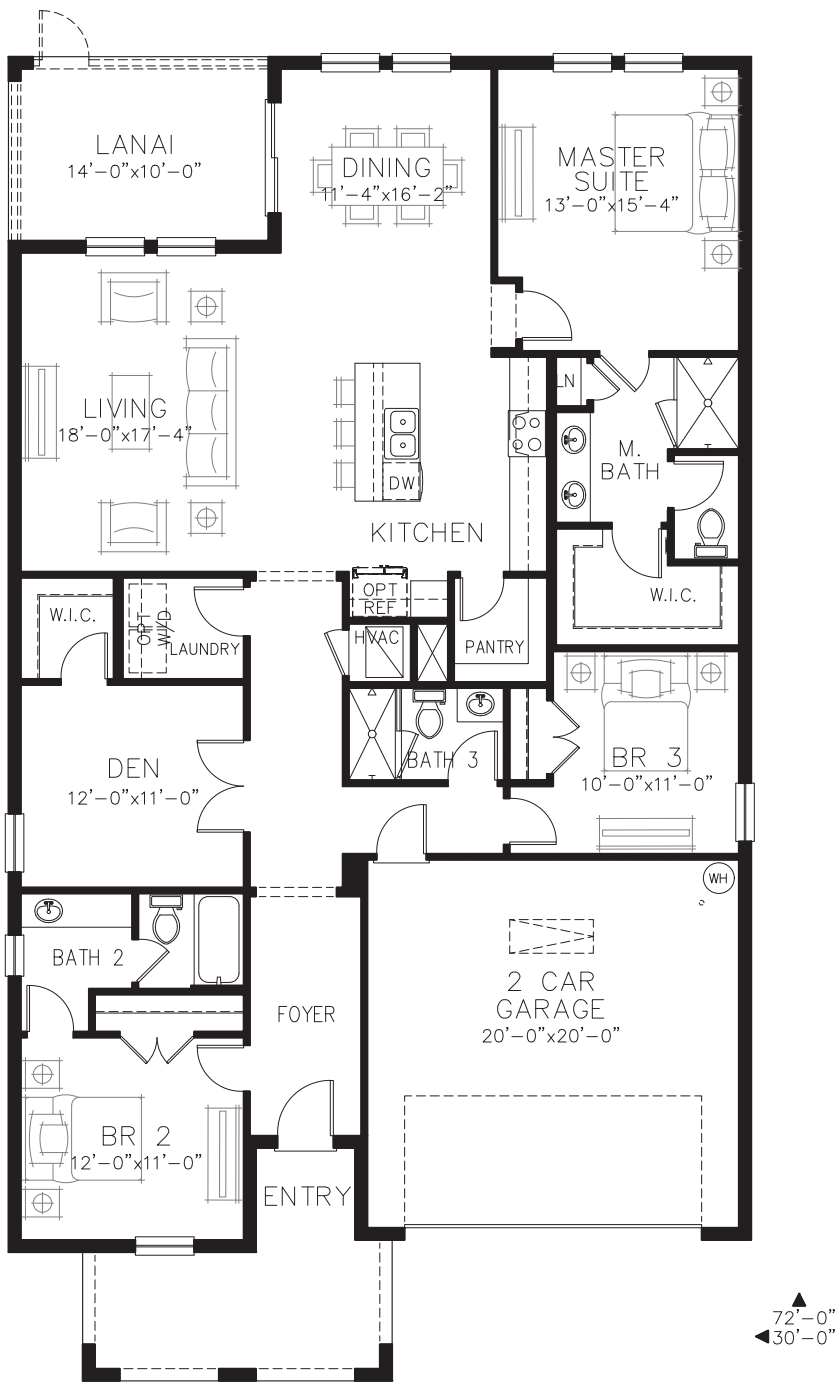


**Montgomery M**

# Montgomery

3 bed • 3 bath • 2 car | 1,985 sq. ft.

WHY NOT START FRESH?



Area Schedule

Main Floor A/C	1985 SF
TOTAL A/C	1985 SF
2 Car Garage	430 SF
Lanai	140 SF
Entry	148 SF
Total Area	2703 SF