



Site Map Legend

- 50' Wide Homesite
- Model Home
- Model Parking



WHY NOT START FRESH?



BOLD Included Features - Mirada

Interior Features

- Decorative 5 1/4" colonial baseboards
- Decorative 2 1/4" colonial door casing
- Shaw LVP flooring on first floor living areas
- Lever door hardware in brushed nickel
- Two square panel, smooth colonist doors
- Maintenance-free, ventilated shelving throughout
- Smoke and carbon monoxide detectors wired to electrical system with battery back-up
- Cat6 data outlet in Master Suite and Living Room
- Structured media enclosure in Master Suite closet
- Ceiling fan pre-wire, switched in Living Room, Recreation Room (per plan), and all Bedrooms
- Recessed LED flush mount light fixtures
- Decora lighting switches
- Carpets with 7/16" 5.5lbs foam pad

Kitchen Features

- 2cm quartz countertops (per Interior Design selection)
- Spacious island workspace (per plan)
- Island seating area (per plan)
- Pullout trash drawer in Kitchen
- Shaw LVP flooring in Kitchen
- Designer recessed panel cabinets with soft close doors, drawers, and hardware with 42" upper cabinets and crown molding
- Sterling by Kohler premium 18-gauge, undermount, single bowl stainless-steel sink, 9-5/16" deep with SilentShield® sound-absorption technology
- Moen "Arbor" single handle with pullout spray faucet in Spot Resist Stainless finish
- Whirlpool self-cleaning slide-in stainless-steel range
- Whirlpool Direct Vent stainless-steel microwave
- Whirlpool high-efficiency Energy Star stainless-steel dishwasher
- Moen 1/3 hp garbage disposal
- Oversized, walk-in pantry with 5 rows of shelving (per plan)
- Recessed LED flush mount light fixtures

Bathroom Features

- Spacious walk-in closets (per plan)
- Shaw LVP flooring
- 2cm quartz countertops (per Interior Design selection)
- Mirrors with vanity lighting w/ recessed LED flush mount bulbs
- Moen "Genta" single handle faucets in brushed nickel finish
- Rectangular undermount sinks
- Sterling by Kohler elongated commode
- Ceiling height tile shower surrounds with tile shower floors
- Semi-frameless shower enclosures (not included with tubs)
- Designer recessed panels cabinets, with soft closing doors and drawers
- Spacious linen closets (per plan)
- Designer free standing tub (per plan)

Exterior Features

- Attractive and architecturally authentic elevations with textured stucco and fiber cement siding systems
- Stylish exterior front door hardware with handleset and smart lock
- Insulated 2 square panel fiberglass 8' front door and 8' sliding glass rear door (per plan)
- Paver driveways, lead walk, porch and/or entryway
- Tile roof
- High quality acrylic exterior paint
- Raised panel reinforced decorative garage doors
- Smart garage door opener with 1 remote
- Low-E, insulated, argon-filled sliding glass doors (per plan)
- Professionally designed landscape packages
- One cast aluminum construction black Welbourne outdoor wall lantern
- Water-conserving irrigation systems
- Weather resistant acrylic paint on rear patio (per plan)
- Private, 2-car or 3-car garage (per plan)
- Exterior hose bibb at garage and rear of home

Energy Saving Features

- High efficiency air conditioning system with SEER2 ratings that meets or exceeds current building codes
- Energy efficient range and heating system
- Carrier® ecobee3™ Lite with voice control
- LED flush mount light fixtures
- Energy efficient LED lightbulbs
- R-4.1 insulated block walls
- R-13 insulation in exterior framed walls
- R-30 batt/blown ceiling insulation over conditioned space
- Insulated AC ductwork hard-sealed with mastic
- Energy efficient water heater
- Air infiltration barrier between framing and drywall

Construction & Customer Care

- One-year non-transferable performance guarantee (subject to normal wear and tear)
- Four scheduled meetings with your Casa Fresca Construction Manager to learn about your new home
- First floor concrete block construction with poured, reinforced concrete cells
- Low-maintenance soffit and fascia
- 150 or 200 amp electrical service (per plan)
- BoraCare termite treatment
- Taexx built-in "tubes in the wall" pest control system

Bahia

3 bed • 2 bath • 2 car | 1,699 sq. ft.

CASA *Fresca*
HOMES®

WHY NOT START FRESH?



Bahia A



Bahia B

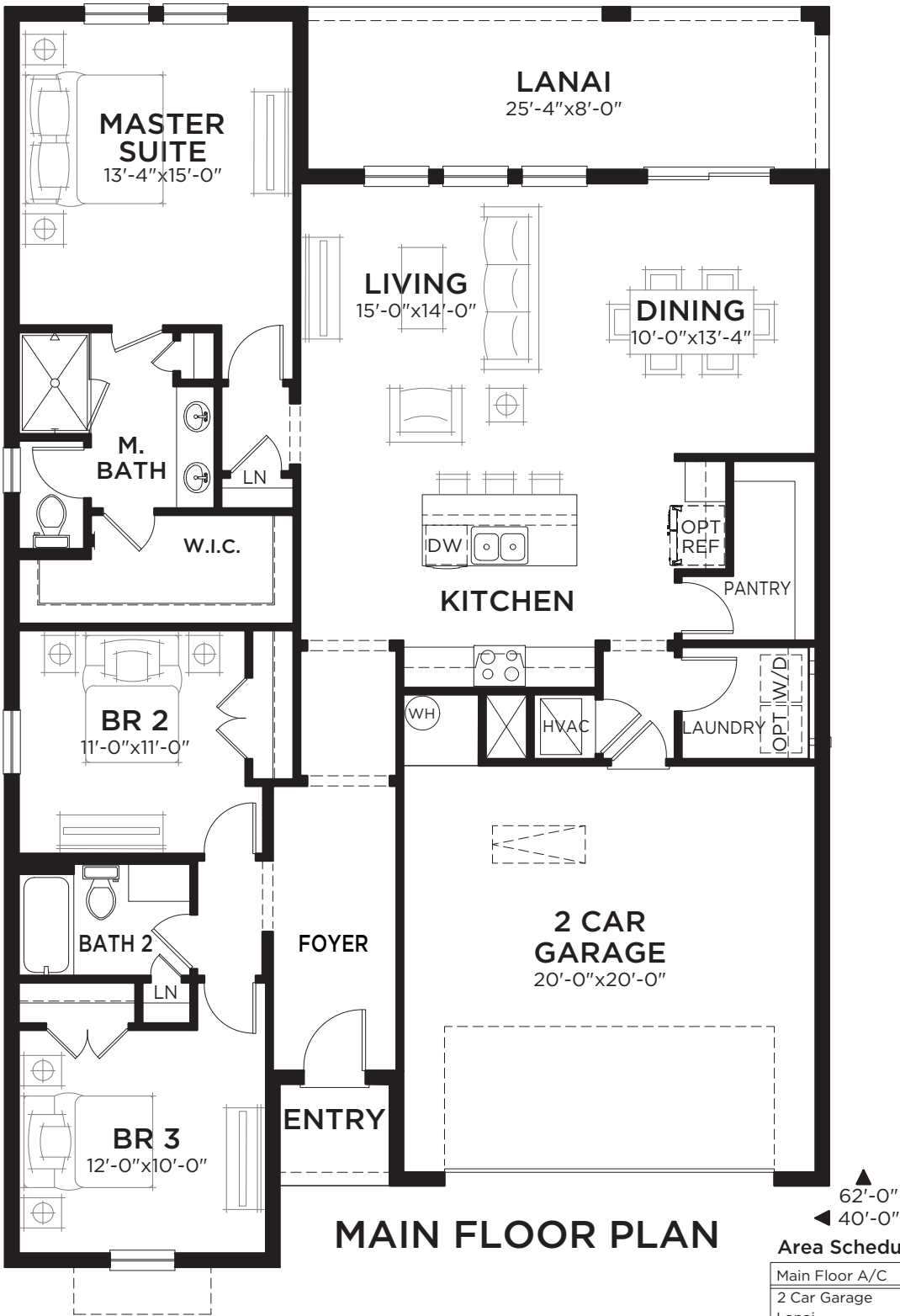


Bahia C

Bahia

3 bed • 2 bath • 2 car | 1,699 sq. ft.

WHY NOT START FRESH?



Area Schedule

Main Floor A/C	1699 SF
2 Car Garage	444 SF
Lanai	203 SF
Entry	27 SF
Total Area	2373 SF

Calusa

4 bed • 3 bath • 2 car | 1,985 sq. ft.

CASA *Fresca*
HOMES®

WHY NOT START FRESH?



Calusa A



Calusa B

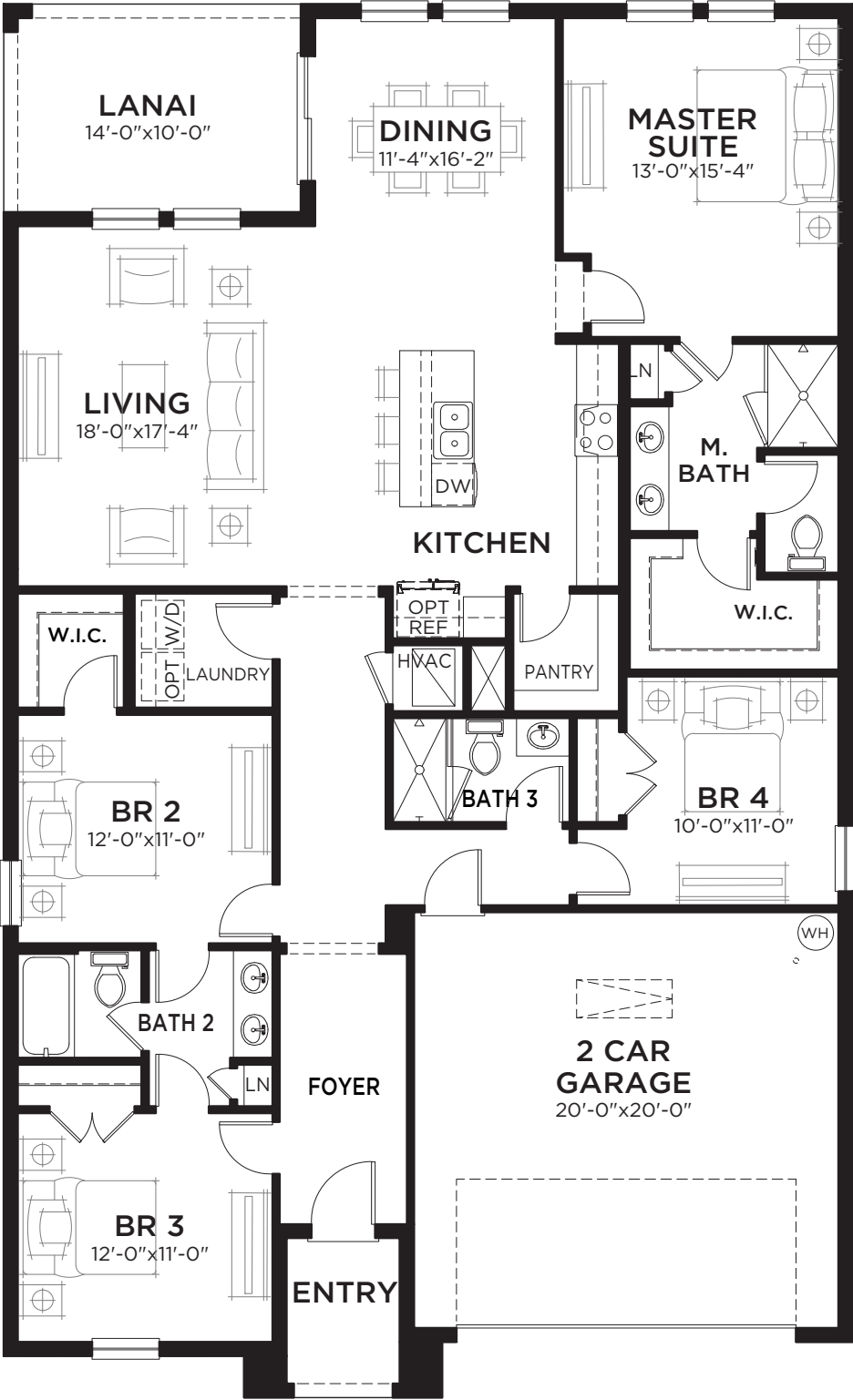


Calusa C

Calusa

4 bed • 3 bath • 2 car | 1,985 sq. ft.

WHY NOT START FRESH?



MAIN FLOOR PLAN

67'-0"
30'-0"

Area Schedule	
Main Floor A/C	1985 SF
TOTAL A/C	1985 SF
2 Car Garage	430 SF
Lanai	140 SF
Entry	50 SF
Total Area	2605 SF

Artist's conceptual rendering. Actual construction may vary in color, features, and dimensions. Availability, specifications, and pricing are subject to change without notice. All plans require developer approval and may be modified in order to comply with these developer requirements. Please speak with a Casa Fresca Sales Consultant for current information and about options where applicable. © 2024 Casa Fresca-Cool Homes, LLC. All Rights Reserved. Not an offer to purchase where prohibited by law. Broker Participation Welcome. CRC#057247

Mariposa

4 bed • 3 bath • 2 car | 2,289 sq. ft.

CASA *Fresca*
HOMES®

WHY NOT START FRESH?



Mariposa A



Mariposa B



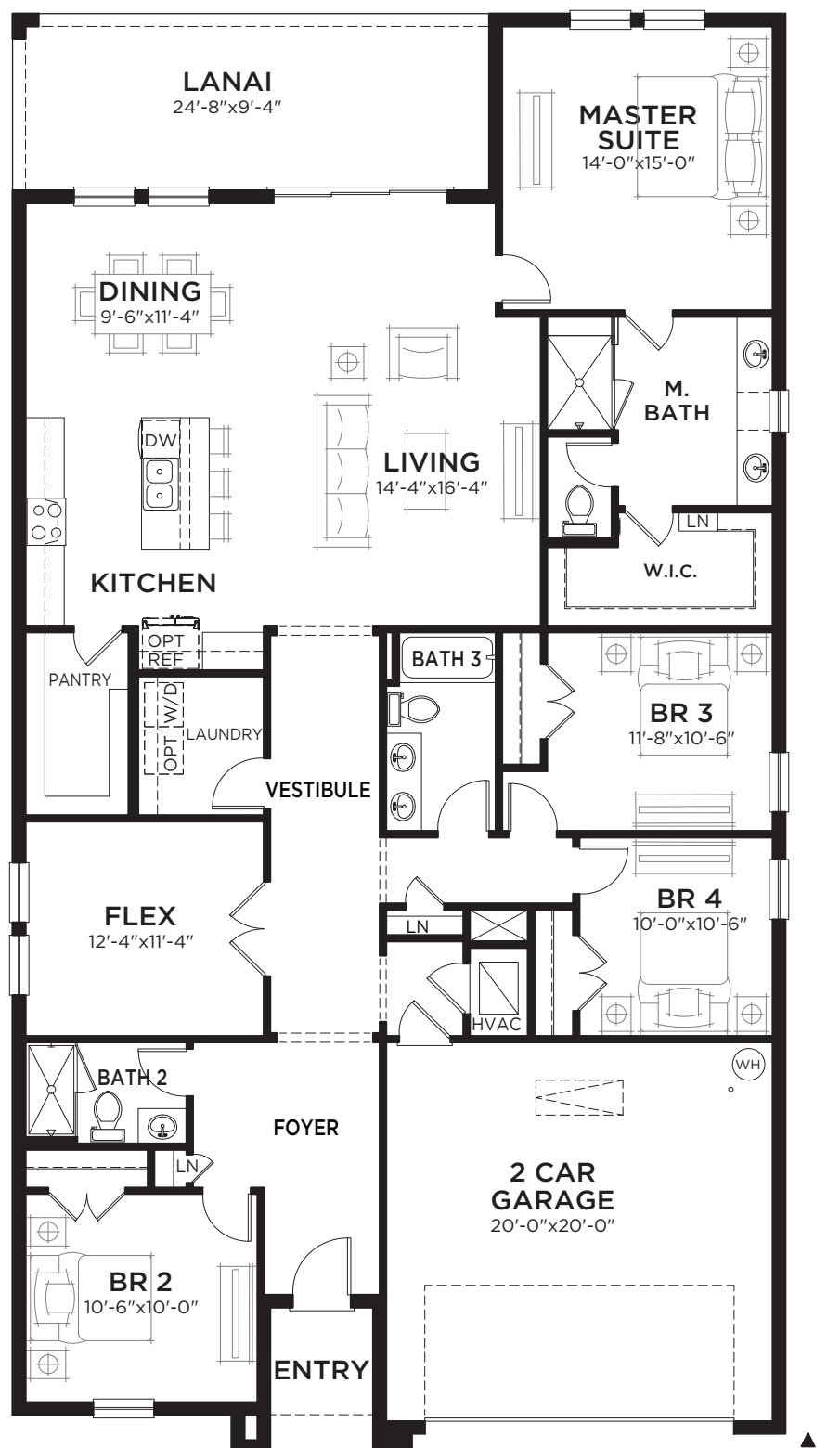
Mariposa C

Mariposa

4 bed • 3 bath • 2 car | 2,289 sq. ft.

CASA *Fresca*
HOMES®

WHY NOT START FRESH?



MAIN FLOOR PLAN

Main Floor A/C	2289 SF
2 Car Garage	432 SF
Lanai	230 SF
Entry	47 SF
Total Area	2998 SF

Artist's conceptual rendering. Actual construction may vary. In color features and dimensions. Availability, specifications, and pricing are subject to change without notice. All plans are for developer appraisal and may be modified in order to comply with these development requirements. Please speak with Casa Fresca Sales Consultant for current information and about options where applicable. © 2024 Casa Fresca-Cool Homes, LLC. All Rights Reserved. Not an offer to purchase where prohibited by law. Broker Participation Welcome. CRCH057247

hello@casafrescAHomes.com
CasaFrescaHomes.com



Amelia

5 bed • 3 bath • 2 car | 2,723 sq. ft.

CASA *Fresca*
HOMES®

WHY NOT START FRESH?



Amelia A



Amelia B

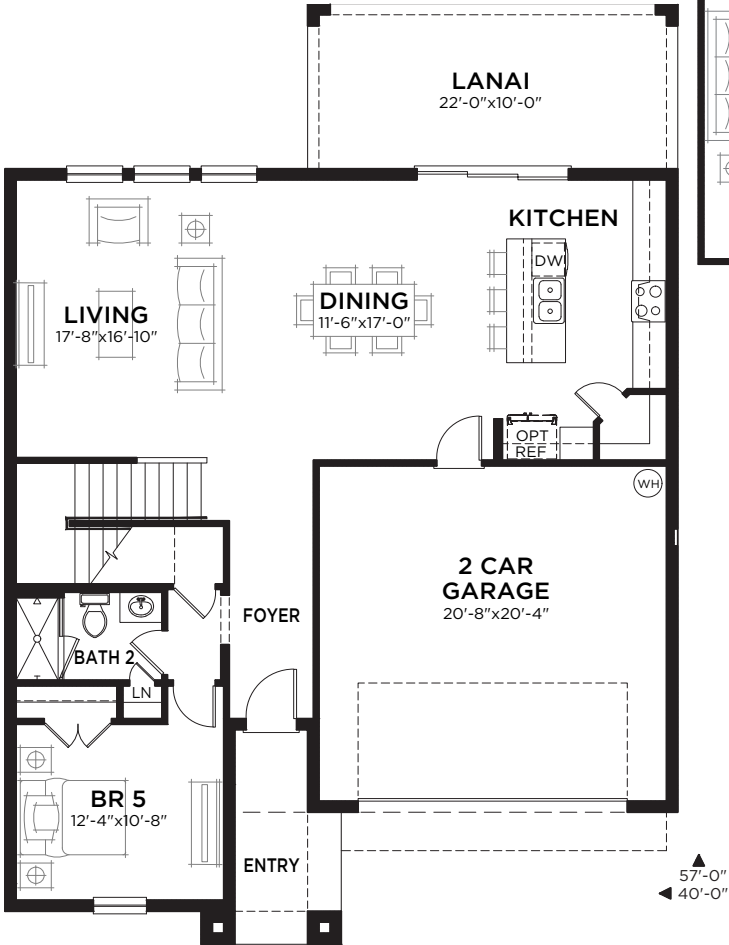


Amelia C

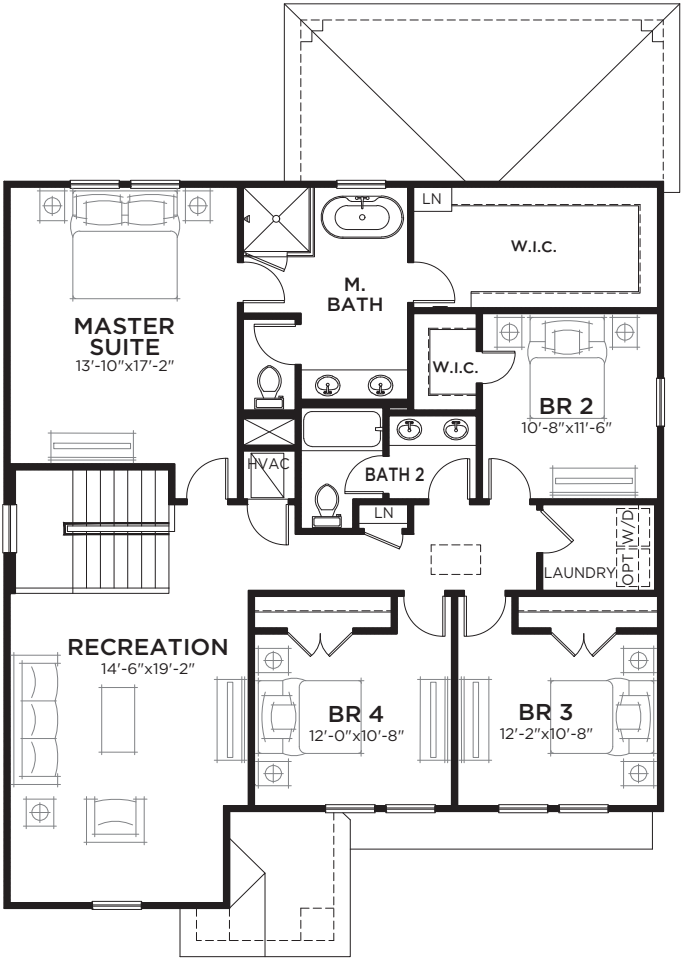
Amelia

5 bed • 3 bath • 2 car | 2,723 sq. ft.

WHY NOT START FRESH?



MAIN FLOOR PLAN



UPPER FLOOR PLAN

Area Schedule

Main Floor A/C	1154 SF
Upper Floor A/C	1569 SF
TOTAL A/C	2723 SF
2 Car Garage	466 SF
Lanai	220 SF
Entry	76 SF
Total Area	3485 SF

Anna Maria

5 bed • 3 bath • 2 car | 3,040 sq. ft.

CASA *Fresca*
HOMES®

WHY NOT START FRESH?



Anna Maria A



Anna Maria B

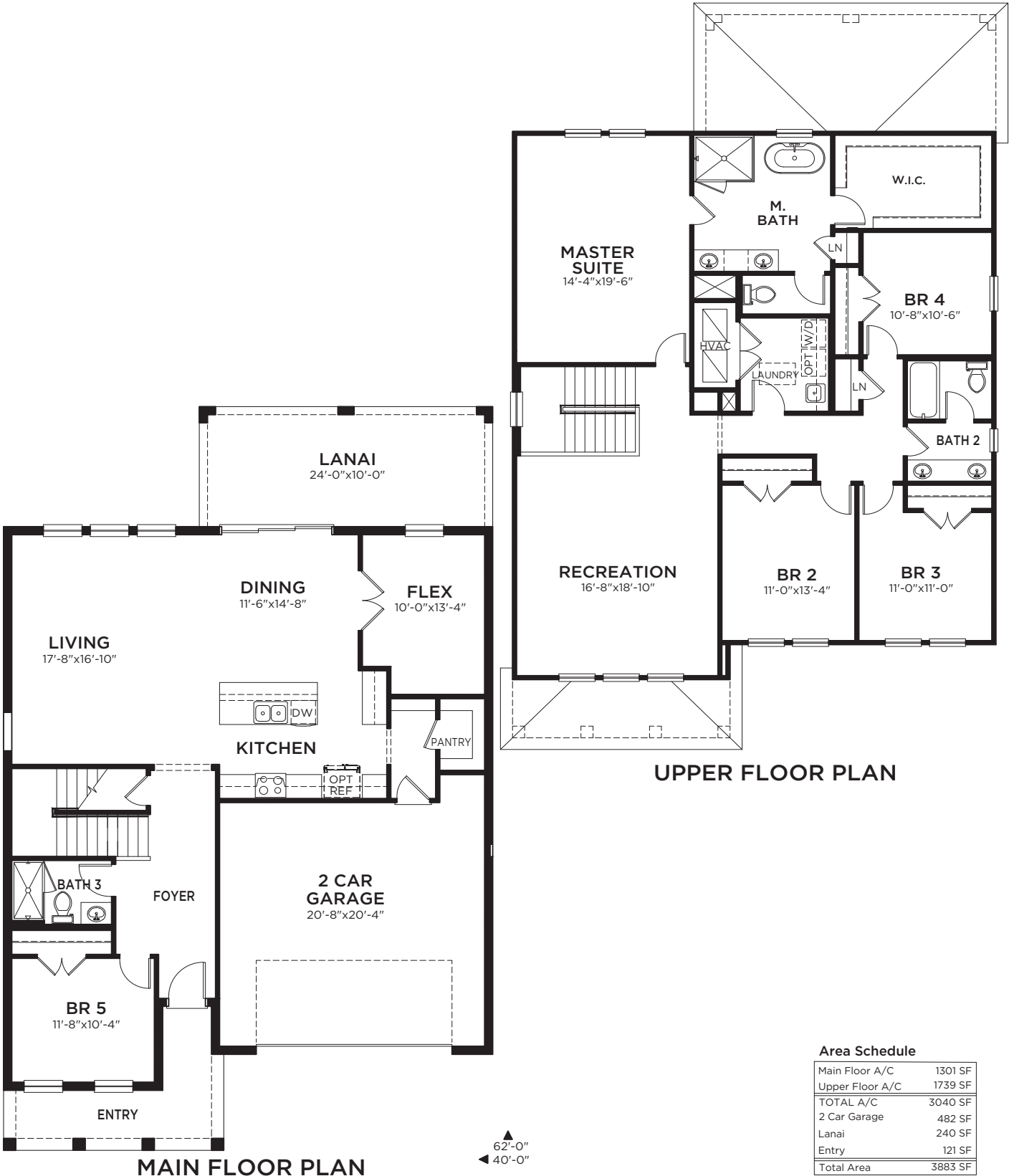


Anna Maria C

Anna Maria

5 bed • 3 bath • 2 car | 3,040 sq. ft.

WHY NOT START FRESH?



Lido

5 bed • 3 bath • 3 car | 3,164 sq. ft.

CASA *Fresca*
HOMES®

WHY NOT START FRESH?



Lido A



Lido B

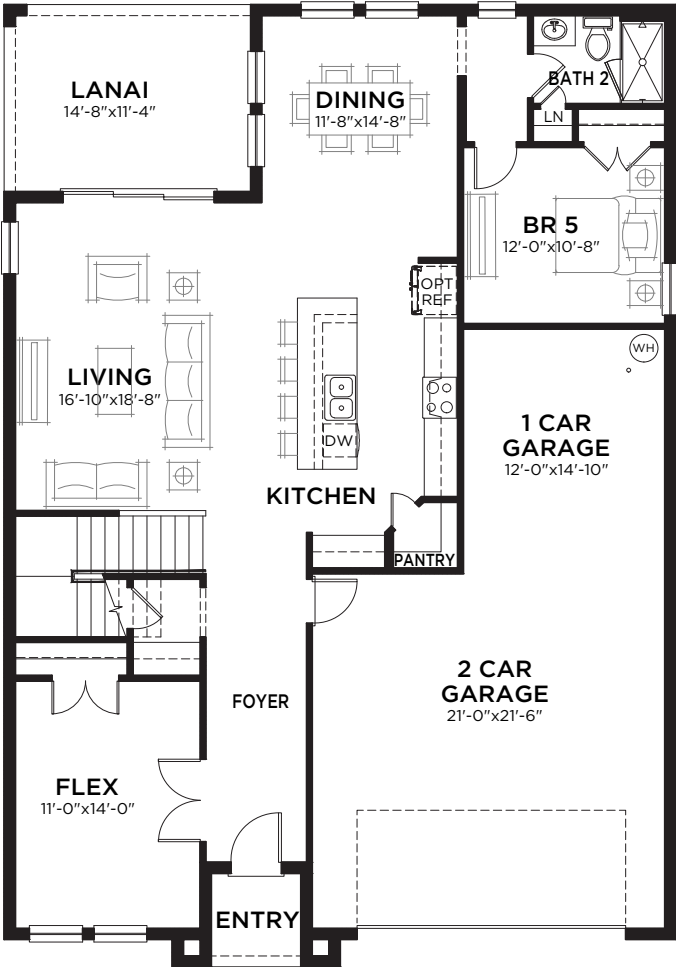


Lido C

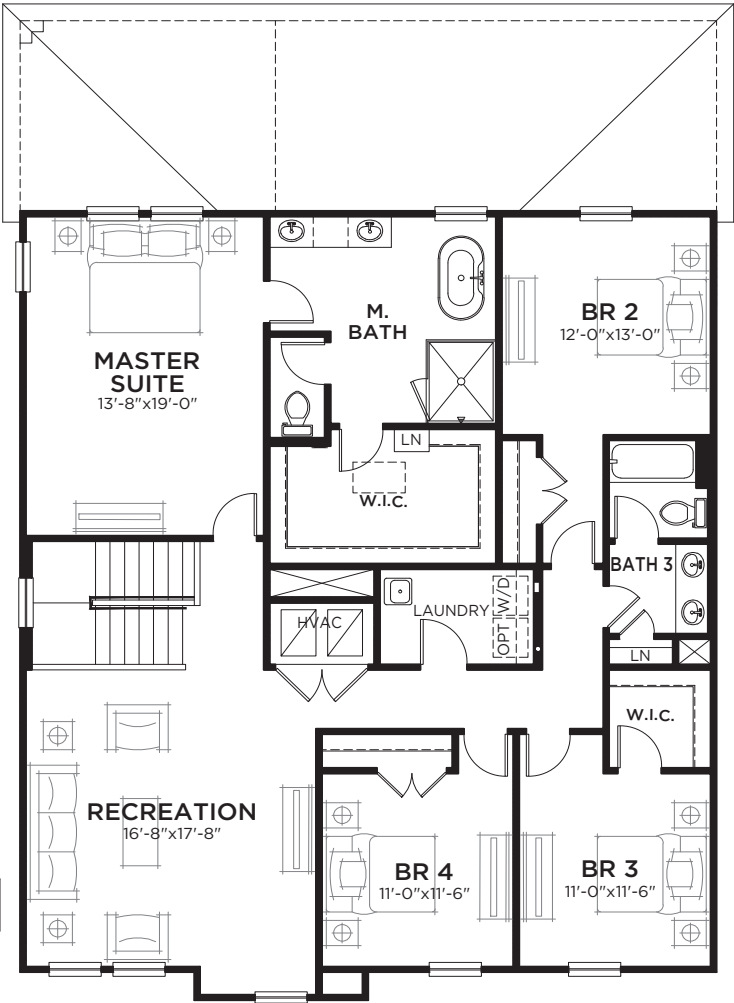
Lido

5 bed • 3 bath • 3 car | 3,164 sq. ft.

WHY NOT START FRESH?



MAIN FLOOR PLAN



UPPER FLOOR PLAN

Area Schedule

Main Floor A/C	1408 SF
Upper Floor A/C	1756 SF
TOTAL A/C	3164 SF
3 Car Garage	671 SF
Lanai	166 SF
Entry	38 SF
Total Area	4039 SF

Coquina

5-6 bed • 4 bath • 3 car | 3,364 sq. ft.

CASA *Fresca*
HOMES®

WHY NOT START FRESH?



Coquina A



Coquina B

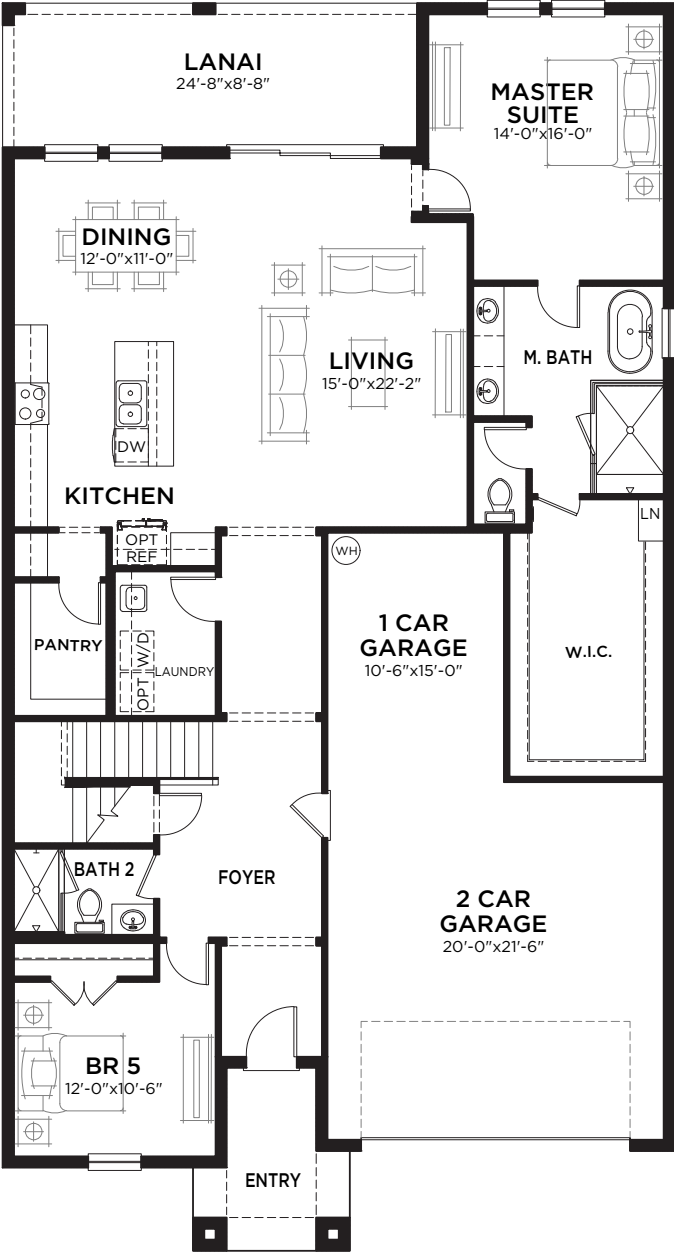


Coquina C

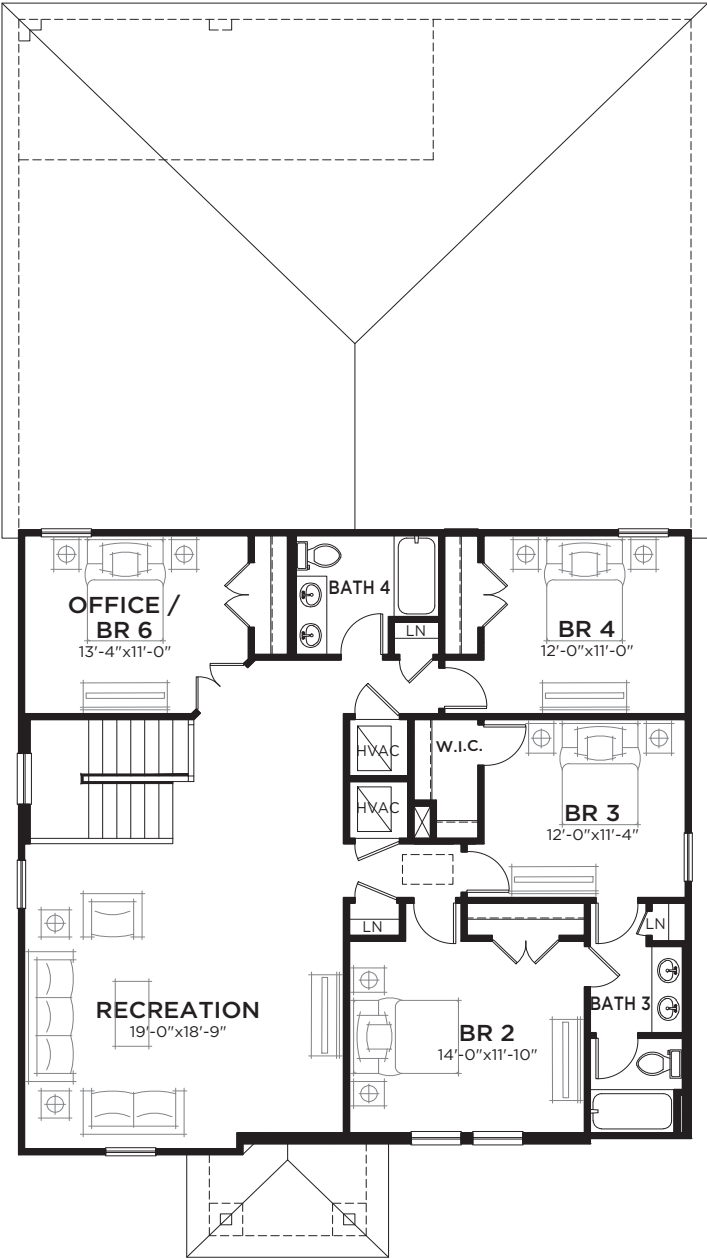
Coquina

5-6 bed • 4 bath • 3 car | 3,364 sq. ft.

WHY NOT START FRESH?



MAIN FLOOR PLAN



UPPER FLOOR PLAN

Area Schedule

Main Floor A/C	1914 SF
Upper Floor A/C	1450 SF
TOTAL A/C	3364 SF
3 Car Garage	619 SF
Lanai	214 SF
Entry	81 SF
Total Area	4278 SF