



Site Map Legend

- 40' Wide Homesite
- \* Model Home
- P Model Parking



WHY NOT START FRESH?

Site Plans, availability, specifications, pricing, and common areas are subject to change without notice. This is an artist's conceptual rendering. Home sites may be released in phases. Refer to a recorded plat for additional information. Please speak with a Casa Fresca Sales Consultant for current information. © 2022 Casa Fresca-Cool House, LLC. All Rights Reserved. Not an offer to purchase where prohibited by law. Broker Participation Welcome. CRC#057247 05102022



## Standard Included Features

### Interior Features

- Decorative 3 1/4" colonial baseboards
- Decorative 2 1/4" colonial door casing
- Shaw LVP flooring on first floor living areas
- Ball knob door hardware in brushed nickel
- Six panel, wood-grain texture colonist doors
- Maintenance-free, ventilated shelving throughout
- Smoke and carbon monoxide detectors wired to electrical system with battery back-up
- Cat6 data outlet in Master Suite and Living Room
- Structured media enclosure in Master Suite closet
- Ceiling fan pre-wire, switched in Living Room, Recreation Room (per plan), and all Bedrooms
- Recessed LED flush mount light fixtures
- Decora lighting switches
- Carpets with 7/16" 5.5lbs foam pad
- Interior washer and dryer hook-up with vent to the exterior
- White 2" faux wood window blinds

### Kitchen Features

- 1.6cm quartz countertops (per Interior Design selection)
- Spacious island workspace (per plan)
- Island seating area (per plan)
- Shaw LVP flooring in Kitchen
- Designer recessed panel cabinets, with hidden hinges and hardware with 30" upper cabinets
- Sterling by Kohler premium 18-gauge, undermount, single bowl stainless-steel sink, 9-5/16" deep with SilentShield® sound-absorption technology
- Moen "Method" single handle with pullout spray faucet in polished chrome finish
- GE self-cleaning stainless-steel range
- GE recirculating stainless-steel microwave
- GE high-efficiency Energy Star stainless-steel dishwasher
- Moen 1/3 hp garbage disposal
- Oversized, walk-in pantry with 5 rows of shelving (per plan)
- Recessed LED flush mount light fixtures

### Bathroom Features

- Spacious walk-in closets (per plan)
- Shaw LVP flooring
- 1.6cm quartz countertops
- Mirrors with vanity lighting w/ recessed LED flush mount bulbs
- Moen "Chateau" single handle faucets in polished chrome finish
- Top mounted china sinks
- Sterling by Kohler pedestal sink (per plan)
- Sterling by Kohler elongated commode
- Sterling by Kohler "Vikrell®" shower pan and/or tub and wall surrounds
- Designer recessed panels cabinet with hardware and hidden hinges
- Spacious linen closets (per plan)

### Exterior Features

- Attractive and architecturally authentic elevations with textured stucco and fiber cement siding systems
- Stylish exterior front door hardware with deadbolt in brushed nickel
- Insulated 6 panel fiberglass 6' 8" front and rear door (per plan)
- Non-slip concrete driveways, lead walk, porch and/or entryway
- Architectural dimensional 30-year shingle roof
- PPG high quality acrylic exterior paint
- Raised panel reinforced decorative garage doors
- Automatic garage door opener with two remotes
- Low-E, insulated, argon-filled sliding glass doors (per plan)
- Professionally designed landscape packages
- Water-conserving irrigation systems
- Weather resistant acrylic paint on front porch and rear patio (per plan)
- Private, 2-car or 3-car garage (per plan)
- Exterior hose bibb at garage and rear of home

### Energy Saving Features

- High efficiency air conditioning system with SEER2 ratings that meets or exceeds current building codes
- Energy efficient range and heating system
- Carrier® ecobee™ SmartThermostat Pro with voice control
- LED flush mount light fixtures
- Energy efficient LED lightbulbs
- R-4.1 insulated block walls
- R-13 insulation in exterior framed walls
- R-30 batt/blown ceiling insulation over conditioned space
- Insulated AC ductwork hard-sealed with mastic
- Energy efficient water heater
- Air infiltration barrier between framing and drywall

### Construction & Customer Care

- One-year non-transferable performance guarantee (subject to normal wear and tear)
- Four scheduled meetings with your Casa Fresca Construction Manager to learn about your new home
- First floor concrete block construction with poured, reinforced concrete cells
- Low-maintenance soffit and fascia
- 150 or 200 amp electrical service (per plan)
- BoraCare termite treatment
- Taexx built-in "tubes in the wall" pest control system

# Magenta

3 bed • 2 bath • 2 car | 1,615 sq. ft.

CASA *Fresca*  
HOMES®

WHY NOT START FRESH?



## Magenta A

Color Scheme 6



## Magenta B

Color Scheme 16



## Magenta C

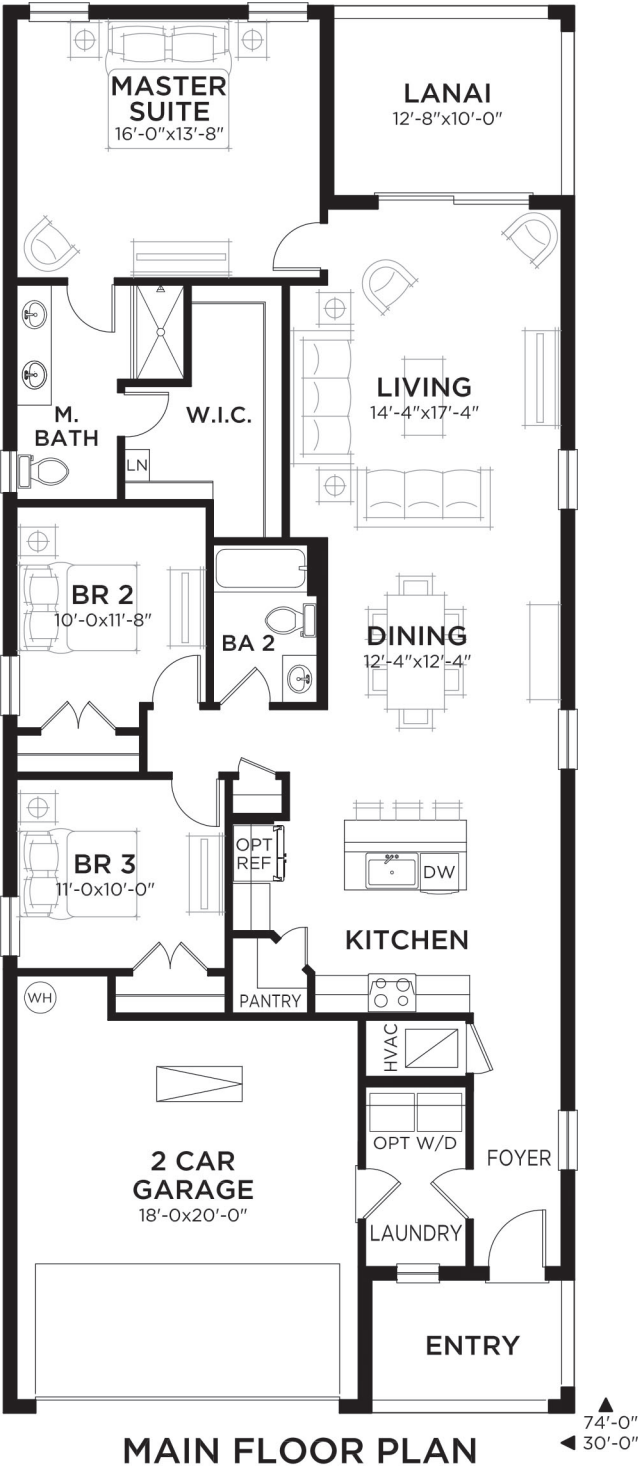
Color Scheme 14



# Magenta

3 bed • 2 bath • 2 car | 1,615 sq. ft.

WHY NOT START FRESH?



Area Schedule

Main Floor A/C	1615 SF
Garage	403 SF
Lanai	127 SF
Entry	75 SF
Total Area	2220 SF



# Turquesa

4 bed • 2.5 bath • 2 car | 2,038 sq. ft.

CASA *Fresca*  
HOMES®

WHY NOT START FRESH?



**Turquesa A**  
Color Scheme 11



**Turquesa B**  
Color Scheme 5



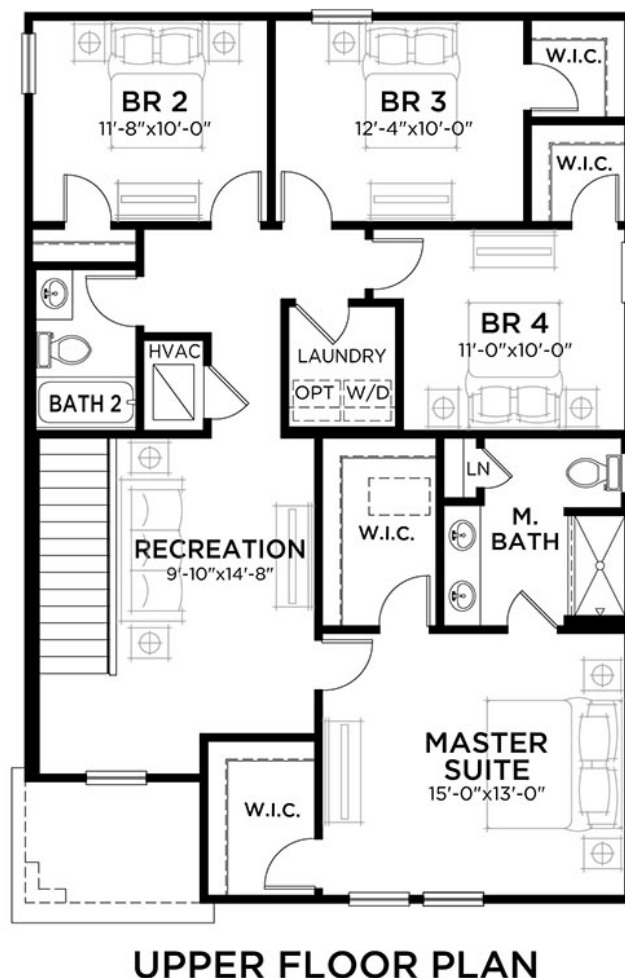
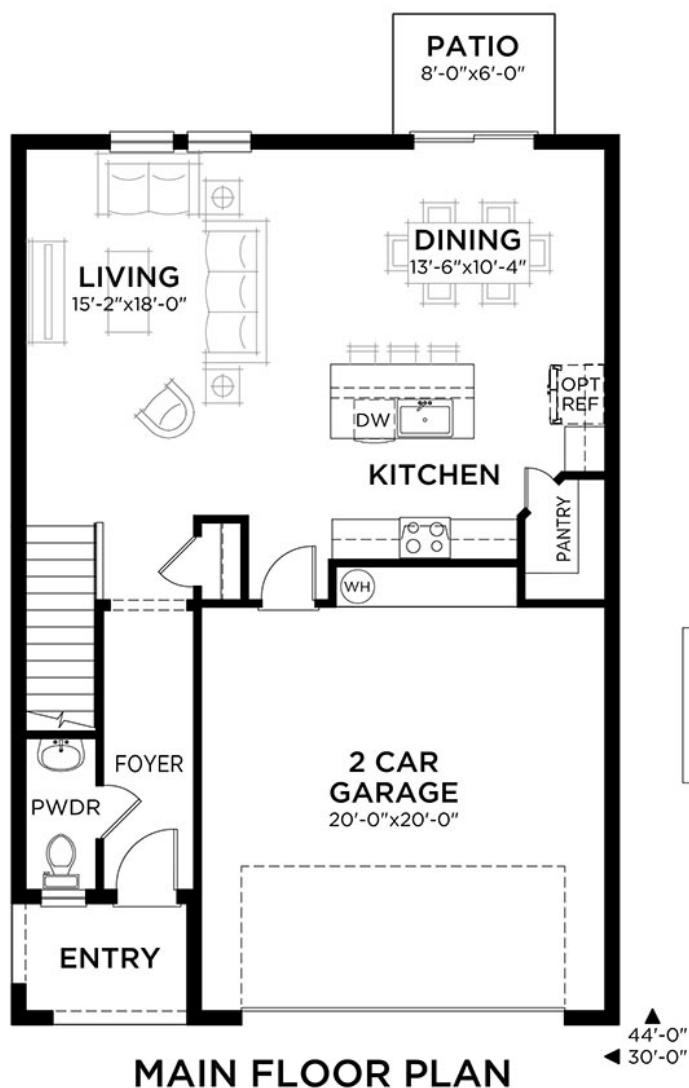
**Turquesa C**  
Color Scheme 13

# Turquesa

4 bed • 2.5 bath • 2 car | 2,038 sq. ft.

CASA *Fresca*  
HOMES®

WHY NOT START FRESH?



## Area Schedule

Main Floor A/C	819 SF
Upper Floor A/C	1219 SF
Total A/C	2038 SF
2 Car Garage	449 SF
Entry	52 SF
Total Area	2539 SF

Artist's conceptual rendering. Actual construction may vary in color, features, and dimensions. Availability, specifications, and pricing are subject to change without notice. All plans require developer approval and may be modified in order to comply with these developer requirements. Please speak with a Casa Fresca Sales Consultant for current information and about options where applicable. © 2019 Casa Fresca-Cool Homes, LLC. All Rights Reserved. Not an offer to purchase where prohibited by law. Broker Participation Welcome. CRC#1332421

hello@casafrescahomes.com  
CasaFrescaHomes.com





# Azure

4 bed • 2.5 bath • 2 car | 2,226 sq. ft.

CASA *Fresca*  
HOMES®

WHY NOT START FRESH?



**Azure A**  
Color Scheme 12



**Azure B**  
Color Scheme 10



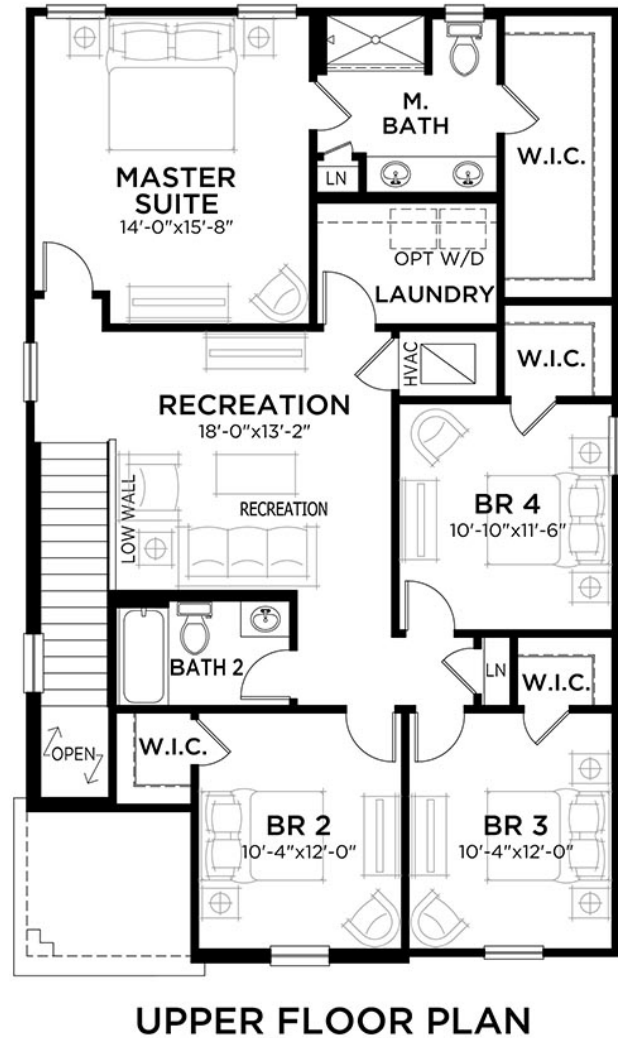
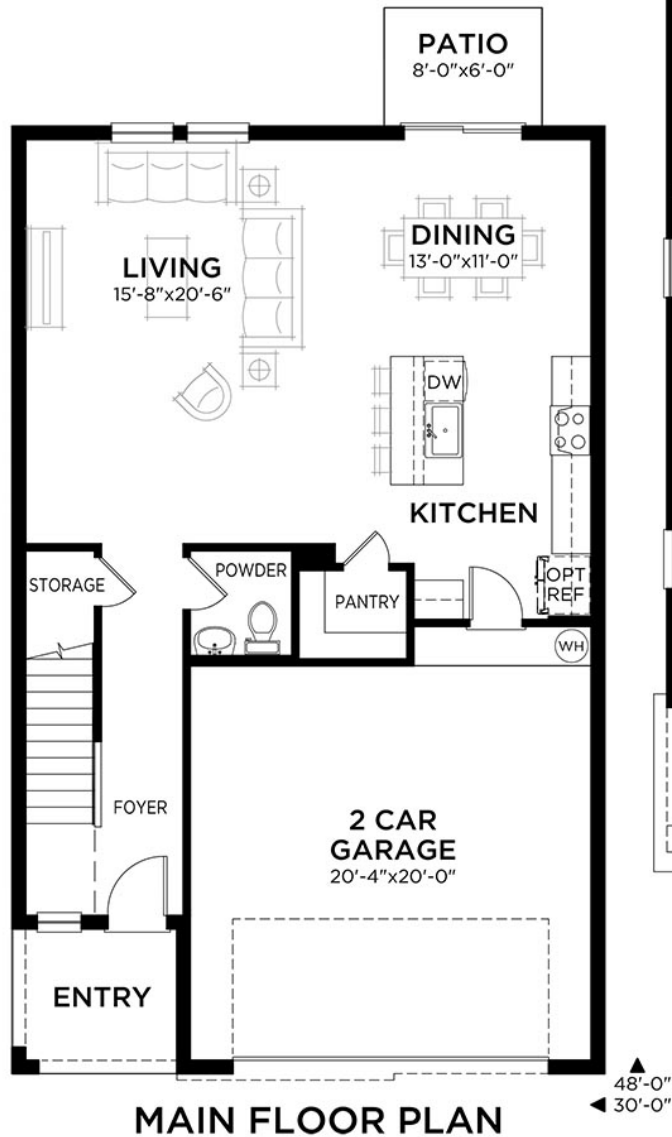
**Azure C**  
Color Scheme 1

# Azure

4 bed • 2.5 bath • 2 car | 2,226 sq. ft.

CASA *Fresca*  
HOMES®

WHY NOT START FRESH?



## Area Schedule

Main Floor A/C	921 SF
Upper Floor A/C	1305 SF
Total A/C	2226 SF
2 Car Garage	458 SF
Entry	61 SF
Total Area	2745 SF

Artist's conceptual rendering. Actual construction may vary in color, features, and dimensions. Availability, specifications, and pricing are subject to change without notice. All plans require developer approval and may be modified in order to comply with these developer requirements. Please speak with a Casa Fresca Sales Consultant for current information and about options where applicable. © 2019 Casa Fresca-Cool Homes, LLC. All Rights Reserved. Not an offer to purchase where prohibited by law. Broker Participation Welcome. CRC#1332421

hello@casafrescahomes.com  
CasaFrescaHomes.com





# Indigo

5 bed • 3 bath • 2 car | 2,471 sq. ft.

CASA *Fresca*  
HOMES®

WHY NOT START FRESH?



**Indigo A**  
Color Scheme 17



**Indigo B**  
Color Scheme 15



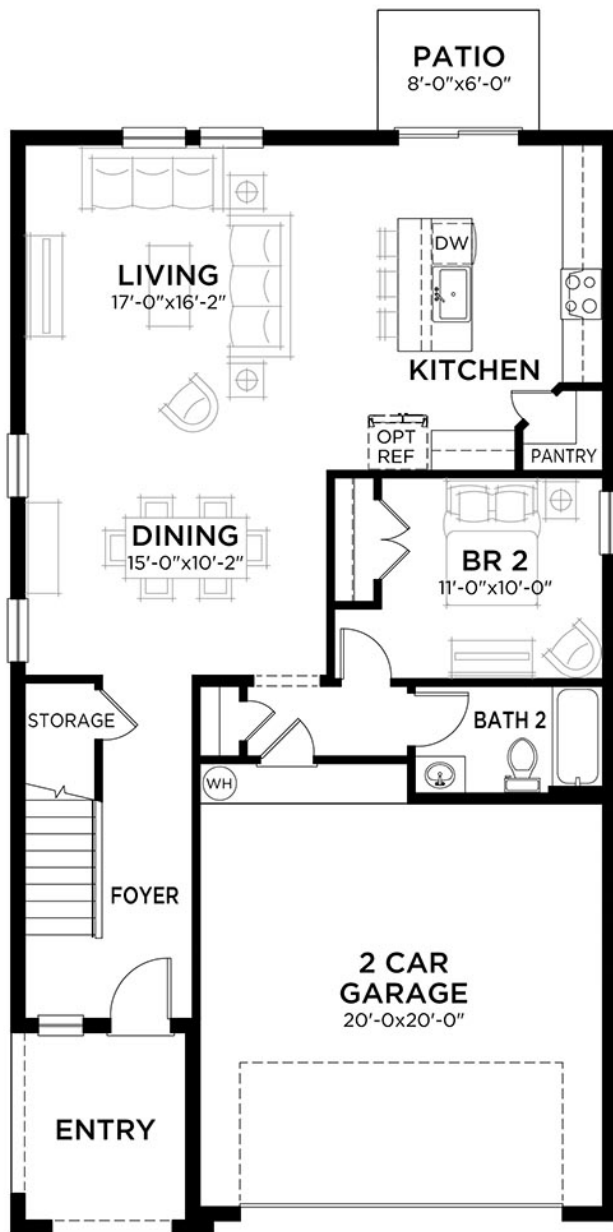
**Indigo C**  
Color Scheme 4

# Indigo

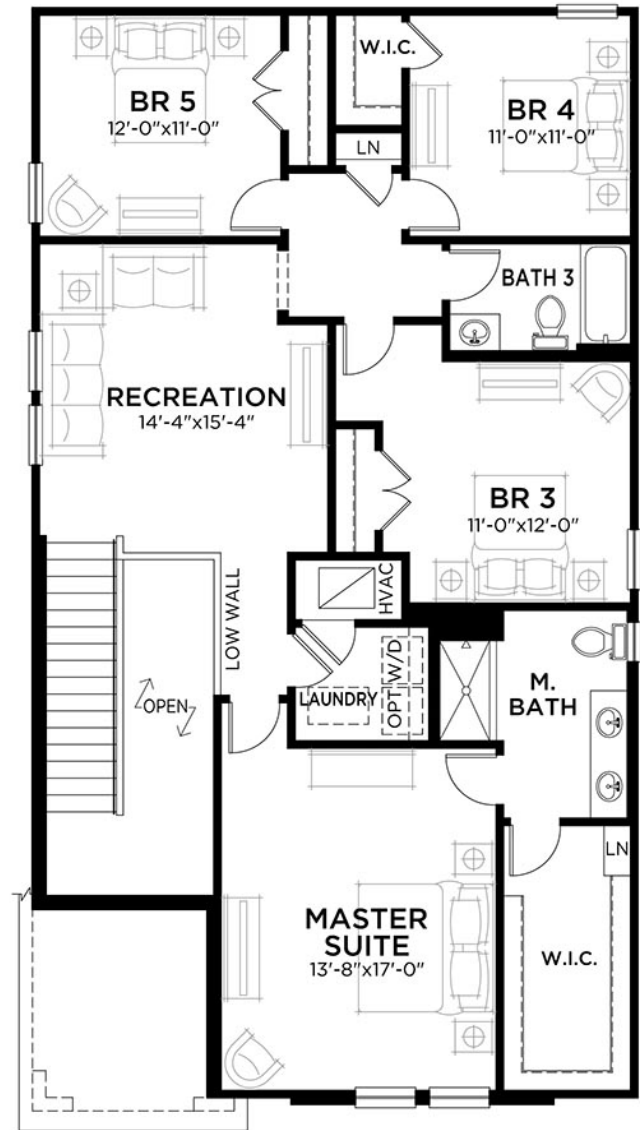
5 bed • 3 bath • 2 car | 2,471 sq. ft.

CASA *Fresca*  
HOMES®

WHY NOT START FRESH?



MAIN FLOOR PLAN



UPPER FLOOR PLAN

## Area Schedule

Main Floor A/C	1085 SF
Upper Floor A/C	1386 SF
<b>Total A/C</b>	<b>2471 SF</b>
2 Car Garage	454 SF
Entry	88 SF
<b>Total Area</b>	<b>3013 SF</b>