

Hawkstone

Preliminary Site Map



Site Map Legend

- 40' Wide Homesite
- 50' Wide Homesite
- * Model Home
- P Model Parking



CASA *Fresca*
HOMES.

WHY NOT START FRESH?



Bold Included Features

Interior Features

- Decorative 5 ¼" colonial baseboards
- Decorative 2 ¼" colonial door casing
- Shaw LVP flooring on first floor living areas
- Lever door hardware in brushed nickel
- Two square panel, smooth colonist doors
- Maintenance-free, ventilated shelving throughout
- Smoke and carbon monoxide detectors wired to electrical system with battery back-up
- Cat6 data outlet in Master Suite and Living Room
- Structured media enclosure in Master Suite closet
- Ceiling fan pre-wire, switched in Living Room, Recreation Room (per plan), and all Bedrooms
- Recessed LED flush mount light fixtures
- Decora lighting switches
- Carpets with 7/16" 5.5lbs foam pad
- Interior washer and dryer hookups

Kitchen Features

- 2cm quartz countertops (per Interior Design selection)
- Spacious island workspace (per plan)
- Island seating area (per plan)
- Pull out Trash Drawer in Kitchen island.
- Shaw LVP flooring in Kitchen
- Designer recessed panel cabinets, with soft closing doors and drawers, hardware with 42" upper cabinets and crown molding
- Sterling by Kohler premium 18-gauge, undermount, single bowl stainless-steel sink, 9-5/16" deep with SilentShield® sound-absorption technology
- Moen "Arbor" single handle with pullout spray faucet in spot resist stainless finish finish
- GE self-cleaning stainless-steel slide-in gas range
- GE direct vent stainless-steel microwave
- GE high-efficiency Energy Star stainless-steel dishwasher
- Moen 1/3 hp garbage disposal
- Oversized, walk-in pantry with 5 rows of shelving (per plan) and Butler's pantry (per plan)
- Recessed LED flush mount light fixtures

Bathroom Features

- Spacious walk-in closets (per plan)
- Shaw LVP flooring
- 2.0 cm quartz countertops
- Mirrors with vanity lighting w/ recessed LED flush mount bulbs
- Moen "Genta" single handle faucets in brushed nickel
- Rectangular undermount sinks
- Sterling by Kohler elongated commode
- Ceiling height tile shower surrounds with tile shower floors
- Shower seats (per plan).
- Semi-frameless shower enclosures (not included with tubs)
- Stand alone Tub in master bath (per plan)
- Designer recessed panel cabinets, with soft closing doors and drawers with hardware
- Spacious linen closets (per plan)

Exterior Features

- Attractive and architecturally authentic elevations with textured stucco and fiber cement siding systems
- Stylish exterior front door hardware with handleset and smart lock.
- Insulated 2 Square panel fiberglass 8' 0" front door and 8'0" sliding glass rear door (per plan)
- Non-slip concrete driveways, lead walk, porch and/or entryway
- Architectural dimensional 30-year shingle roof
- High quality acrylic exterior paint
- Raised panel reinforced decorative garage doors
- Smart garage door opener with 1 remote
- Low-E, insulated, argon-filled sliding glass doors (per plan)
- Professionally designed landscape packages
- Water-conserving irrigation systems
- Weather resistant acrylic paint on front porch and rear patio (per plan)
- Private, 2-car or 3-car garage (per plan)
- Exterior hose bibb at garage and rear of home

Energy Saving Features

- High efficiency air conditioning system with SEER2 ratings that meets or exceeds current building codes
- Energy efficient range and heating system
- Carrier® ecobee™ SmartThermostat Pro with voice control
- LED flush mount light fixtures
- Energy efficient LED lightbulbs
- R-4.1 insulated block walls
- R-13 insulation in exterior framed walls
- R-30 batt/blown ceiling insulation over conditioned space
- Insulated AC ductwork hard-sealed with mastic
- Energy efficient tankless gas water heater
- Air infiltration barrier between framing and drywall

Construction & Customer Care

- One-year non-transferable performance guarantee (subject to normal wear and tear)
- Four scheduled meetings with your Casa Fresca Construction Manager to learn about your new home
- First floor concrete block construction with poured, reinforced concrete cells
- Low-maintenance soffit and fascia
- 150 or 200 amp electrical service (per plan)
- BoraCare termite treatment
- Taexx built-in "tubes in the wall" pest control system

Standard Included Features

WHY NOT START FRESH?

Interior Features

- Decorative 3 ¼" colonial baseboards
- Decorative 2 ¼" colonial door casing
- Shaw LVP flooring on first floor living areas
- Ball knob door hardware in brushed nickel
- Six panel, wood-grain texture colonist doors
- Maintenance-free, ventilated shelving throughout
- Smoke and carbon monoxide detectors wired to electrical system with battery back-up
- Cat6 data outlet in Master Suite and Living Room
- Structured media enclosure in Master Suite closet
- Ceiling fan pre-wire, switched in Living Room, Recreation Room (per plan), and all Bedrooms
- Recessed LED flush mount light fixtures
- Decora lighting switches
- Carpets with 7/16" 5.5lbs foam pad
- Interior washer and dryer hook-up with vent to the exterior
- White 2" faux wood window blinds

Kitchen Features

- 1.6cm quartz countertops (per Interior Design selection)
- Spacious island workspace (per plan)
- Island seating area (per plan)
- Shaw LVP flooring in Kitchen
- Designer recessed panel cabinets, with hidden hinges and hardware with 30" upper cabinets
- Sterling by Kohler premium 18-gauge, undermount, single bowl stainless-steel sink, 9-5/16" deep with SilentShield® sound-absorption technology
- Moen "Method" single handle with pullout spray faucet in polished chrome finish
- GE self-cleaning stainless-steel gas range
- GE recirculating stainless-steel microwave
- GE high-efficiency Energy Star stainless-steel dishwasher
- Moen 1/3 hp garbage disposal
- Oversized, walk-in pantry with 5 rows of shelving (per plan)
- Recessed LED flush mount light fixtures

Bathroom Features

- Spacious walk-in closets (per plan)
- Shaw LVP flooring
- 1.6cm quartz countertops
- Mirrors with vanity lighting w/ recessed LED flush mount bulbs
- Moen "Chateau" single handle faucets in polished chrome finish
- Top mounted china sinks
- Sterling by Kohler pedestal sink (per plan)
- Sterling by Kohler elongated commode
- Sterling by Kohler "Vikrell®" shower pan and/or tub and wall surrounds
- Designer recessed panels cabinet with hardware and hidden hinges
- Spacious linen closets (per plan)

Exterior Features

- Attractive and architecturally authentic elevations with textured stucco and fiber cement siding systems
- Stylish exterior front door hardware with deadbolt in brushed nickel
- Insulated 6 panel fiberglass 6' 8" front and rear door (per plan)
- Non-slip concrete driveways, lead walk, porch and/or entryway
- Architectural dimensional 30-year shingle roof
- PPG high quality acrylic exterior paint
- Raised panel reinforced decorative garage doors
- Automatic garage door opener with two remotes
- Low-E, insulated, argon-filled sliding glass doors (per plan)
- Professionally designed landscape packages
- Water-conserving irrigation systems
- Weather resistant acrylic paint on front porch and rear patio (per plan)
- Private, 2-car or 3-car garage (per plan)
- Exterior hose bibb at garage and rear of home

Energy Saving Features

- High efficiency air conditioning system with SEER2 ratings that meets or exceeds current building codes
- Energy efficient range and heating system
- Carrier® ecobee™ SmartThermostat Pro with voice control
- LED flush mount light fixtures
- Energy efficient LED lightbulbs
- R-4.1 insulated block walls
- R-13 insulation in exterior framed walls
- R-30 batt/blown ceiling insulation over conditioned space
- Insulated AC ductwork hard-sealed with mastic
- Energy efficient tankless gas water heater
- Air infiltration barrier between framing and drywall

Construction & Customer Care

- One-year non-transferable performance guarantee (subject to normal wear and tear)
- Four scheduled meetings with your Casa Fresca Construction Manager to learn about your new home
- First floor concrete block construction with poured, reinforced concrete cells
- Low-maintenance soffit and fascia
- 150 or 200 amp electrical service (per plan)
- BoraCare termite treatment
- Taexx built-in "tubes in the wall" pest control system

Alicante

3 bed • 2 bath • 2 car | 1,638 sq. ft.

WHY NOT START FRESH?



Alicante A
Color Scheme 12



Alicante B
Color Scheme 14



Alicante C
Color Scheme 1

Alicante

3 bed • 2 bath • 2 car | 1,638 sq. ft.

CASA *Fresca*
HOMES®

WHY NOT START FRESH?



Alicante D
Color Scheme 4



Alicante E
Color Scheme 2



Alicante F
Color Scheme 17

Alicante

3 bed • 2 bath • 2 car | 1,638 sq. ft.

WHY NOT START FRESH?



MAIN FLOOR PLAN

Area Schedule

Main Floor A/C	1638 SF
Garage	402 SF
Lanai	127 SF
Entry	110 SF
Total Area	2277 SF



Cordoba

4 bed • 2.5 bath • 2 car | 2,057 sq. ft.

CASA *Fresca*
HOMES®

WHY NOT START FRESH?



Cordoba A
Color Scheme 10



Cordoba B
Color Scheme 5



Cordoba C
Color Scheme 13

Cordoba

4 bed • 2.5 bath • 2 car | 2,057 sq. ft.

WHY NOT START FRESH?



Area Schedule

Main Floor A/C	829 SF
Upper Floor A/C	1228 SF
Total A/C	2057 SF
2 Car Garage	448 SF
Entry	43 SF
Total Area	2548 SF



Marbella

4 bed • 2.5 bath • 2 car | 2,257 sq. ft.

CASA *Fresca*
HOMES®

WHY NOT START FRESH?



Marbella A
Color Scheme 3



Marbella B
Color Scheme 16



Marbella C
Color Scheme 7

Marbella

4 bed • 2.5 bath • 2 car | 2,257 sq. ft.

WHY NOT START FRESH?



Area Schedule

Main Floor A/C	942 SF
Upper Floor A/C	1315 SF
Total A/C	2257 SF
2 Car Garage	457 SF
Entry	42 SF
Total Area	2756 SF



Seville

5 bed • 3 bath • 2 car | 2,512 sq. ft.

CASA *Fresca*
HOMES®

WHY NOT START FRESH?



Seville A
Color Scheme 1



Seville B
Color Scheme 11



Seville C
Color Scheme 4

Seville

5 bed • 3 bath • 2 car | 2,512 sq. ft.

WHY NOT START FRESH?



54'-8"
30'-0"



Area Schedule

Main Floor A/C	1126 SF
Upper Floor A/C	1386 SF
Total A/C	2512 SF
2 Car Garage	451 SF
Entry	50 SF
Total Area	3013 SF



Valencia

5 bed • 3 bath • 2 car | 3,011 sq. ft.

CASA *Fresca*
HOMES®

WHY NOT START FRESH?



Valencia A
Color Scheme 12



Valencia B
Color Scheme 5

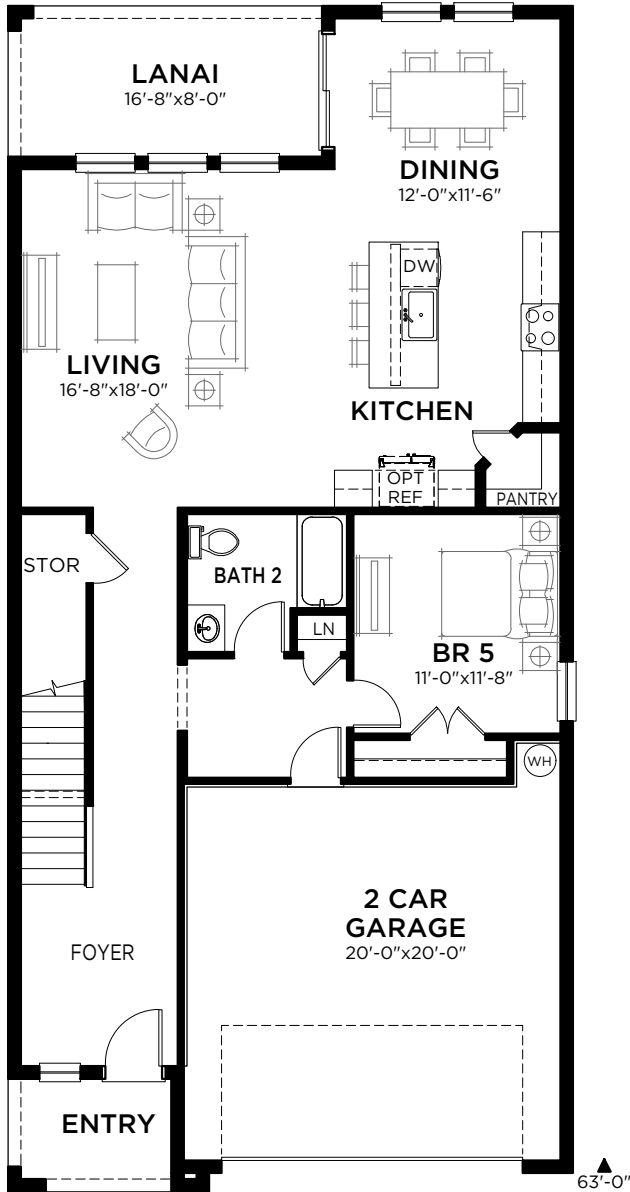


Valencia C
Color Scheme 8

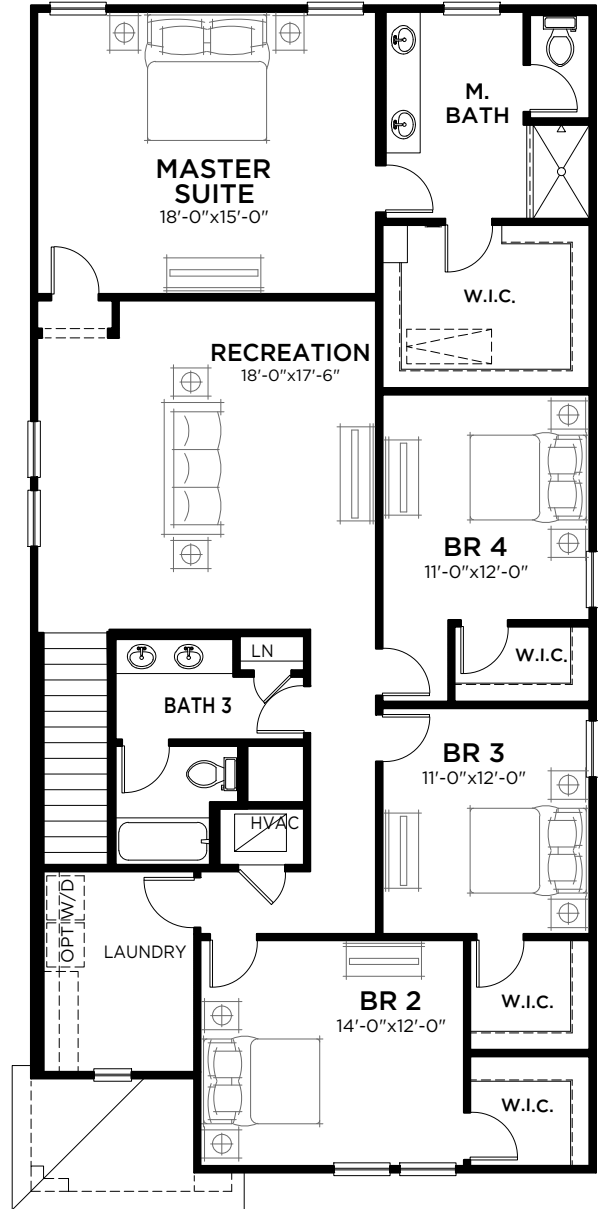
Valencia

5 bed • 3 bath • 2 car | 3,011 sq. ft.

WHY NOT START FRESH?



MAIN FLOOR PLAN



UPPER FLOOR PLAN

Area Schedule

Main Floor A/C	1246 SF
Upper Floor A/C	1765 SF
Total A/C	3011 SF
2 Car Garage	438 SF
Lanai	133 SF
Entry	54 SF
Total Area	3636 SF



Adora

3 bed • 2 bath • 2 car | 1,420 sq. ft.

CASA *Fresca*
HOMES®

WHY NOT START FRESH?



Adora A
Color Scheme 8



Adora B
Color Scheme 11



Adora C
Color Scheme 17

Adora

3 bed • 2 bath • 2 car | 1,420 sq. ft.

WHY NOT START FRESH?



Area Schedule

Main Floor A/C	1420 SF
Garage	395 SF
Lanai	105 SF
Entry	40 SF
Total Area	1960 SF

Valeria

4 bed • 2 bath • 2 car | 1,850 sq. ft.

CASA *Fresca*
HOMES®

WHY NOT START FRESH?



Valeria A
Color Scheme 12



Valeria B
Color Scheme 13

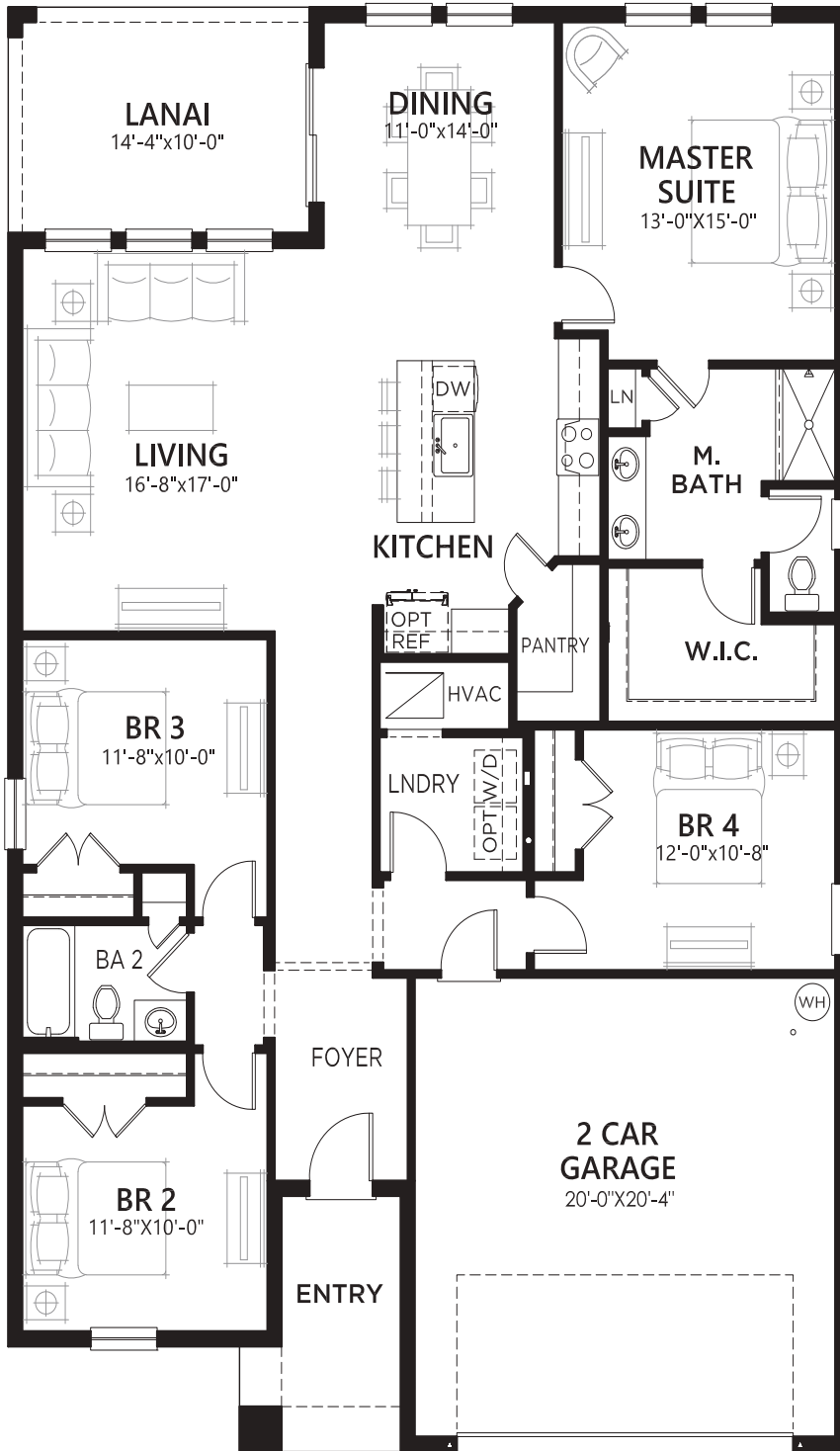


Valeria C
Color Scheme 1

Valeria

4 bed • 2 bath • 2 car | 1,850 sq. ft.

WHY NOT START FRESH?



MAIN FLOOR PLAN

▲ 64'-0"
◀ 40'-0"

Area Schedule

Main Floor A/C	1850 SF
Garage	442 SF
Lanai	143 SF
Entry	74 SF
Total Area	2509 SF

Lucia

5 bed • 3 bath • 2 car | 2,420 sq. ft.

CASA *Fresca*
HOMES®

WHY NOT START FRESH?



Lucia A
Color Scheme 4



Lucia B
Color Scheme 13

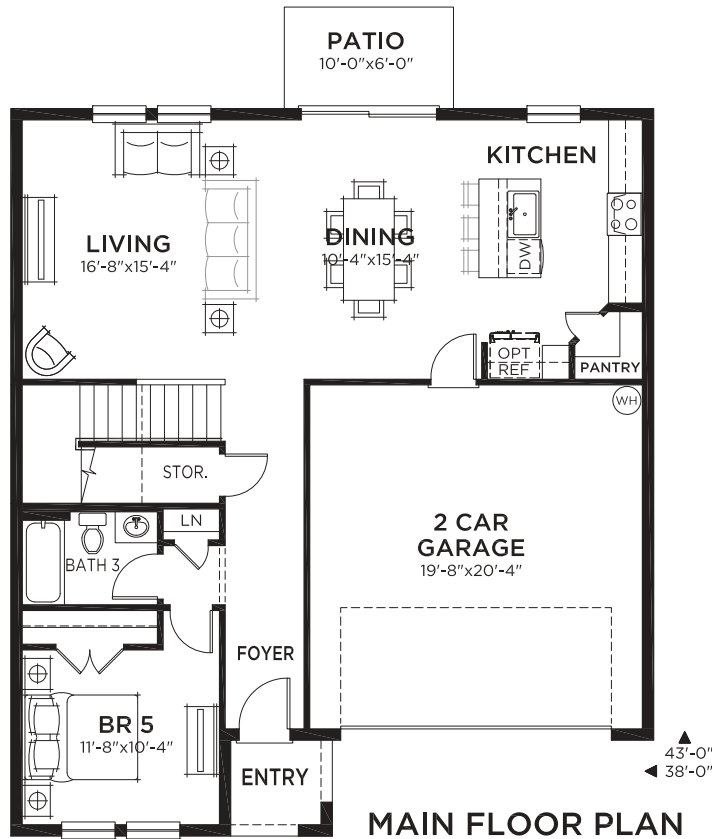
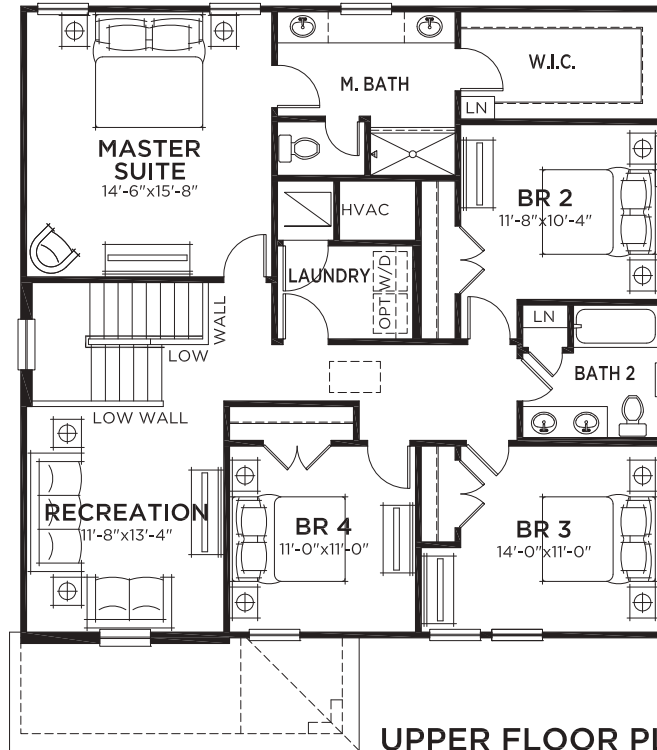


Lucia C
Color Scheme 5

Lucía

5 bed • 3 bath • 2 car | 2,420 sq. ft.

WHY NOT START FRESH?



Area Schedule

Main Floor A/C	1065 SF
Upper Floor A/C	1355 SF
Total A/C	2420 SF
2 Car Garage	427 SF
Entry	34 SF
Total Area	2881 SF



Catalina

5 bed • 3 bath • 2 car | 2,892 sq. ft.

CASA *Fresca*
HOMES®

WHY NOT START FRESH?



Catalina A
Color Scheme 8



Catalina B
Color Scheme 15



Catalina D
Color Scheme 12

Catalina

5 bed • Den • 3 bath • 2 car | 2,892 sq. ft.

WHY NOT START FRESH?



UPPER FLOOR PLAN



MAIN FLOOR PLAN

Area Schedule

Main Floor A/C	1318 SF
Upper Floor A/C	1574 SF
Total A/C	2892 SF
2 Car Garage	435 SF
Entry	57 SF
Total Area	3384 SF



Gabriela

5 bed • 3.5 bath • 3 car | 3,182 sq. ft.

CASA *Fresca*
HOMES®

WHY NOT START FRESH?



Gabriela A
Color Scheme 8



Gabriela B
Color Scheme 17



Gabriela C
Color Scheme 9

Mariana

6 bed • 3.5 bath • 3 car | 3,817 sq. ft.

CASA *Fresca*
HOMES.

WHY NOT START FRESH?



Mariana A
Color Scheme 2



Mariana B
Color Scheme 15

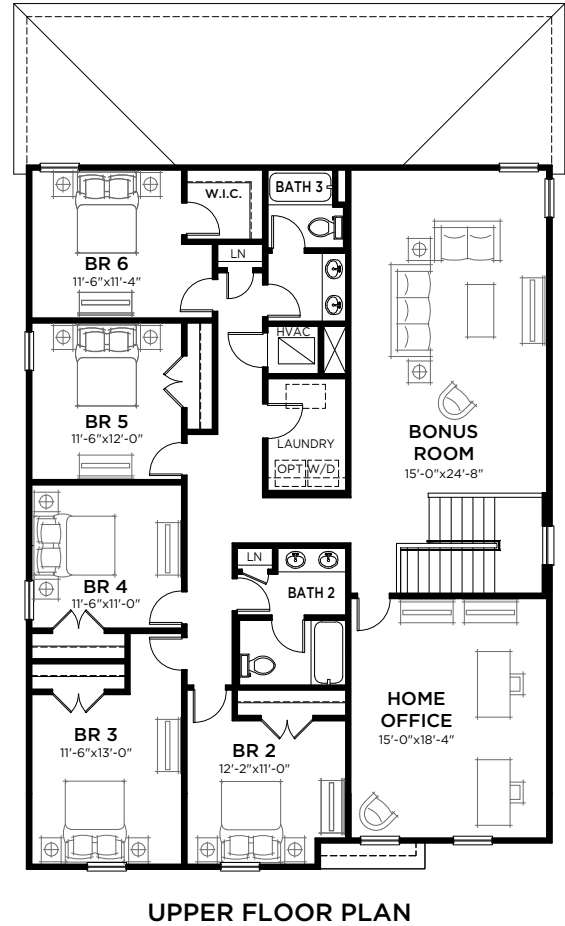
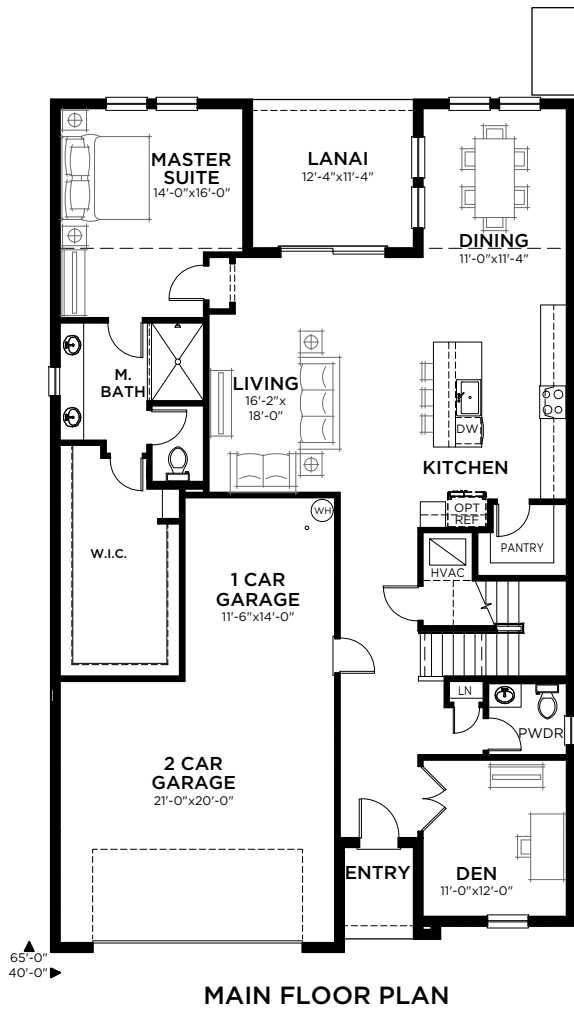


Mariana C
Color Scheme 6

Mariana

6 bed • 3.5 bath • 3 car | 3,817 sq. ft.

WHY NOT START FRESH?



Area Schedule

Main Floor A/C	1782 SF
Upper Floor A/C	2035 SF
Total A/C	3817 SF
2 Car Garage	610 SF
Lanai	140 SF
Entry	39 SF
Total Area	4606 SF

Amelia

5 bed • 3 bath • 2 car | 2,723 sq. ft.

CASA *Fresca*
HOMES®

WHY NOT START FRESH?



Amelia A
Color Scheme B14



Amelia B
Color Scheme B11

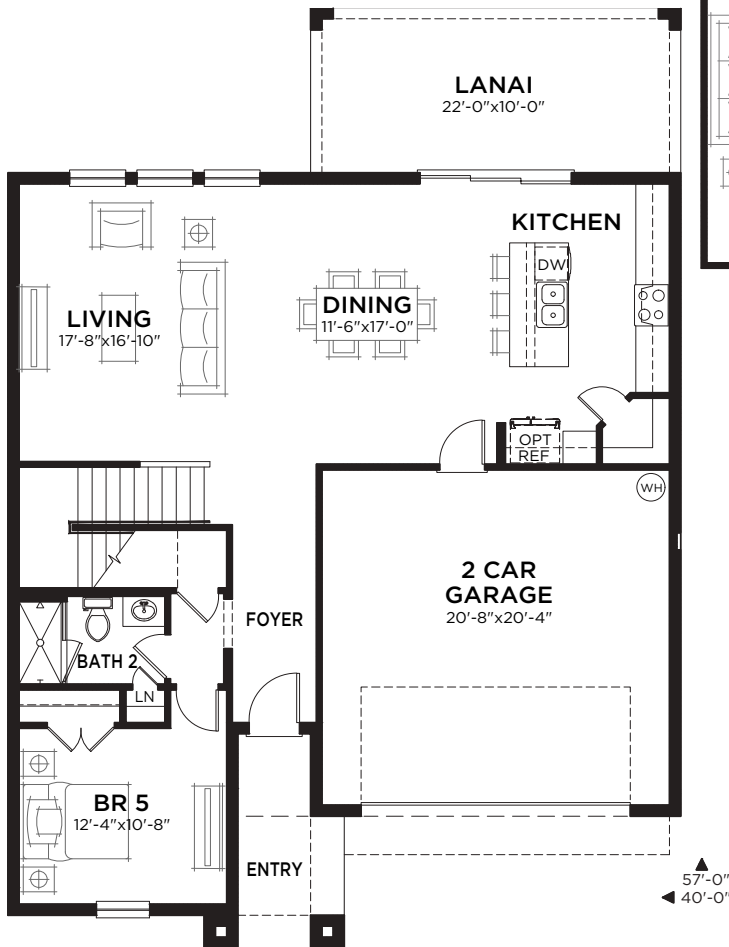


Amelia C
Color Scheme B07

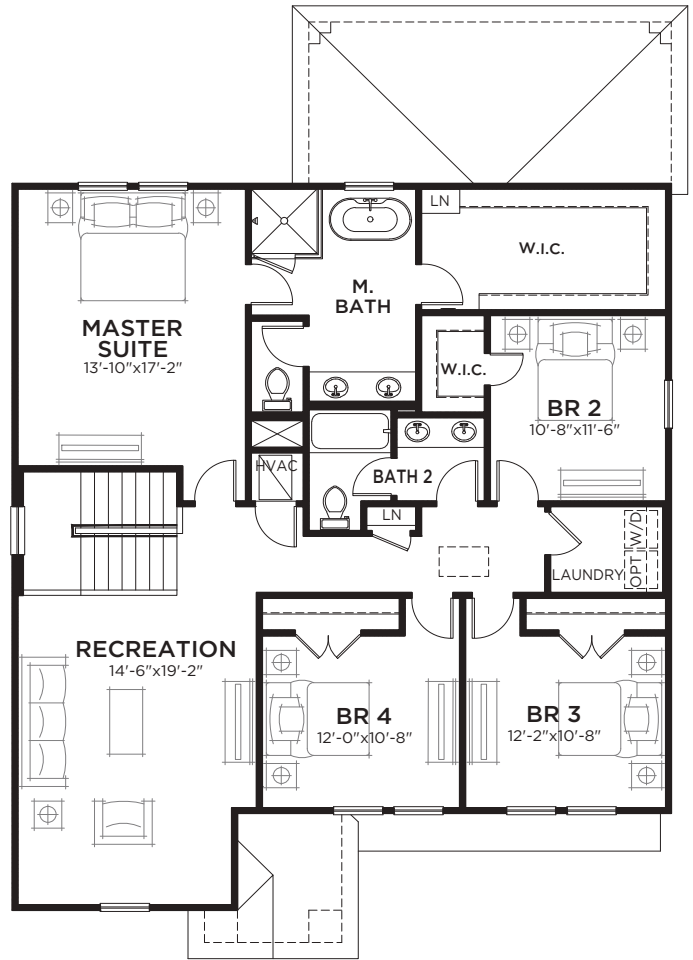
Amelia

5 bed • 3 bath • 2 car | 2,723 sq. ft.

WHY NOT START FRESH?



MAIN FLOOR PLAN



UPPER FLOOR PLAN

Area Schedule

Main Floor A/C	1154 SF
Upper Floor A/C	1569 SF
TOTAL A/C	2723 SF
2 Car Garage	466 SF
Lanai	220 SF
Entry	76 SF
Total Area	3485 SF



Anna Maria

5 bed • 3 bath • 2 car | 3,040 sq. ft.

CASA *Fresca*
HOMES®

WHY NOT START FRESH?



Anna Maria A
Color Scheme B15



Anna Maria B
Color Scheme B09

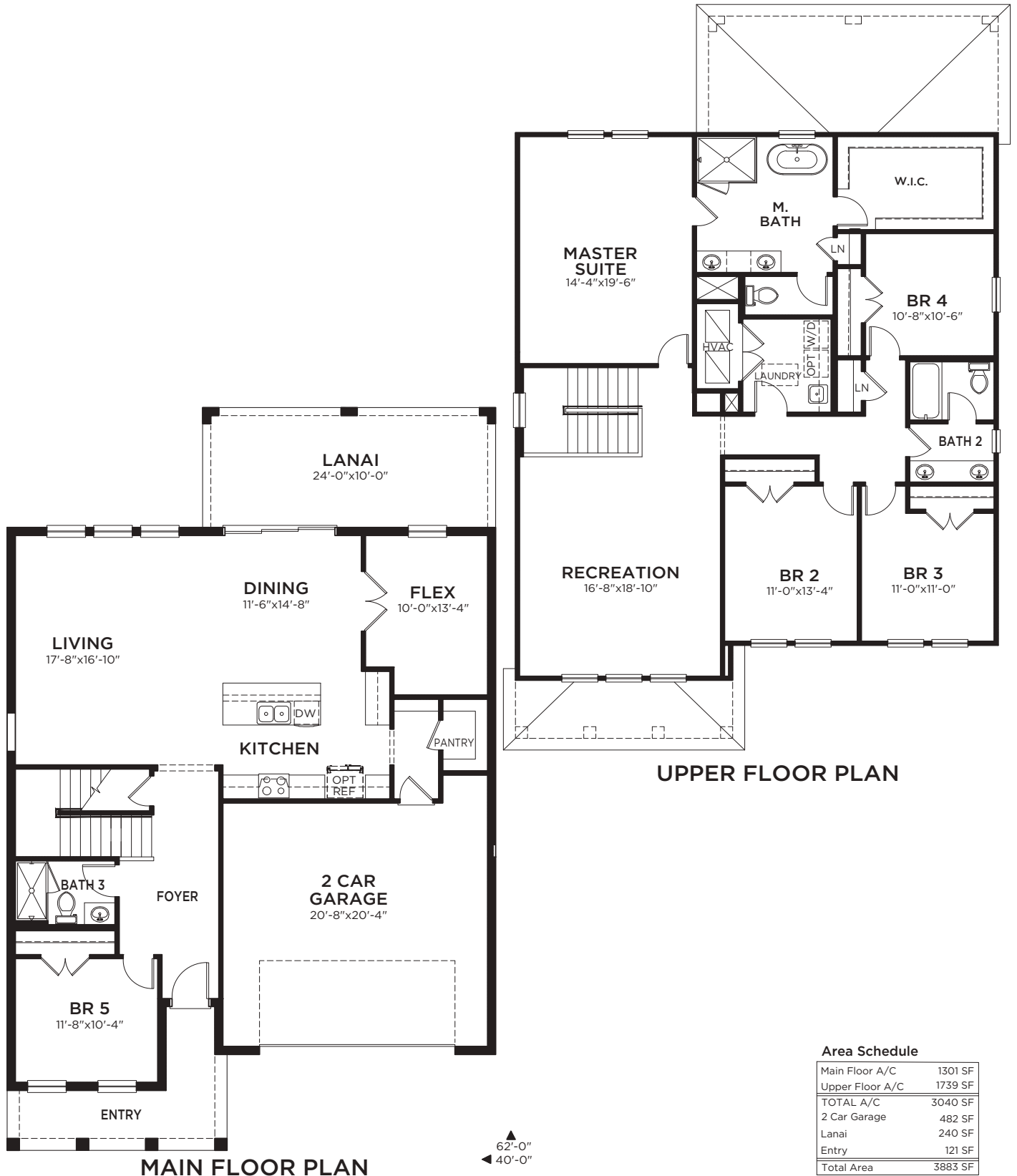


Anna Maria C
Color Scheme B17

Anna Maria

5 bed • 3 bath • 2 car | 3,040 sq. ft.

WHY NOT START FRESH?



Area Schedule

Main Floor A/C	1301 SF
Upper Floor A/C	1739 SF
TOTAL A/C	3040 SF
2 Car Garage	482 SF
Lanai	240 SF
Entry	121 SF
Total Area	3883 SF



Bahia

3 bed • 2 bath • 2 car | 1,699 sq. ft.

WHY NOT START FRESH?



Bahia A
Color Scheme B14



Bahia B
Color Scheme B17

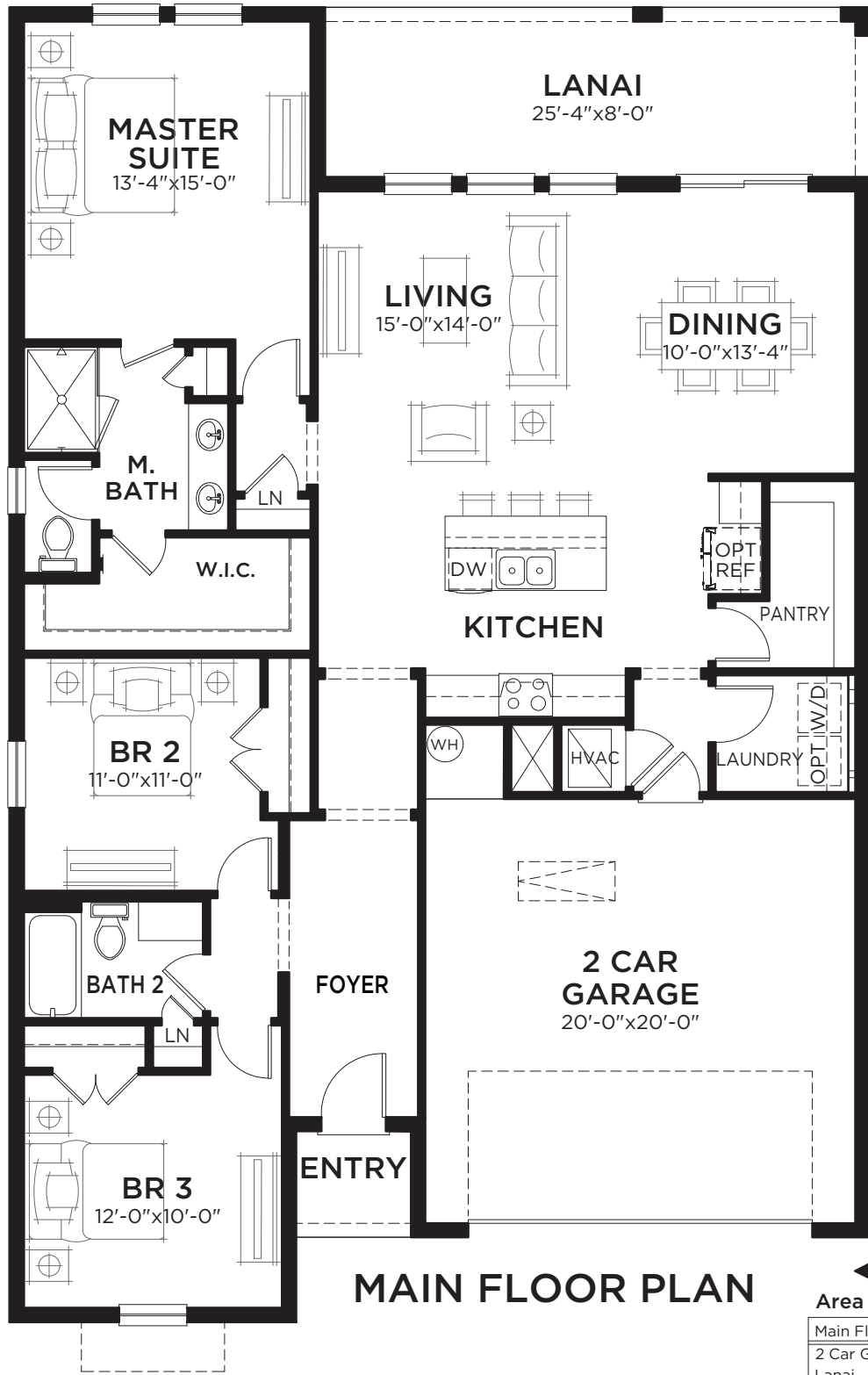


Bahia C
Color Scheme B07

Bahia

3 bed • 2 bath • 2 car | 1,699 sq. ft.

WHY NOT START FRESH?



MAIN FLOOR PLAN

▲ 62'-0"
◀ 40'-0"

Area Schedule

Main Floor A/C	1699 SF
2 Car Garage	444 SF
Lanai	203 SF
Entry	27 SF
Total Area	2373 SF

Calusa

4 bed • 3 bath • 2 car | 1,985 sq. ft.

CASA *Fresca*
HOMES®

WHY NOT START FRESH?



Calusa A
Color Scheme B20



Calusa B
Color Scheme B13



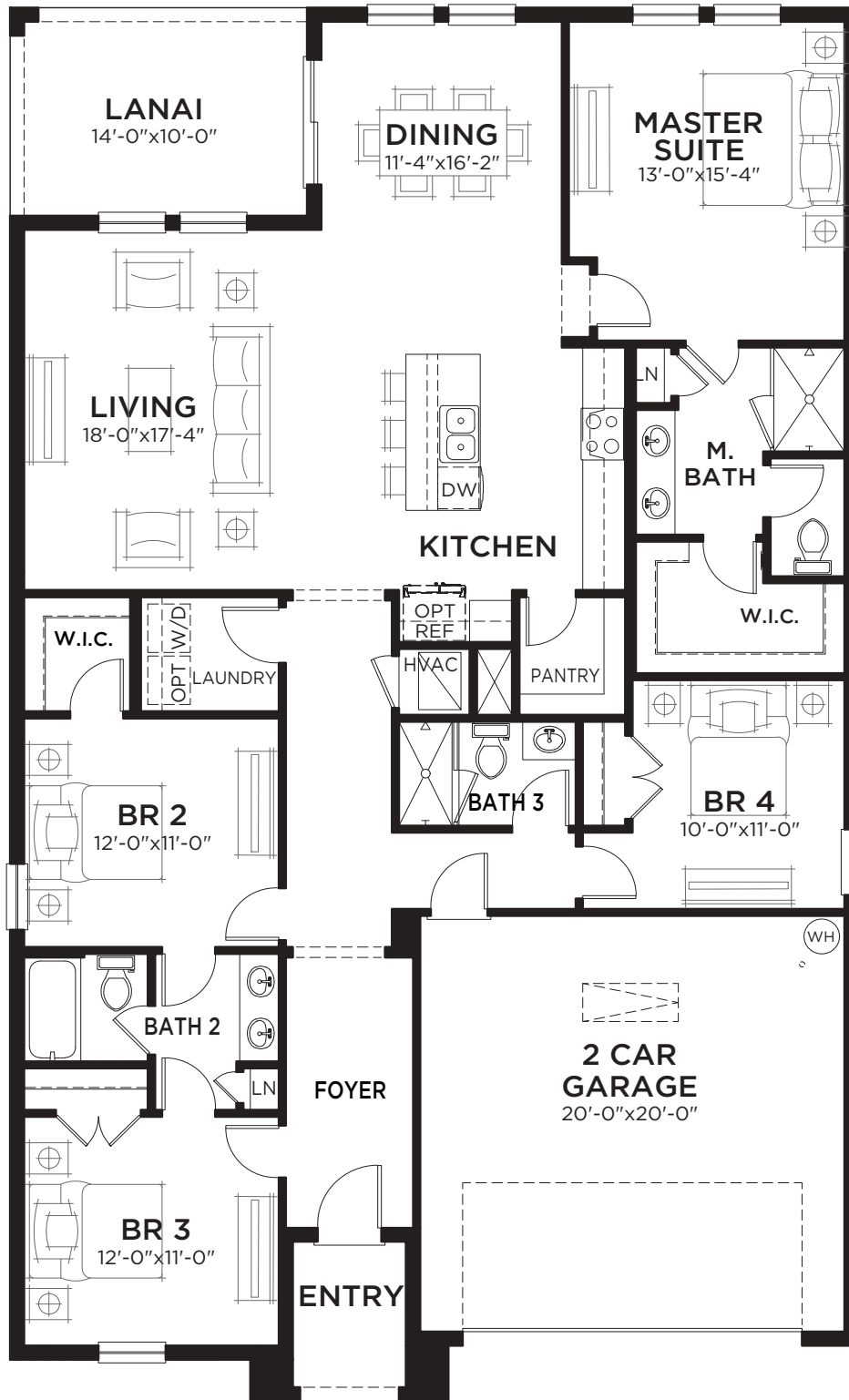
Calusa C
Color Scheme B11



Calusa

4 bed • 3 bath • 2 car | 1,985 sq. ft.

WHY NOT START FRESH?



MAIN FLOOR PLAN

▲ 67'-0"
◀ 30'-0"

Area Schedule

Main Floor A/C	1985 SF
TOTAL A/C	1985 SF
2 Car Garage	430 SF
Lanai	140 SF
Entry	50 SF
Total Area	2605 SF



Coquina

5-6 bed • 4 bath • 3 car | 3,364 sq. ft.

CASA *Fresca*
HOMES®

WHY NOT START FRESH?



Coquina A
Color Scheme B12



Coquina B
Color Scheme B17

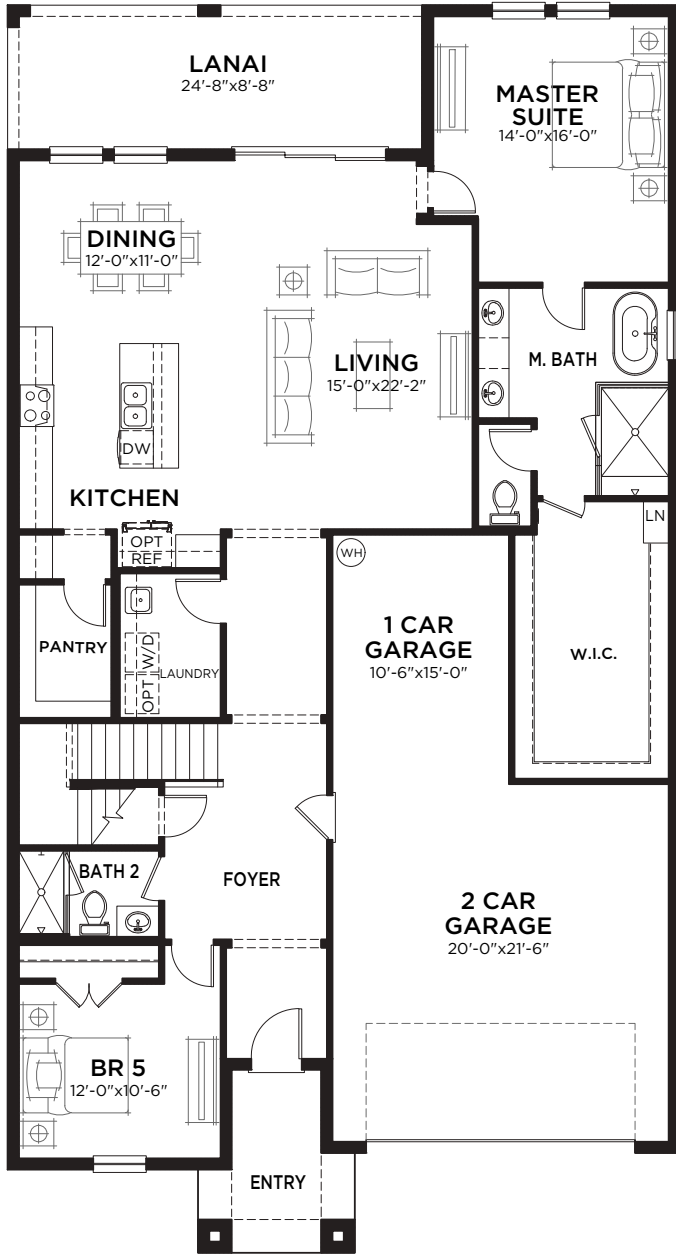


Coquina C
Color Scheme B13

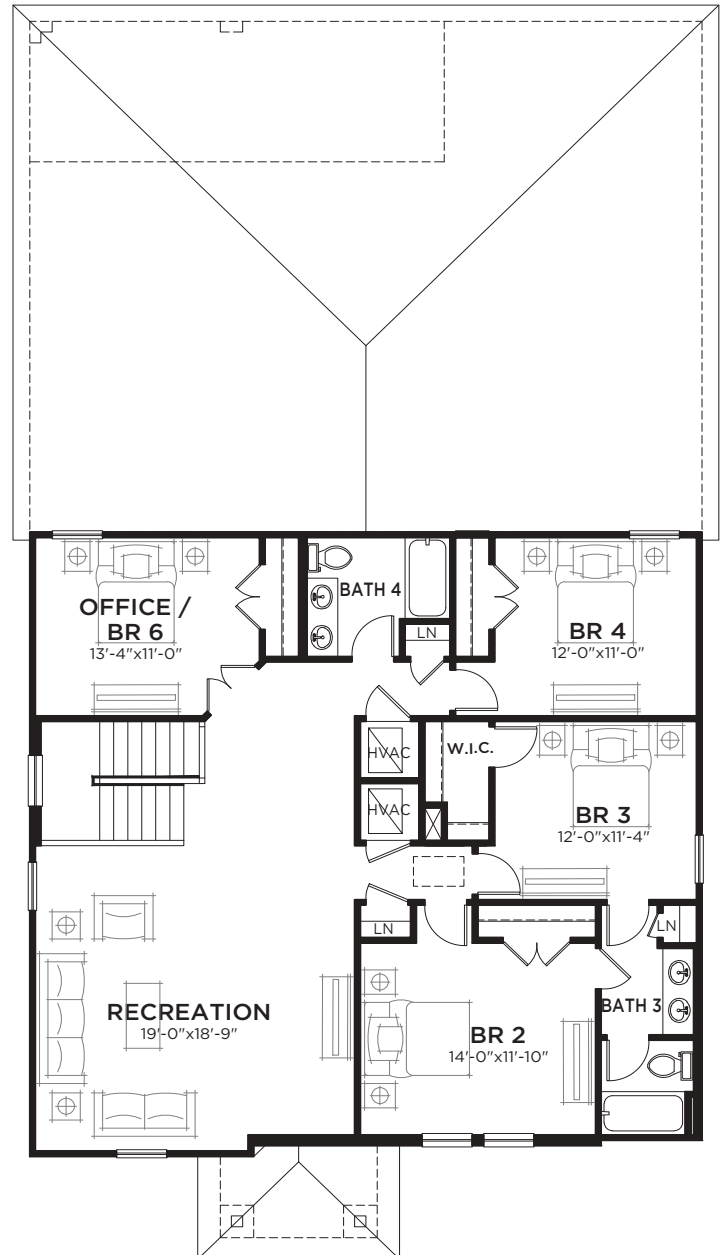
Coquina

5-6 bed • 4 bath • 3 car | 3,364 sq. ft.

WHY NOT START FRESH?



MAIN FLOOR PLAN



UPPER FLOOR PLAN

Area Schedule

Main Floor A/C	1914 SF
Upper Floor A/C	1450 SF
TOTAL A/C	3364 SF
2 Car Garage	619 SF
Lanai	214 SF
Entry	81 SF
Total Area	4278 SF



Lido

5 bed • 3 bath • 3 car | 3,164 sq. ft.

WHY NOT START FRESH?



Lido A
Color Scheme B10



Lido B
Color Scheme B05

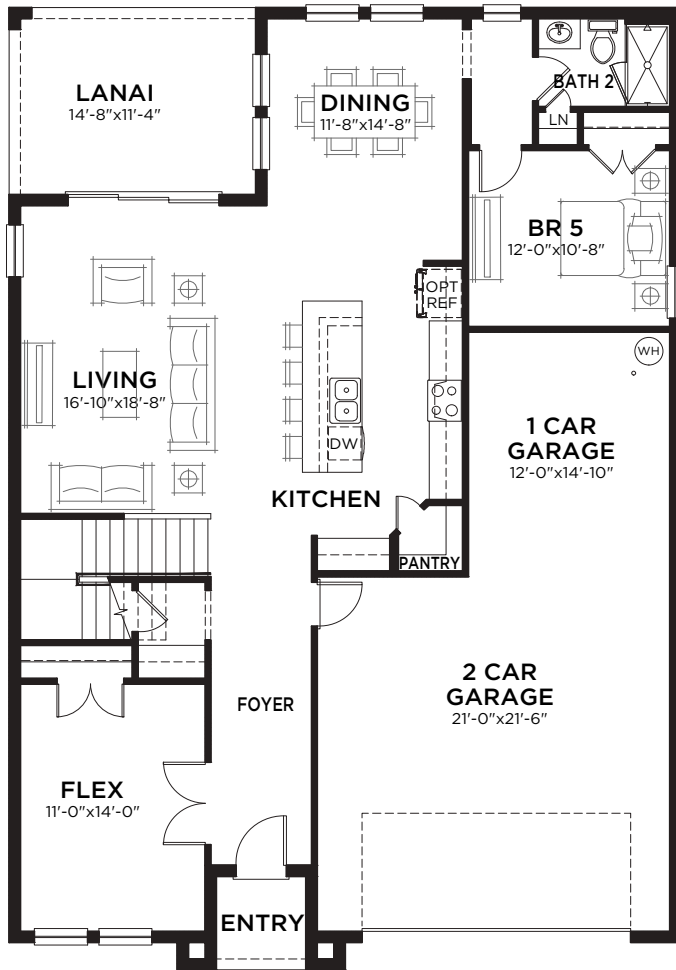


Lido C
Color Scheme B14

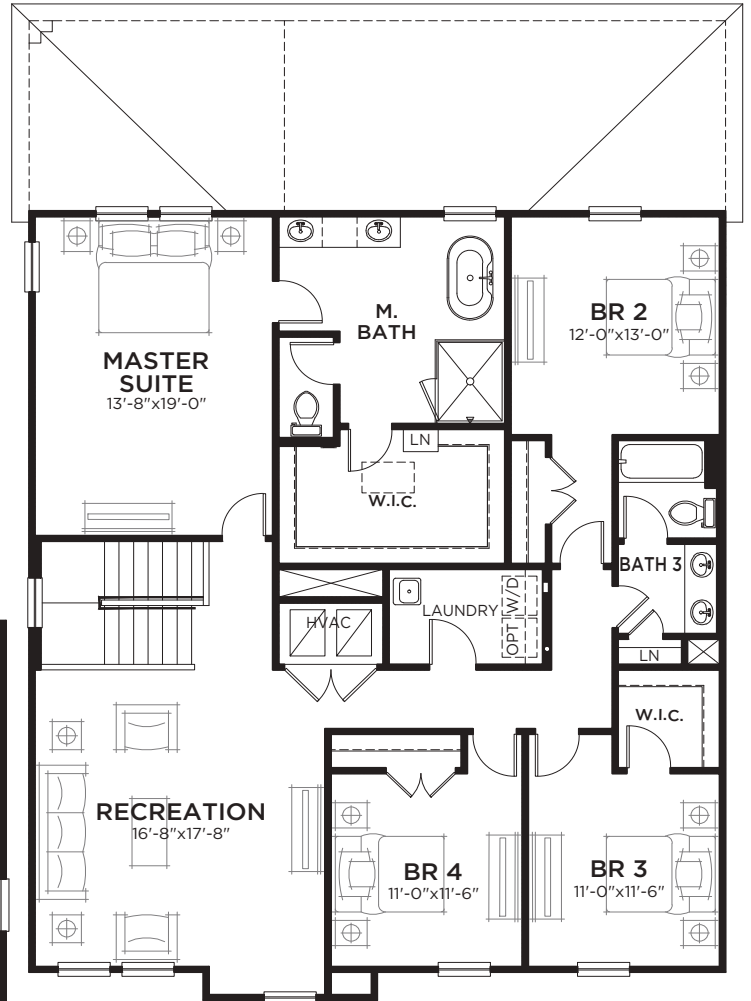
Lido

5 bed • 3 bath • 3 car | 3,164 sq. ft.

WHY NOT START FRESH?



MAIN FLOOR PLAN



UPPER FLOOR PLAN

▲ 58'-4"
◀ 40'-0"

Area Schedule

Main Floor A/C	1408 SF
Upper Floor A/C	1756 SF
TOTAL A/C	3164 SF
3 Car Garage	671 SF
Lanai	166 SF
Entry	38 SF
Total Area	4039 SF



Mariposa

4 bed • 3 bath • 2 car | 2,289 sq. ft.

WHY NOT START FRESH?



Mariposa A
Color Scheme B19



Mariposa B
Color Scheme B18

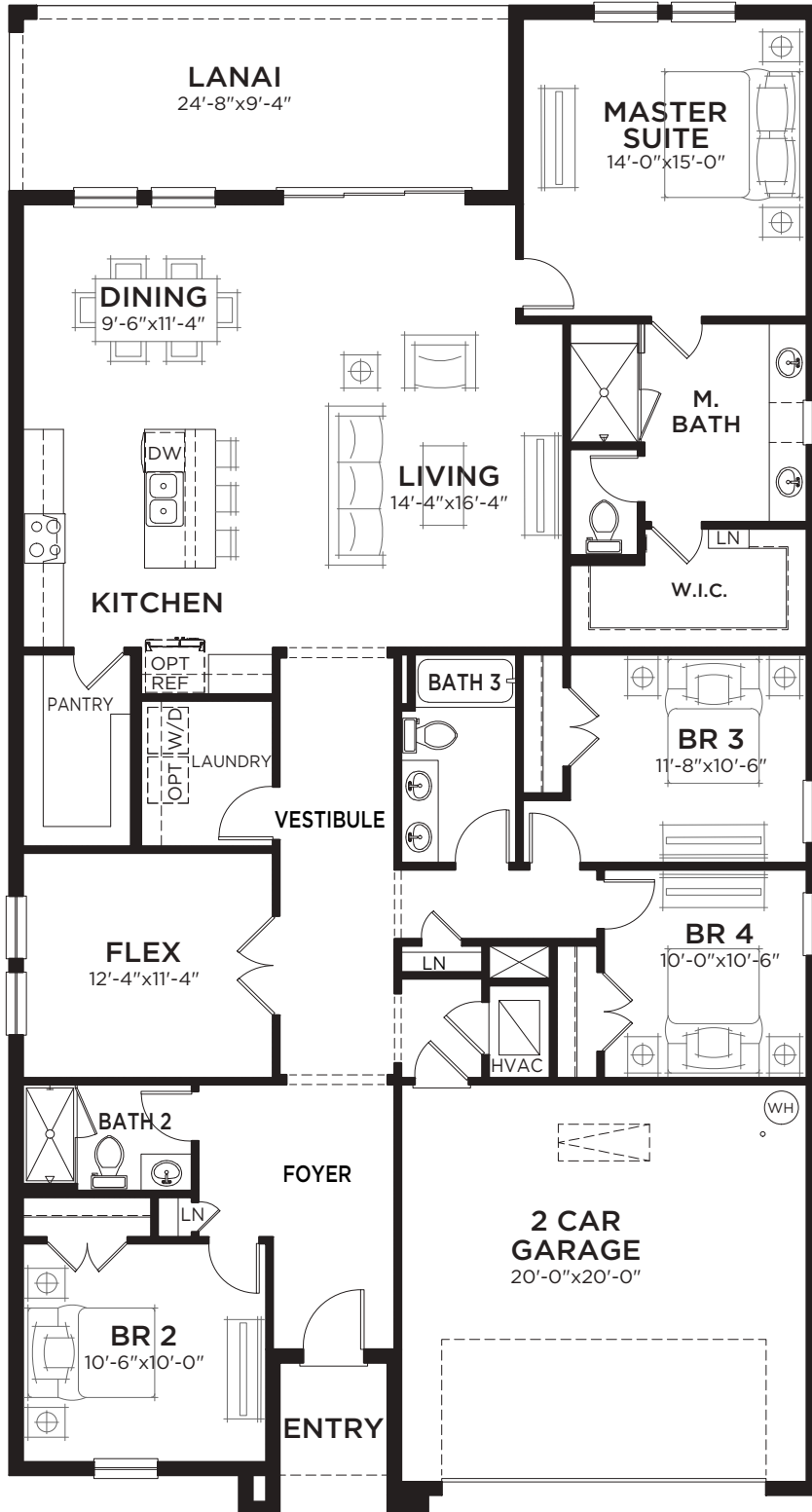


Mariposa C
Color Scheme B08

Mariposa

4 bed • 3 bath • 2 car | 2,289 sq. ft.

WHY NOT START FRESH?



MAIN FLOOR PLAN

Area Schedule

Main Floor A/C	2289 SF
2 Car Garage	432 SF
Lanai	230 SF
Entry	47 SF
Total Area	2998 SF

